



PRICED AT  
**\$1,010,290**

 2105 Sq Ft

 3 Beds

 3.5 Baths

 2 Car Garage

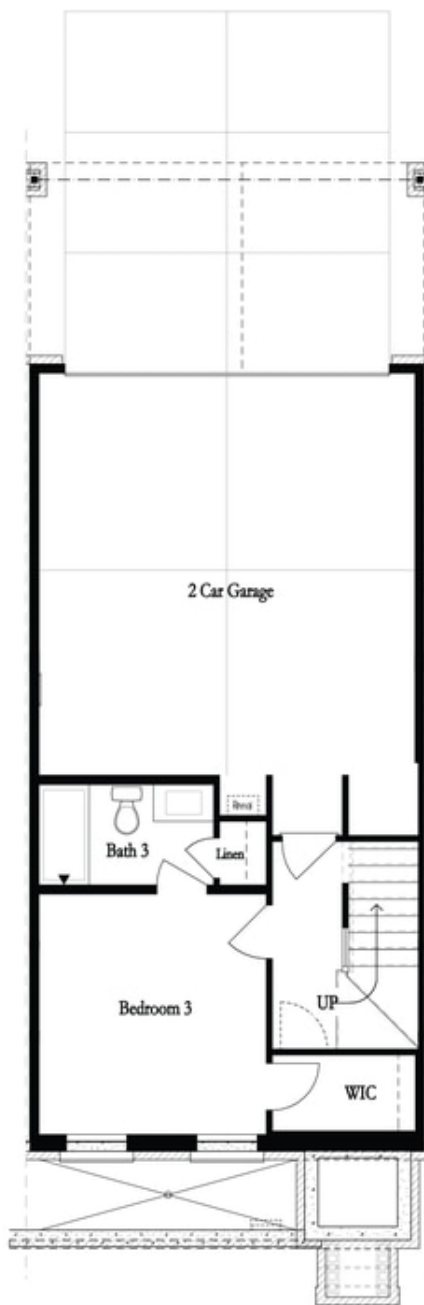
 3.0 Story

Spring into a New Home! END UNIT ~ The Chamberlain Home Design features 3 Bed / 3.5 Bath. Guest welcome to park on Thompson Street as they enter your front stoop to arrive immediately at your open concept main level featuring 10 ft ceilings with additional END UNIT windows. Bright and Open Kitchen with White Perimeter cabinets & Willow Gray Island mindfully situated in the front of home w/ stacked cabinets paired with Quartz Countertop. Dining space separates kitchen from your living room featuring a modern FIREPLACE with TV Bracing, Smart Tubes, Media Outlets, and Wireless Access Points have been installed for easy setup. Additional Sunroom provides ideal Office Space or alternative seating with direct covered deck access. Upper-level features HUGE Owner's Suite + Sitting Room + Private Owner's Deck + Spacious Walk-In Closet! Owner Bath showcases vaulted ceiling with massive walk through shower! Guest Bedroom 2 located opposite of Owner's Wing with great size bedroom & full bath directly connected. 3rd Bedroom is located on Terrace Level featuring walk-in Closet + upgraded walk-in shower. The Chamberlain Plan is built with your life and your fur baby's life in mind. Enjoy discrete hideaway space under the stairs on the Terrace

...

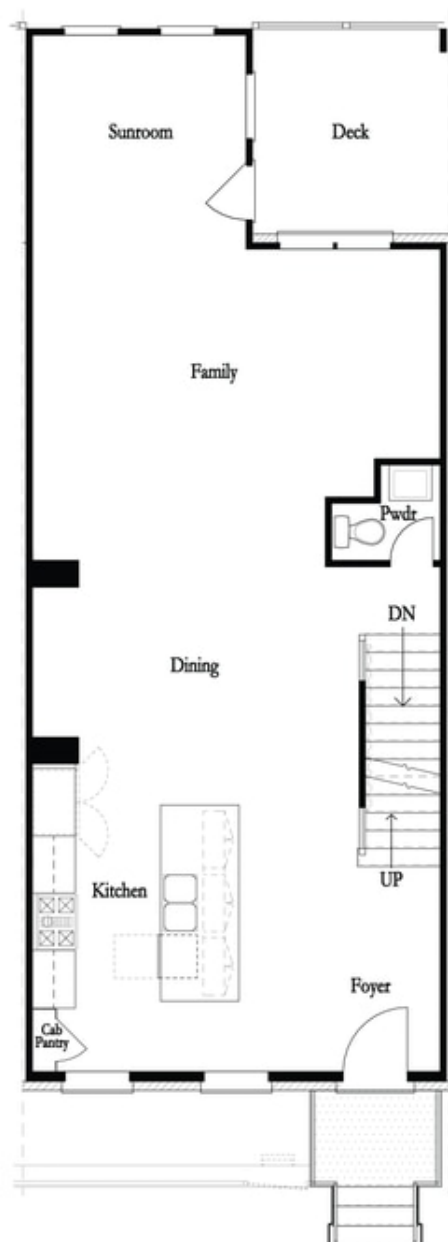
**Want to Know More  
About This Home?**

CONTACT OUR COMMUNITY SALES MANAGER  
Call Us @ 470-248-2777



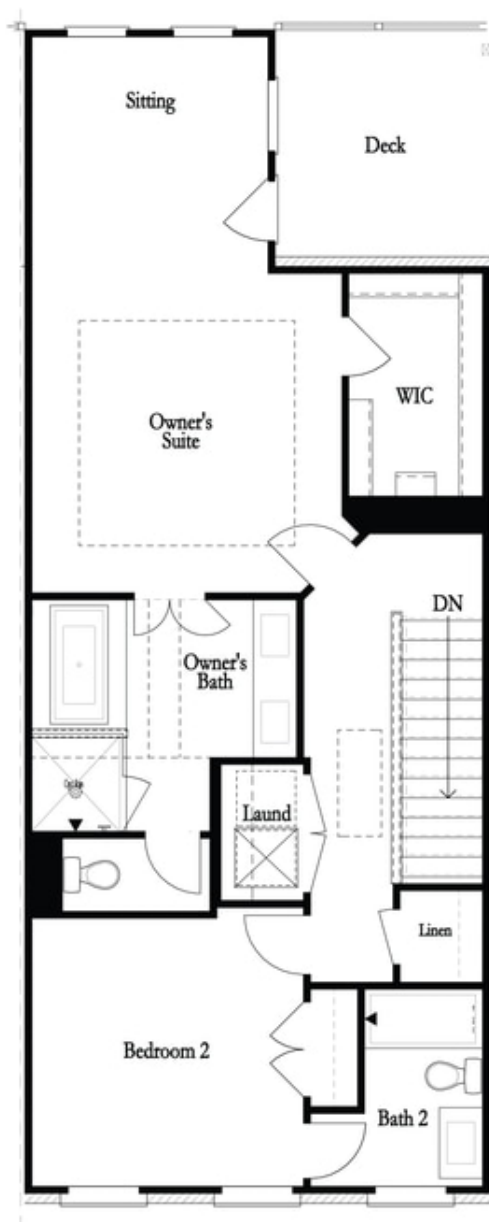
**Want to Know More  
About This Home?**

CONTACT OUR COMMUNITY SALES MANAGER  
Call Us @ 470-248-2777



**Want to Know More  
About This Home?**

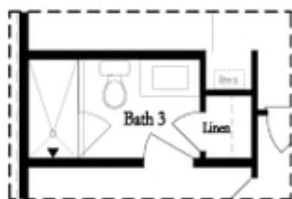
CONTACT OUR COMMUNITY SALES MANAGER  
Call Us @ 470-248-2777



**Want to Know More  
About This Home?**

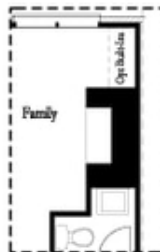
CONTACT OUR COMMUNITY SALES MANAGER  
Call Us @ 470-248-2777

### Optional Layouts

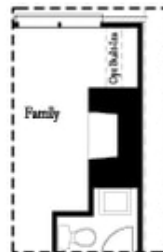


*Opt. Shower*

### First Floor Options



*Opt. Linear Fireplace*

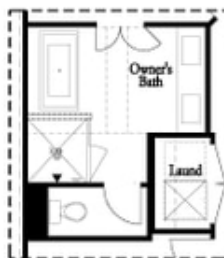


*Opt. Fireplace*

### Second Floor Options



*Opt. Walk-Through Shower*



*Opt. Freestanding Tub/Shower Combo*

### Third Floor Options

**Want to Know More  
About This Home?**

CONTACT OUR COMMUNITY SALES MANAGER  
Call Us @ 470-248-2777