



PRICED FROM  
**\$590,900**

 2,360 - 2,779 Sq Ft

 3 - 5 Beds

 2.5 - 4 Baths

 2 Car Garage

 2.0 - 3.0 Story

- Main Level Study
- Upper Level Owner's Suite with Huge Walk In Closet
- Secondary Bedrooms with Shared Full Bath
- Optional Main Level Guest Retreat
- Optional Third Level Retreat with Bedroom and Full Bath

[Read More Online](#)

## Available Elevations



Elevation A



Elevation B



Elevation C

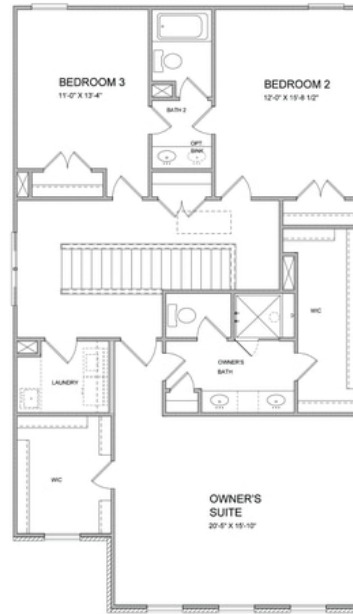


Elevation D

Please refer to actual blueprints for an accurate representation of home design. Home design and elevations subject to change without prior notice. Window, door and porch locations may vary by elevation. Subject to error, omission or withdrawal.



**First Floor**



**Second Floor**

**Want to Know More  
 About This Home?**

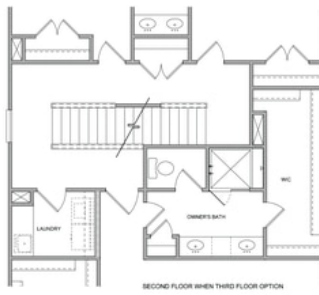
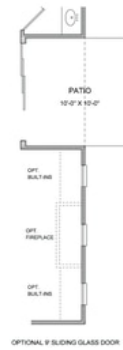
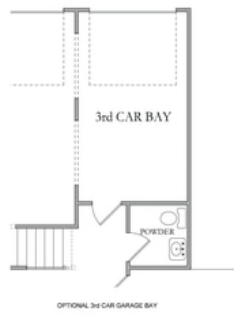
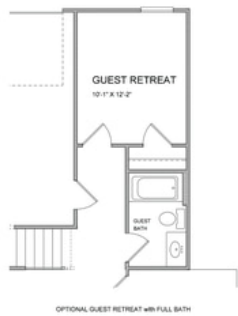
CONTACT OUR COMMUNITY SALES MANAGER  
 Call Us @ 470.509.9930



**Optional Third Floor**

**Want to Know More  
About This Home?**

CONTACT OUR COMMUNITY SALES MANAGER  
Call Us @ 470.509.9930



All Options

Want to Know More  
 About This Home?

CONTACT OUR COMMUNITY SALES MANAGER  
 Call Us @ 470.509.9930