



PRICED AT
\$812,425

 2360 Sq Ft

 4 Beds

 3.0 Baths

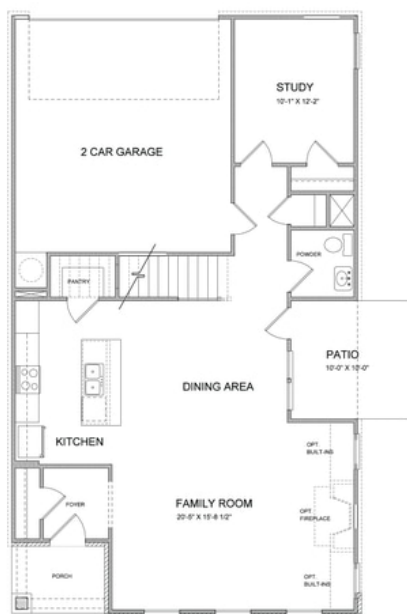
 2 Car Garage

 3.0 Story

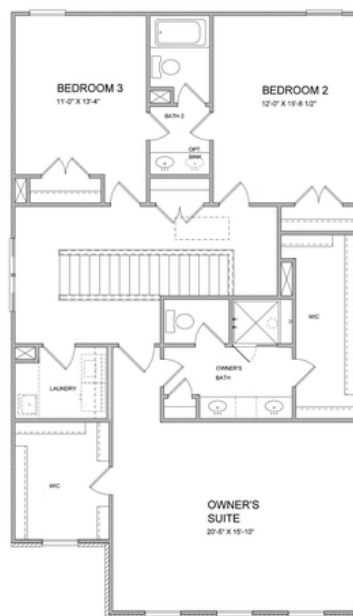
The Tensley C plan is just perfect for you...."SPRING INTO A NEW HOME? " This home is located on a CORNER LOT and will start construction later this month. So don't miss out- This home is TO BE BUILT- Bring your buyers now and they can still select all the Design finishes in this home. The Tensley is one of the Courtyard style homes with a Rear-entry 2 car garage in the Meadowview Collection. This home has a total of 4 BEDROOMS 3 BATHROOMS with an office space located on the second floor. GUEST RETREAT- full bathroom with walk in shower and bedroom is conveniently located on the first floor. Structural additions to the home include: 10-foot ceilings, 8-foot doors and elongated windows that bring in tons of natural light on the main level. Open rail stair/hallway with a designated office space located on 2nd level which can also be used for extra storage. Upstairs Laundry room with upper and lower cabinets and utility sink. Rear entry 2 car garage has an electric car charger outlet to accommodate an electric car. Buyers can still add ALL DESIGN SELECTIONS and create their dream home! Bellmoore Park is an Award-winning Master plan ...

**Want to Know More
About This Home?**

CONTACT OUR COMMUNITY SALES MANAGER
Call Us @ (770) 580-9300



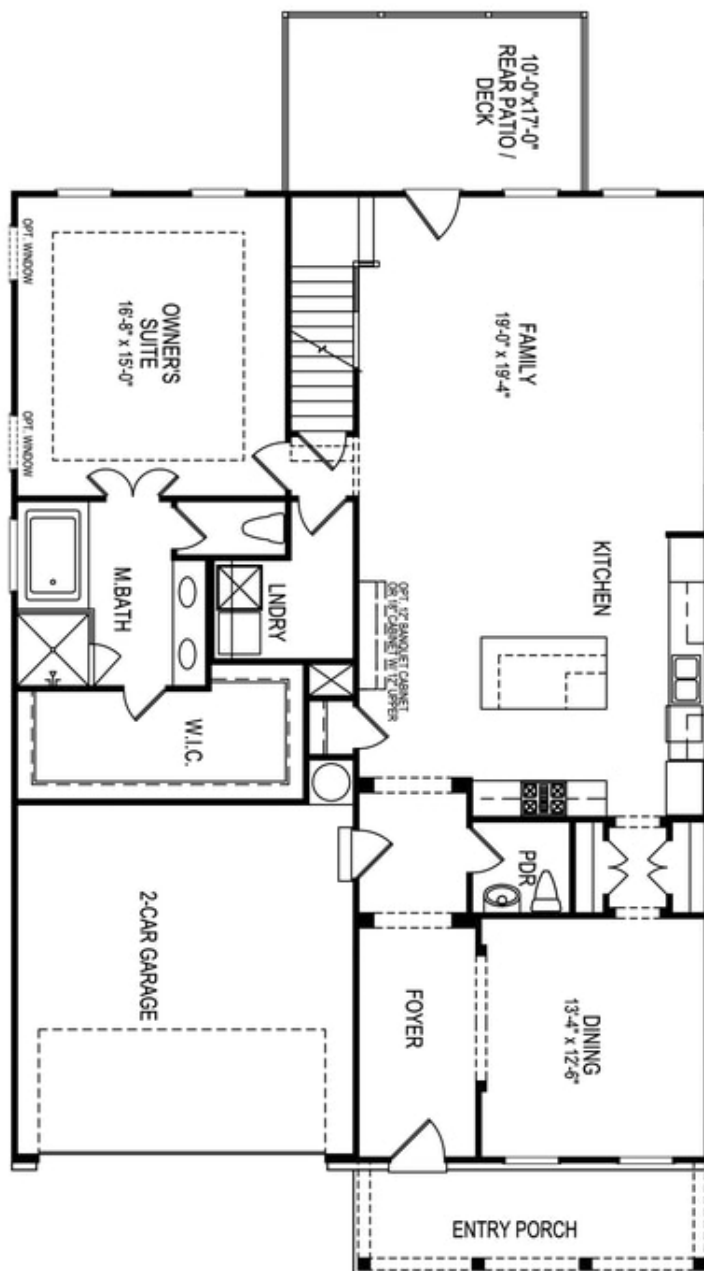
First Floor



Second Floor

Want to Know More
About This Home?

CONTACT OUR COMMUNITY SALES MANAGER
Call Us @ (770) 580-9300



Want to Know More
About This Home?

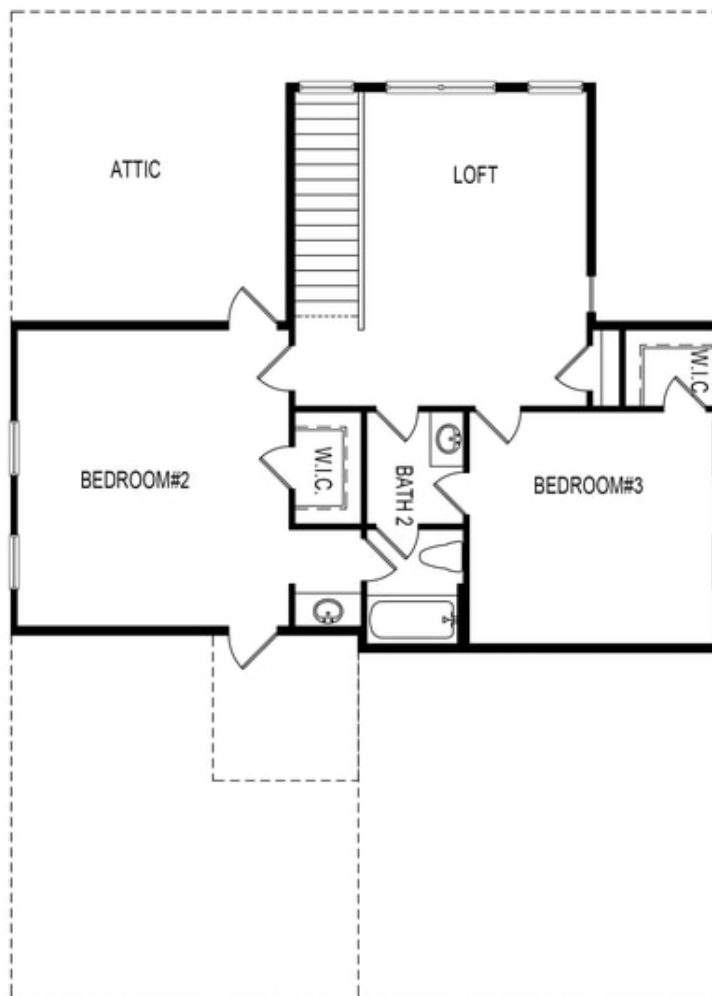
CONTACT OUR COMMUNITY SALES MANAGER
Call Us @ (770) 580-9300



Optional Third Floor

**Want to Know More
About This Home?**

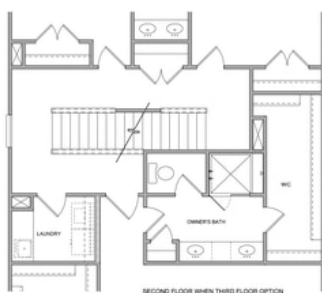
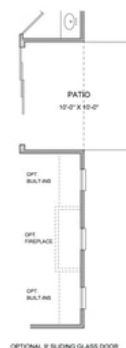
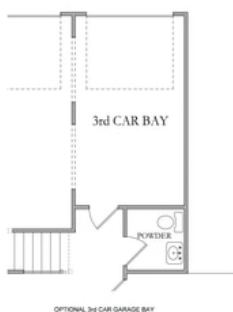
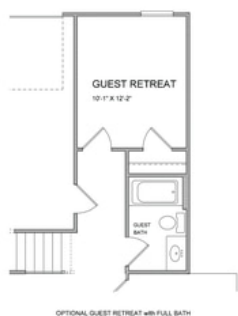
CONTACT OUR COMMUNITY SALES MANAGER
Call Us @ (770) 580-9300



Second Floor

**Want to Know More
About This Home?**

CONTACT OUR COMMUNITY SALES MANAGER
Call Us @ (770) 580-9300

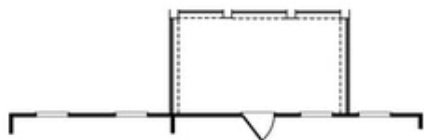


All Options

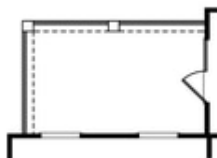
Want to Know More
About This Home?

CONTACT OUR COMMUNITY SALES MANAGER
Call Us @ (770) 580-9300

Options



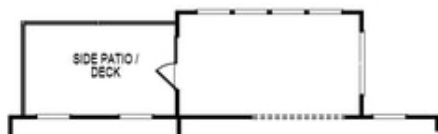
OPT Covered Patio/Deck



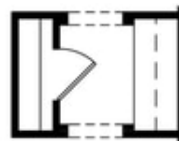
OPT Covered Side Patio/Deck



OPT Fireplace
w. Opt Built-Ins



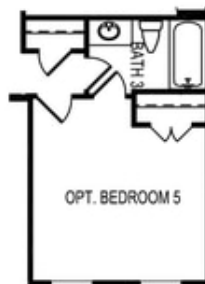
OPT Sunroom



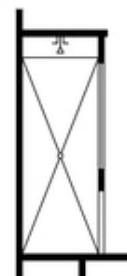
OPT Butler's Pantry



OPT Bedroom 4 ilo Loft



OPT Bedroom 5
ilo Dining Room



OPT Owner's
Walk-In Shower

Want to Know More
About This Home?

CONTACT OUR COMMUNITY SALES MANAGER
Call Us @ (770) 580-9300