



PRICED AT  
**\$868,155**

 2379 Sq Ft

 4 Beds

 3.5 Baths

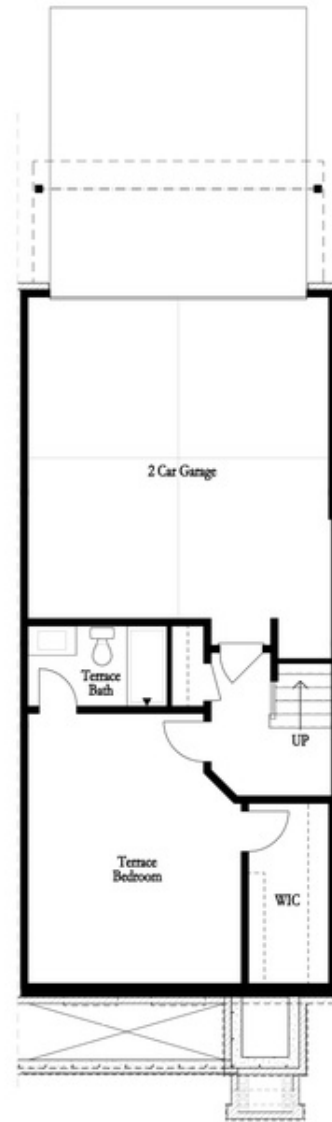
 2 Car Garage

 3.0 Story

Elevate your life in 2023 with a new home by The Providence Group and Be Home for Your Holiday Memories. \*\*\$15,000 to use any way you want for contracts written during October 2023 that close November 2023!\*\*\* MOVE IN READY on this END UNIT! Let's make Alpharetta a place to call home. OPEN CONCEPT LIVING with WHITE DESIGN PALLET on our most PRIVATE HOMESITE AVAILABLE! Fireplace in Family Room for those few cold Georgia nights with beautiful vertical shiplap surround. WASHER/DRYER/FRIDGE/BLINDS INCLUDED! Large bedroom on Terrace Level with huge walk-in-closet and full bath perfect for when guest stay to have privacy. Oversized Owner's Suite is the perfect place to drift off to sleep after a long week. Massive shower in the Owner's Bath to enjoy a spa-like experience. HARDWOODS THROUGHOUT. Two secondary bedrooms in the rear of the home can both access the 2nd deck and enjoy some sunshine or gaze at the night stars. Tons of windows letting in lots of natural light. Our tree-lined Atley gated community in Downtown Alpharetta offers a pool, neighborhood garden, dog park and Alpha Loop running right through to get to all the great places Alpharetta has to offer. Walking distance to all ...

Want to Know More  
About This Home?

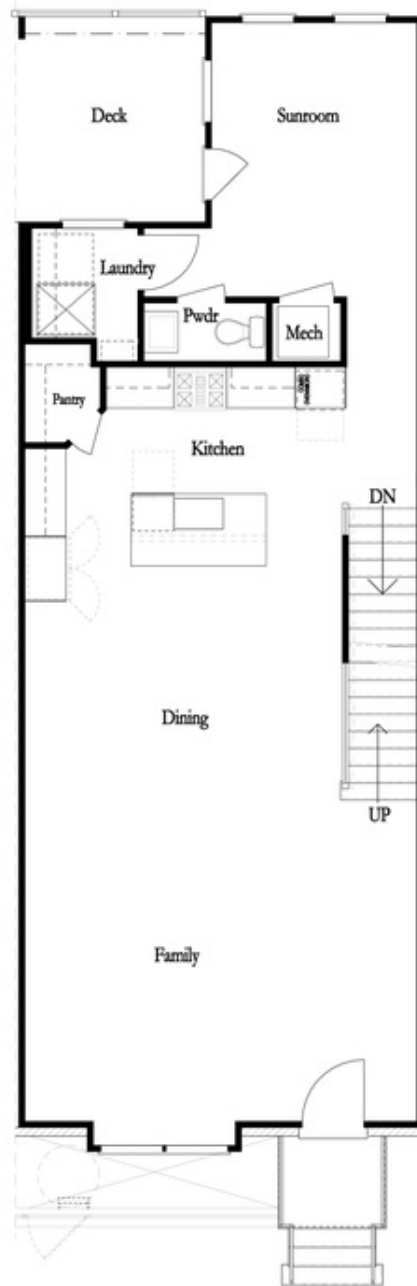
CONTACT OUR COMMUNITY SALES MANAGER  
Call Us @ 470.436.2641



First Floor

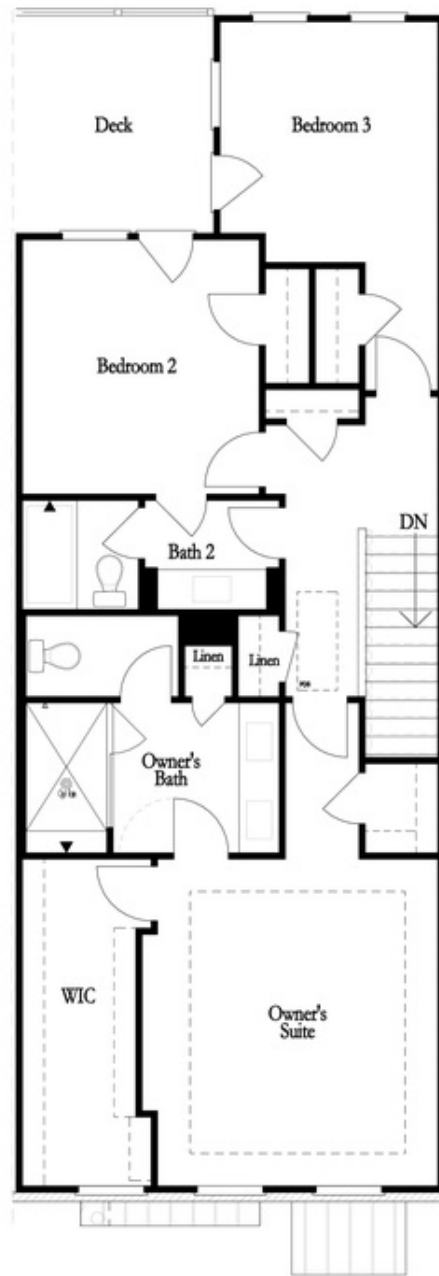
Want to Know More  
About This Home?

CONTACT OUR COMMUNITY SALES MANAGER  
Call Us @ 470.436.2641



Want to Know More  
About This Home?

CONTACT OUR COMMUNITY SALES MANAGER  
Call Us @ 470.436.2641



Want to Know More  
About This Home?

CONTACT OUR COMMUNITY SALES MANAGER  
Call Us @ 470.436.2641

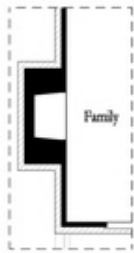


Left End  
Opt. Sprinkler Room

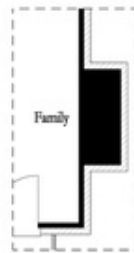


Right End  
Opt. Sprinkler Room

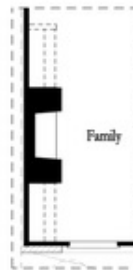
First Floor Options



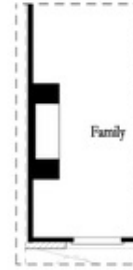
Opt. Exterior Fireplace



Opt. Faux Exterior  
Fireplace



Opt. Fireplace



Opt. Linear Fireplace

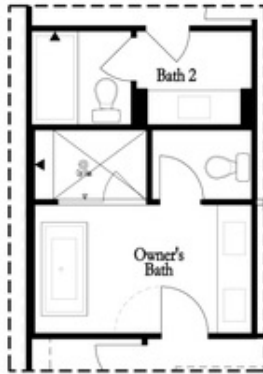
Second Floor Options

Want to Know More  
About This Home?

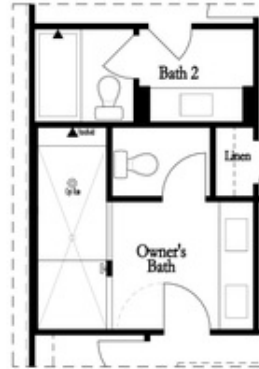
CONTACT OUR COMMUNITY SALES MANAGER  
Call Us @ 470.436.2641

Options

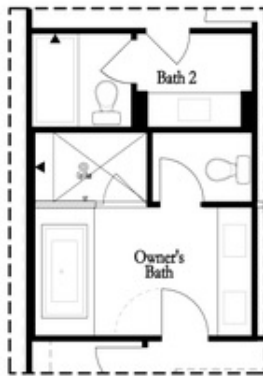
Third Floor Options



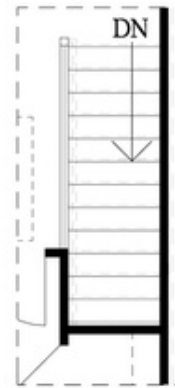
Opt. Freestanding  
 Tub/Shower Combo



Opt. Walk-Through Shower



Opt. Decked  
 Tub/Shower Combo



Opt. Open Rail

Want to Know More  
 About This Home?

CONTACT OUR COMMUNITY SALES MANAGER  
 Call Us @ 470.436.2641