



PRICED AT  
**\$868,155**

 2163 Sq Ft

 4 Beds

 3.5 Baths

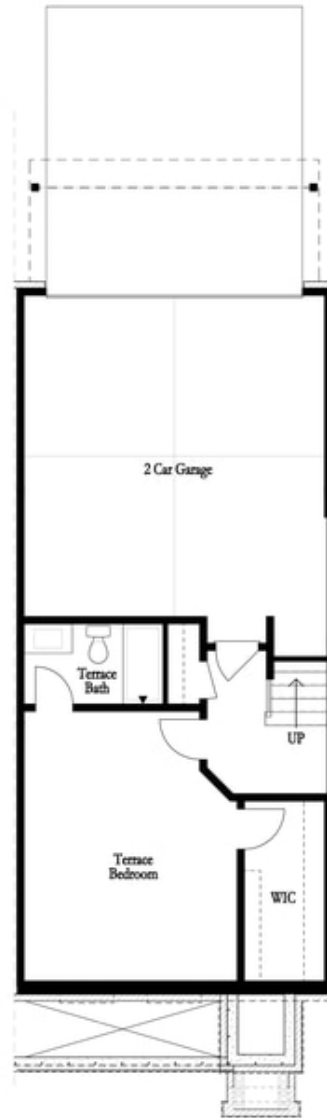
 2 Car Garage

 3.0 Story

Elevate your life in 2023 with a new home by The Providence Group and \$5,000 towards closing cost! **MOVE IN READY** on this **END UNIT!** Let's make Alpharetta a place to call home. **OPEN CONCEPT LIVING** with 10' ceilings, walk-in pantry, sunroom that has access to the deck off the rear. **WHITE DESIGN PALLET!** Fireplace in Family Room for those few cold Georgia nights with beautiful vertical shiplap surround. **WASHER/DRYER/FRIDGE/BLINDS INCLUDED!** Large bedroom on Terrace Level with huge walk-in-closet and full bath. 3rd floor features oversized Owner's Suite in the front w/large walk-in closet. Massive shower in the Owner's Bath. **HARDWOODS THROUGHOUT.** Two secondary bedrooms in the rear of the home can both access the 2nd deck and enjoy some sunshine! Tons of windows letting in lots of natural light. 3-Story Brick Exterior and stone water table with 2-car garage and driveway long enough for 2 more cars. Front door entry on main level. Front fenced in landscaped yard HOA maintained for some privacy too. Our tree-lined Atley gated community in Downtown Alpharetta offers a pool, neighborhood garden, dog park and Alpha Loop running right through to get to all the great places Alpharetta has to offer. Walking distance to ...

**Want to Know More  
About This Home?**

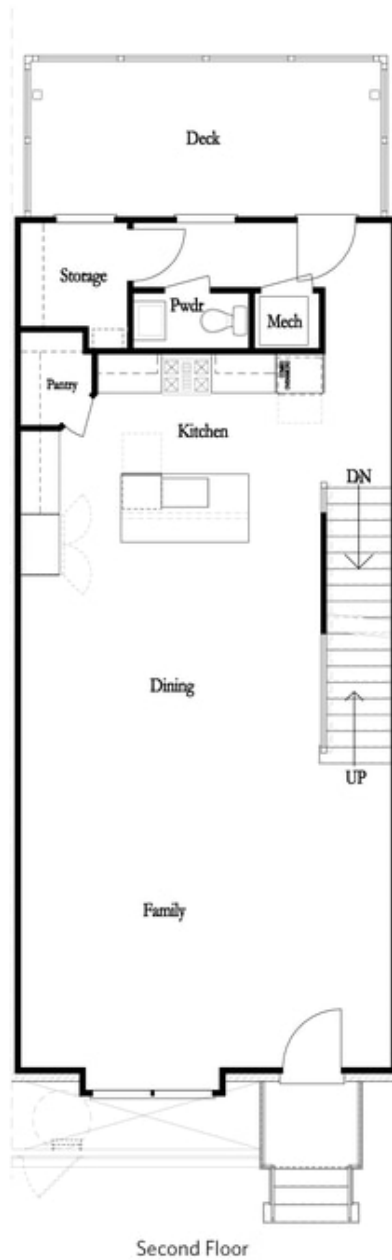
CONTACT OUR NEW HOME NAVIGATOR  
Call Us @ 470.436.2641



First Floor

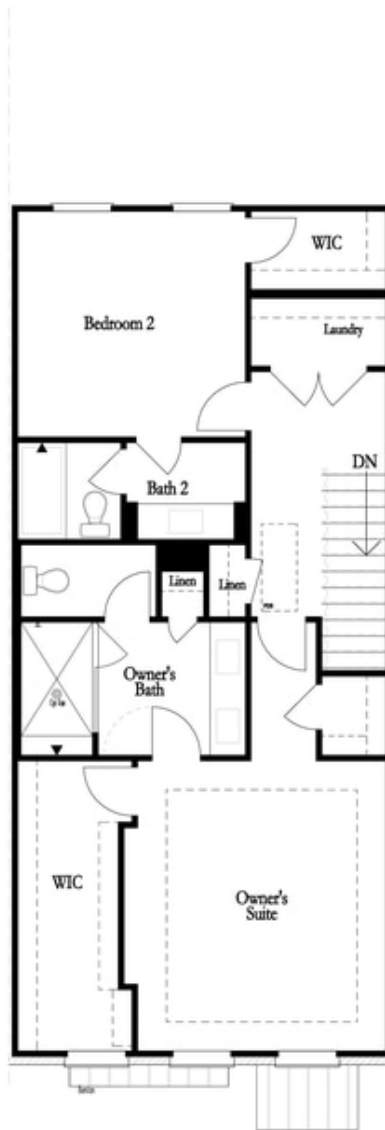
**Want to Know More  
About This Home?**

CONTACT OUR NEW HOME NAVIGATOR  
Call Us @ 470.436.2641



**Want to Know More  
About This Home?**

CONTACT OUR NEW HOME NAVIGATOR  
Call Us @ 470.436.2641



Third Floor

**Want to Know More  
About This Home?**

CONTACT OUR NEW HOME NAVIGATOR  
Call Us @ 470.436.2641

First Floor Options



*Left End  
 Opt. Sprinkler Room*



*Right End  
 Opt. Sprinkler Room*

Second Floor Options



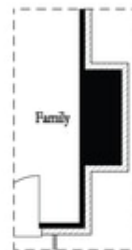
*Included Sunroom*



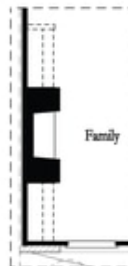
*Laundry with Included Bedroom 3*



*Opt. Exterior Fireplace*



*Opt. Faux Exterior Fireplace*



*Opt. Fireplace*



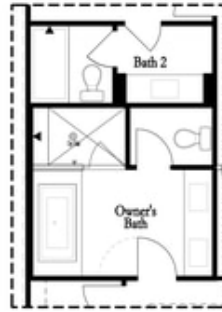
*Opt. Linear Fireplace*

**Want to Know More  
 About This Home?**

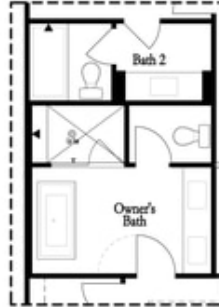
CONTACT OUR NEW HOME NAVIGATOR  
 Call Us @ 470.436.2641

Options

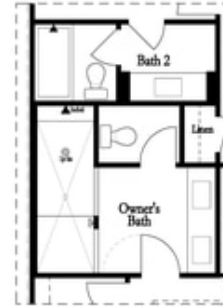
Third Floor Options



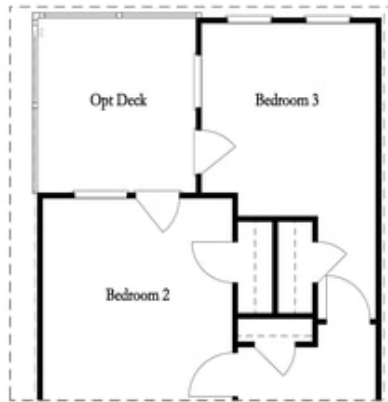
Opt. Decked  
 Tub/Shower Combo



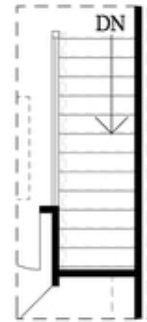
Opt. Freestanding  
 Tub/Shower Combo



Opt. Walk-Through Shower



Included Bedroom 3



Opt. Open Rail

**Want to Know More  
 About This Home?**

CONTACT OUR NEW HOME NAVIGATOR  
 Call Us @ 470.436.2641