



PRICED AT  
**\$835,811**

 2163 Sq Ft

 4 Beds

 3.5 Baths

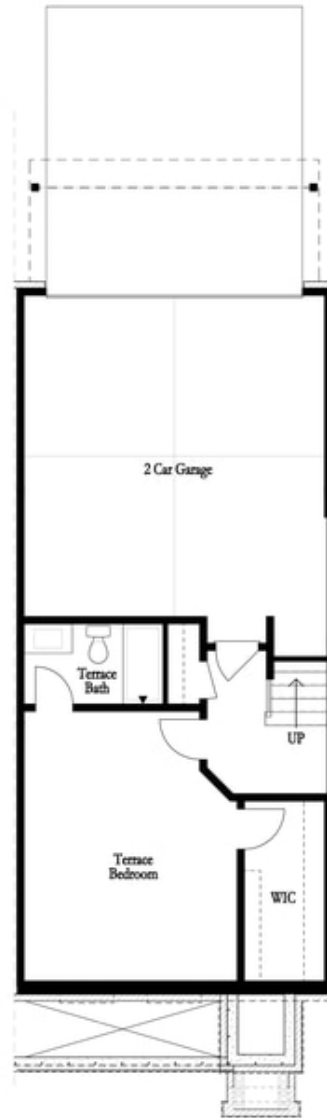
 2 Car Garage

 3.0 Story

Elevate your life in 2023 with a new home by The Providence Group and \$5,000 towards closing cost! **QUICK MOVE IN!!** This home is **FABULOUS** and has **AWESOME UPGRADES!** Our tree-lined Atley gated community in Downtown Alpharetta offers a pool, neighborhood garden, dog park and Alpha Loop running right through to get to all the great places Alpharetta has to offer. Walking distance to all the great hotspots in Downtown Alpharetta including Avalon and Maxwell Retail. Large bedroom on Terrace Level with an unexpected huge walk-in-closet and full bath. Great for guest to enjoy privacy, office or secondary bedroom. **OPEN CONCEPT LIVING**, walk-in pantry and sunroom that leads to the deck off the rear for some fresh air on those beautiful spring days. **WHITE AND NAVY DESIGN FEATURES** throughout and **BRUSHED GOLD HARDWARE** add a beautiful touch. The family room fireplace offers **SHIPLAP Surround** making it a fun entertaining focal point. The 3rd floor features an oversized Owner's Suite w/large walk-in closet. Sweet little deck off the Owner's Suite too! **SO MUCH OUTDOOR SPACE!** The spa like owners bath has a large shower offering 3 plumbing fixtures, and double vanity. **HARDWOODS THROUGHOUT.** Two bedrooms in the rear of the home ...

**Want to Know More  
About This Home?**

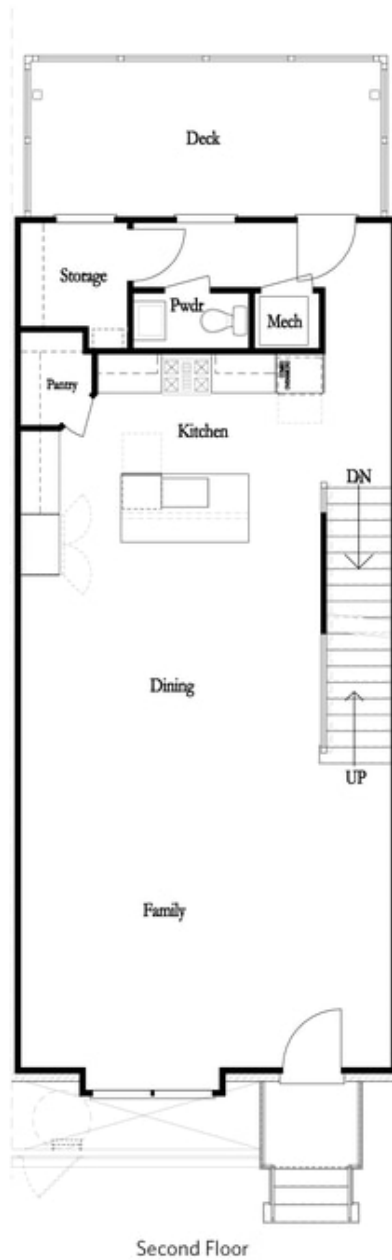
CONTACT OUR NEW HOME NAVIGATOR  
Call Us @ 470.436.2641



First Floor

**Want to Know More  
About This Home?**

CONTACT OUR NEW HOME NAVIGATOR  
Call Us @ 470.436.2641



**Want to Know More  
About This Home?**

CONTACT OUR NEW HOME NAVIGATOR  
Call Us @ 470.436.2641



Third Floor

**Want to Know More  
About This Home?**

CONTACT OUR NEW HOME NAVIGATOR  
Call Us @ 470.436.2641

First Floor Options



*Left End  
 Opt. Sprinkler Room*



*Right End  
 Opt. Sprinkler Room*

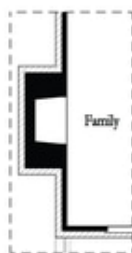
Second Floor Options



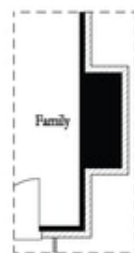
*Included Sunroom*



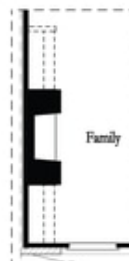
*Laundry with Included Bedroom 3*



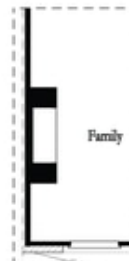
*Opt. Exterior Fireplace*



*Opt. Faux Exterior Fireplace*



*Opt. Fireplace*



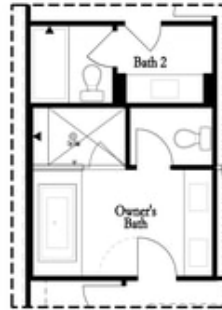
*Opt. Linear Fireplace*

**Want to Know More  
 About This Home?**

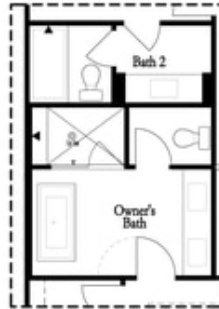
CONTACT OUR NEW HOME NAVIGATOR  
 Call Us @ 470.436.2641

Options

Third Floor Options



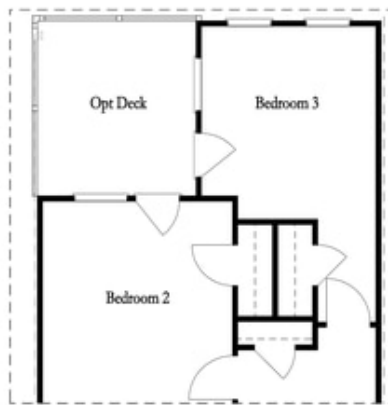
Opt. Decked  
 Tub/Shower Combo



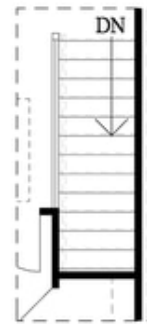
Opt. Freestanding  
 Tub/Shower Combo



Opt. Walk-Through Shower



Included Bedroom 3



Opt. Open Rail

**Want to Know More  
 About This Home?**

CONTACT OUR NEW HOME NAVIGATOR  
 Call Us @ 470.436.2641