



PRICED AT
\$850,090

 2379 Sq Ft

 4 Beds

 3.5 Baths

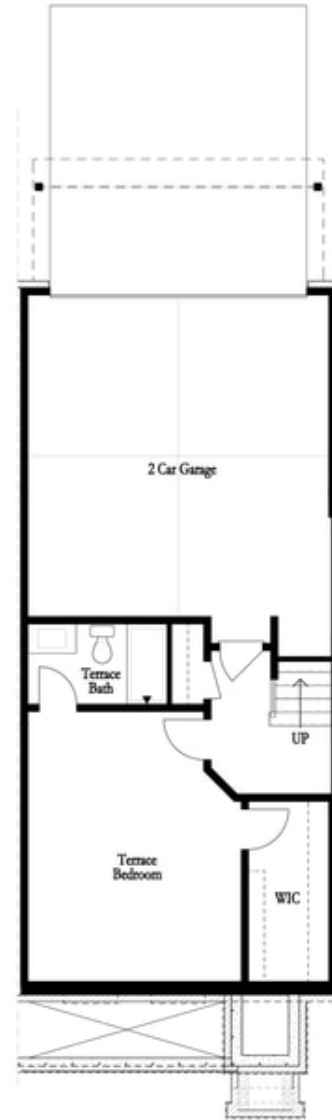
 2 Car Garage

 3.0 Story

Elevate your life in 2023 with a new home by The Providence Group and Be Home for Your Holiday Memories. **\$15,000 to use ANY WAY YOU WANT for contracts closing prior to 12/21/23 using one of our 5-Preferred Lenders** MOVE IN READY!!! This home is FABULOUS and has AWESOME UPGRADES! Wake up and hop onto the ALPHA LOOP that runs right through this gated community offering a pool, dog park and neighborhood garden and walk to all the hotspots Alpharetta has to offer. This home is perfect to Zen out in and have the city just steps from your front door. SOFT GRAY AND WHITE DESIGN running through the home allowing your personality to shine through when you furnish. HARDWOODS THROUGHOUT and BRUSHED GOLD HARDWARE/PLUMBING adds a nice richness. Family room fireplace has gorgeous VERTICAL SHIPLAP Surround making it a fun focal point. Two bedrooms in the rear of the home can both access the 2nd deck and enjoy some sunshine! Tons of windows throughout letting in lots of natural light. Terrace level has a 4th bedroom w/private bath and LARGE WALK IN CLOSET. 2-car garage and 2-car driveway. Front door entry on main level. Front fenced in landscaped yard ...

**Want to Know More
About This Home?**

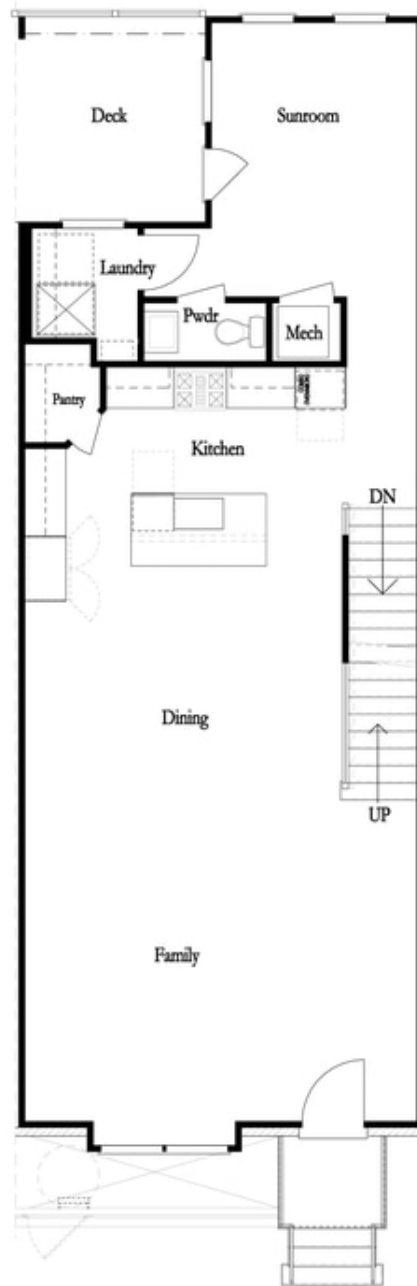
CONTACT OUR COMMUNITY SALES MANAGER
Call Us @ 470.436.2641



First Floor

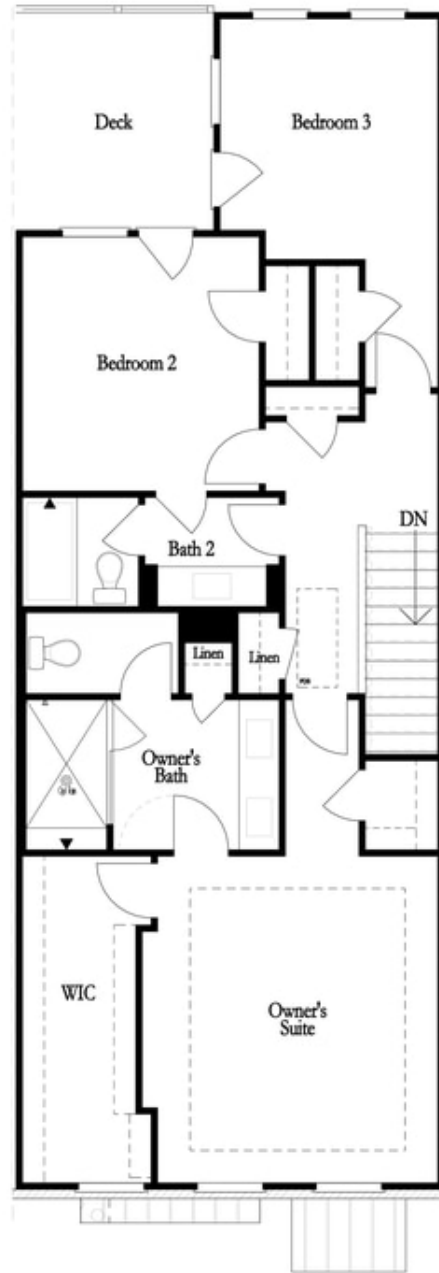
**Want to Know More
About This Home?**

CONTACT OUR COMMUNITY SALES MANAGER
Call Us @ 470.436.2641



**Want to Know More
About This Home?**

CONTACT OUR COMMUNITY SALES MANAGER
Call Us @ 470.436.2641



**Want to Know More
About This Home?**

CONTACT OUR COMMUNITY SALES MANAGER
Call Us @ 470.436.2641

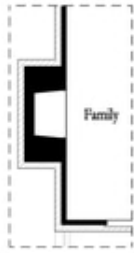


Left End
Opt. Sprinkler Room

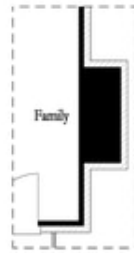


Right End
Opt. Sprinkler Room

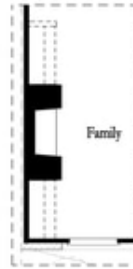
First Floor Options



Opt. Exterior Fireplace



Opt. Faux Exterior
Fireplace



Opt. Fireplace



Opt. Linear Fireplace

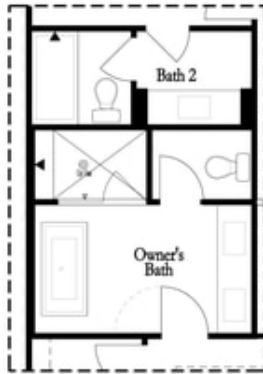
Second Floor Options

**Want to Know More
About This Home?**

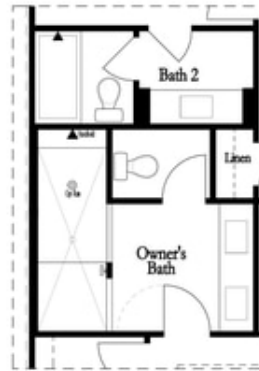
CONTACT OUR COMMUNITY SALES MANAGER
Call Us @ 470.436.2641

Options

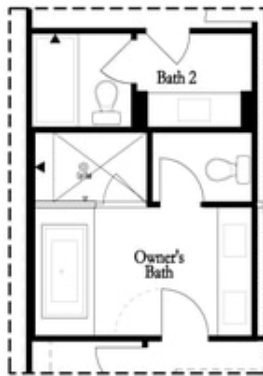
Third Floor Options



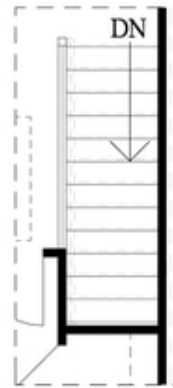
Opt. Freestanding
Tub/Shower Combo



Opt. Walk-Through Shower



Opt. Decked
Tub/Shower Combo



Opt. Open Rail

Want to Know More
About This Home?

CONTACT OUR COMMUNITY SALES MANAGER
Call Us @ 470.436.2641