



PRICED AT  
**\$828,250**

 2163 Sq Ft

 4 Beds

 3.5 Baths

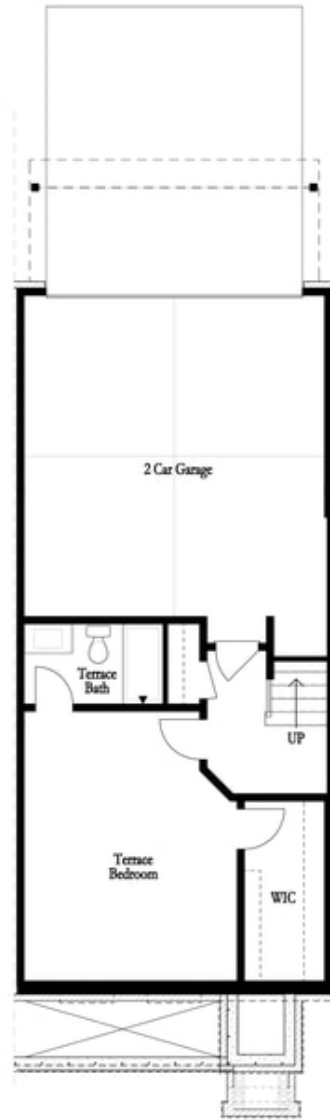
 2 Car Garage

 3.0 Story

Elevate your life in 2023 with a new home by The Providence Group and \$5,000 towards closing cost! **QUICK MOVE IN!!** This home is **FABULOUS** and has **AWESOME UPGRADES!** Wake up and hop onto the **ALPHA LOOP** that runs right through this gated community offering a pool, dog park and neighborhood garden and walk to all the hotspots Alpharetta has to offer. This home is perfect to zen out in and have the city just steps from your front door. **SOFT GRAY AND WHITE DESIGN** running through the home allowing your personality to shine through when you furnish. **HARDWOODS THROUGHOUT** and **BRUSHED GOLD HARDWARE/PLUMBING** adds a nice richness. The Family room fireplace has gorgeous **VERTICAL SHIPLAP Surround** making it a fun focal point. Two bedrooms in the rear of the home can both access the 2nd deck and enjoy some sunshine! Tons of windows throughout letting in lots of natural light. The terrace level has a 4th bedroom with a private bath and a **LARGE WALK IN CLOSET**. This home even has extra storage for all your goodies. 3-Story Brick Exterior and stone water table with 2-car garage and driveway long enough for 2 more cars. Front door entry on ...

**Want to Know More  
About This Home?**

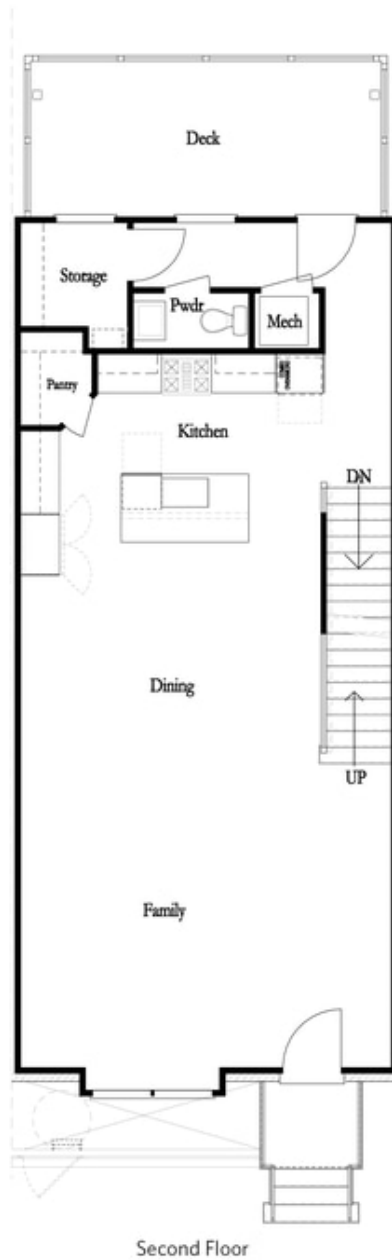
CONTACT OUR NEW HOME NAVIGATOR  
Call Us @ 470.436.2641



First Floor

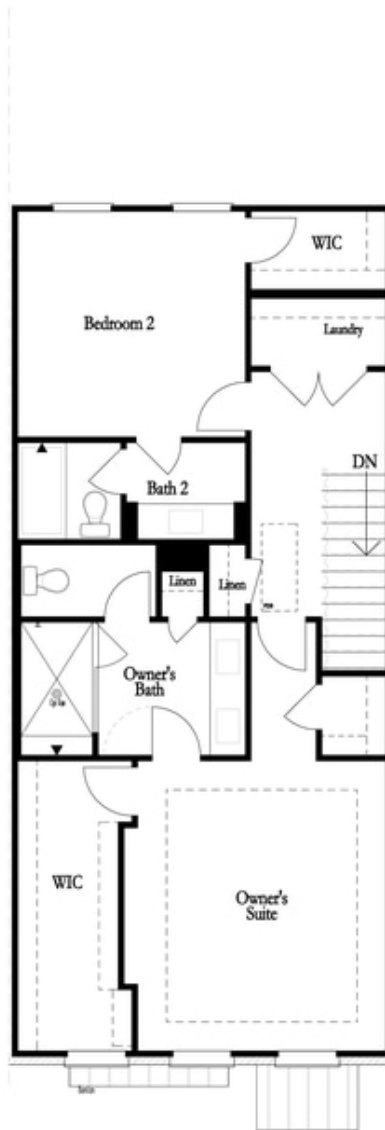
**Want to Know More  
About This Home?**

CONTACT OUR NEW HOME NAVIGATOR  
Call Us @ 470.436.2641



**Want to Know More  
About This Home?**

CONTACT OUR NEW HOME NAVIGATOR  
Call Us @ 470.436.2641



Third Floor

Want to Know More  
About This Home?

CONTACT OUR NEW HOME NAVIGATOR  
Call Us @ 470.436.2641

First Floor Options



*Left End  
 Opt. Sprinkler Room*



*Right End  
 Opt. Sprinkler Room*

Second Floor Options



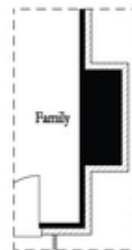
*Included Sunroom*



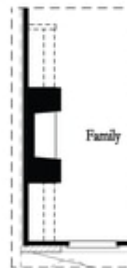
*Laundry with Included Bedroom 3*



*Opt. Exterior Fireplace*



*Opt. Faux Exterior Fireplace*



*Opt. Fireplace*



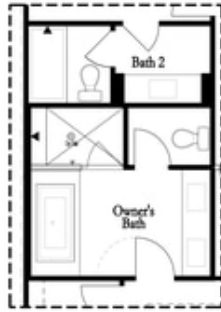
*Opt. Linear Fireplace*

**Want to Know More  
 About This Home?**

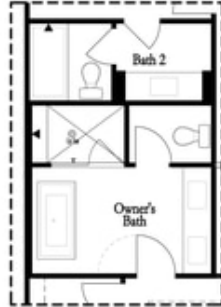
CONTACT OUR NEW HOME NAVIGATOR  
 Call Us @ 470.436.2641

Options

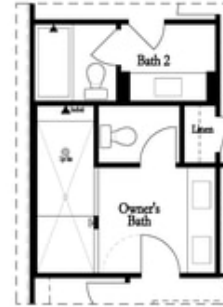
Third Floor Options



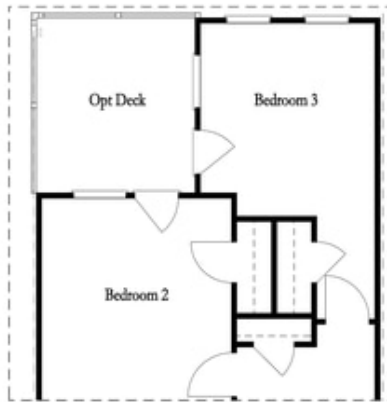
Opt. Decked  
 Tub/Shower Combo



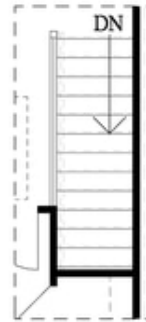
Opt. Freestanding  
 Tub/Shower Combo



Opt. Walk-Through Shower



Included Bedroom 3



Opt. Open Rail

**Want to Know More  
 About This Home?**

CONTACT OUR NEW HOME NAVIGATOR  
 Call Us @ 470.436.2641