



PRICED AT  
**\$784,770**

 2379 Sq Ft

 4 Beds

 3.5 Baths

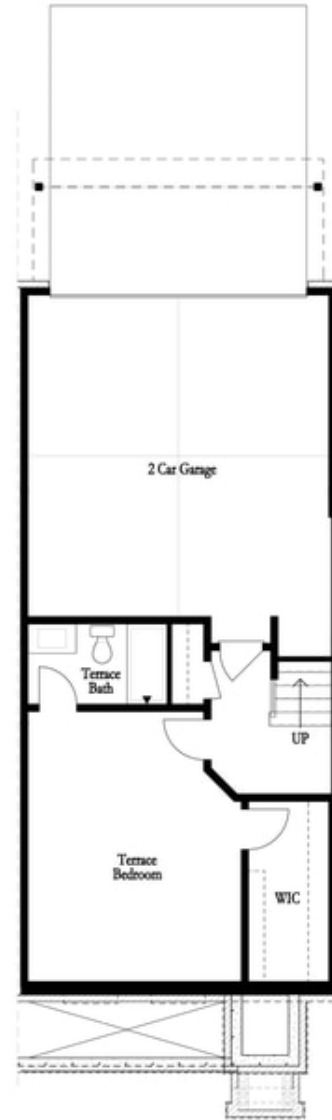
 2 Car Garage

 3.0 Story

**AWESOME UPGRADES! Elevate your Life! \$10k in closing costs with one of our Preferred Lenders. Brand new Atley floorplan you'll love! Walking distance to all the great hotspots in Downtown Alpharetta including Avalon and Maxwell Retail. Our tree-lined Atley gated community in Downtown Alpharetta offers a pool, neighborhood garden, dog park and Alpha Loop running right through to get to all the great places Alpharetta has to offer. Large bedroom on Terrace Level with huge walk-in-closet and full bath. Great for guest, office or secondary bedroom. OPEN CONCEPT LIVING on the main floor with 10' ceilings, walk-in pantry, sunroom that has access to the deck off the rear. Kitchen has all White cabinets with Willow Gray island along with Cambria Luxury Countertops. Satin Nickel hardware on cabinets and Plumbing Fixtures. Fireplace in Family Room for those few cold Georgia nights with beautiful painted white brick surround. 3rd floor features oversized Owner's Suite in the front w/large walk-in closet. Large shower offering 3 plumbing fixtures with double vanity in Owner's Bath. HARDWOODS THROUGHOUT. Two bedrooms in the rear of the home can both access the 2nd deck and enjoy some sunshine! Tons of windows throughout letting in lots of natural light. ...**

**Want to Know More  
About This Home?**

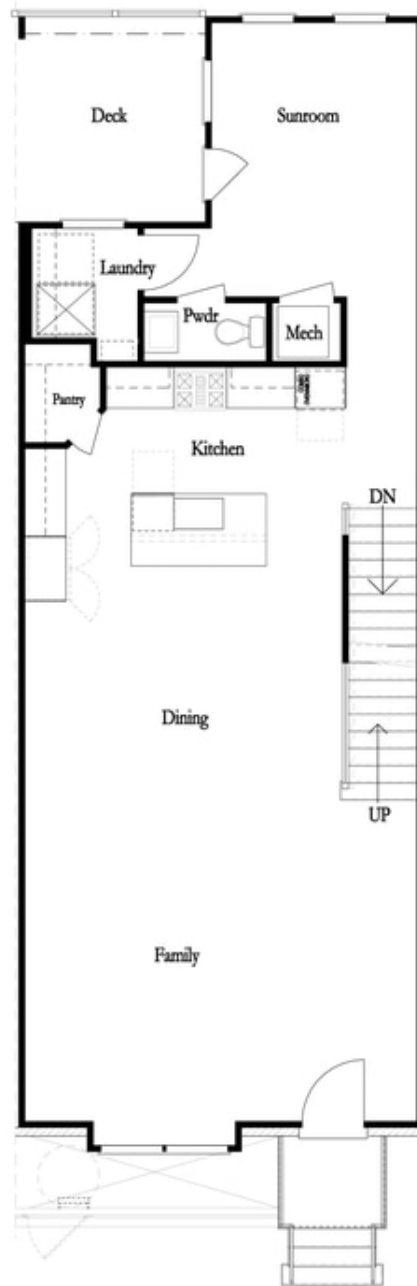
CONTACT OUR COMMUNITY SALES MANAGER  
Call Us @ 470.436.2641



First Floor

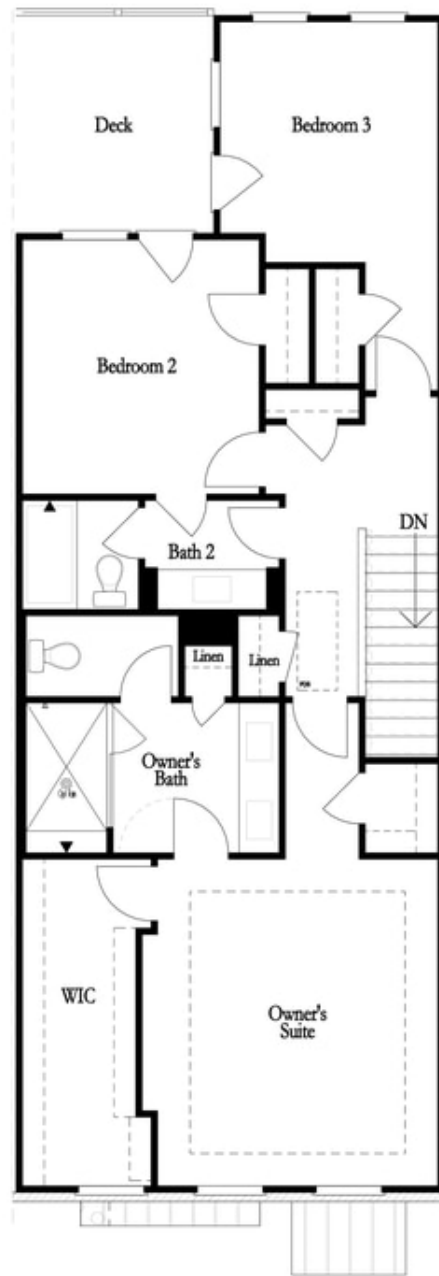
**Want to Know More  
About This Home?**

CONTACT OUR COMMUNITY SALES MANAGER  
Call Us @ 470.436.2641



**Want to Know More  
About This Home?**

CONTACT OUR COMMUNITY SALES MANAGER  
Call Us @ 470.436.2641



**Want to Know More  
About This Home?**

CONTACT OUR COMMUNITY SALES MANAGER  
Call Us @ 470.436.2641

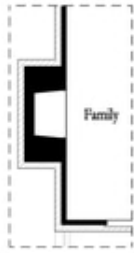


Left End  
Opt. Sprinkler Room

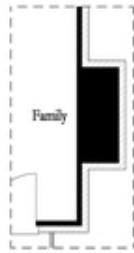


Right End  
Opt. Sprinkler Room

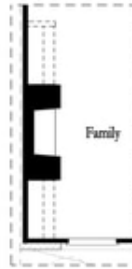
First Floor Options



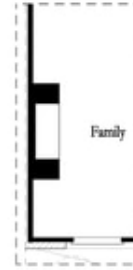
Opt. Exterior Fireplace



Opt. Faux Exterior  
Fireplace



Opt. Fireplace



Opt. Linear Fireplace

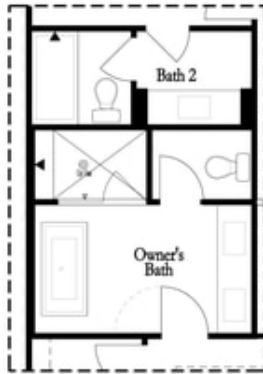
Second Floor Options

**Want to Know More  
About This Home?**

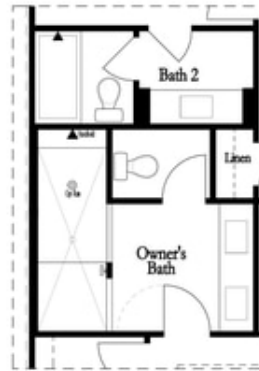
CONTACT OUR COMMUNITY SALES MANAGER  
Call Us @ 470.436.2641

Options

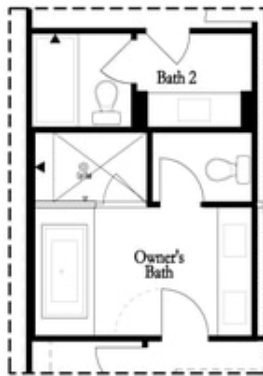
Third Floor Options



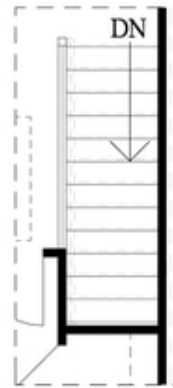
Opt. Freestanding  
 Tub/Shower Combo



Opt. Walk-Through Shower



Opt. Decked  
 Tub/Shower Combo



Opt. Open Rail

**Want to Know More  
 About This Home?**

CONTACT OUR COMMUNITY SALES MANAGER  
 Call Us @ 470.436.2641