



PRICED AT
\$837,670

 2379 Sq Ft

 4 Beds

 3.5 Baths

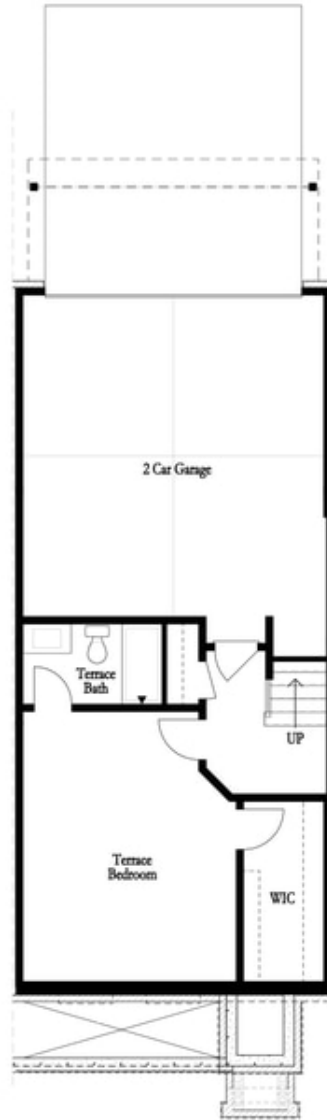
 2 Car Garage

 3.0 Story

Elevate your life in 2023 with a new home by The Providence Group **\$15,000 Towards Closing Cost for Closings by 9/30 with any one of Seller's 5-Preferred Lenders** MOVE IN READY! Come make Alpharetta a place to call home! OPEN CONCEPT LIVING offering an ALL WHITE DESIGN PALLET allowing for your personality to shine. BLACK MATTE HARDWARE with lighting fixtures that are a mix of black and satin bronze creating a more modern atmosphere. Family Room fireplace has gorgeous VERTICAL IRON ORE SHIPLAP Surround. 3rd floor features an oversized Owner's Suite w/large walk-in closet. Spa like Owner's Bath offers a FREE STANDING TUB too! Two bedrooms in the rear can both access the 2nd deck and enjoy some sunshine! The terrace level has a 4th bedroom with a private bath. HARDWOODS THROUGHOUT. 3-Story Brick Exterior with 2-car garage and 2-car driveway. Front fenced in landscaped yard HOA maintained. Our tree-lined Atley gated community in Downtown Alpharetta offers a pool, neighborhood garden, dog park and Alpha Loop running right through to hop on and get your day started. 1-2-8 Warranty.

**Want to Know More
About This Home?**

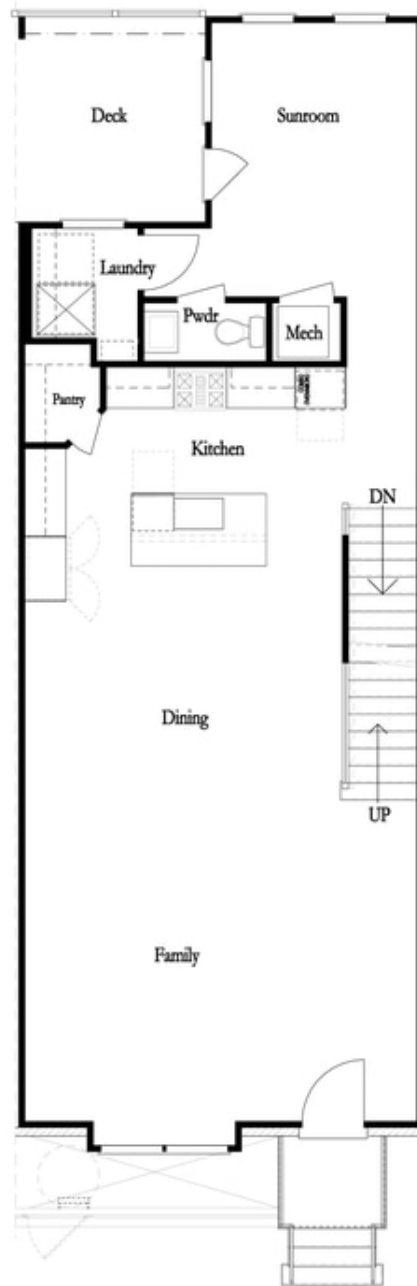
CONTACT OUR COMMUNITY SALES MANAGER
Call Us @ 470.436.2641



First Floor

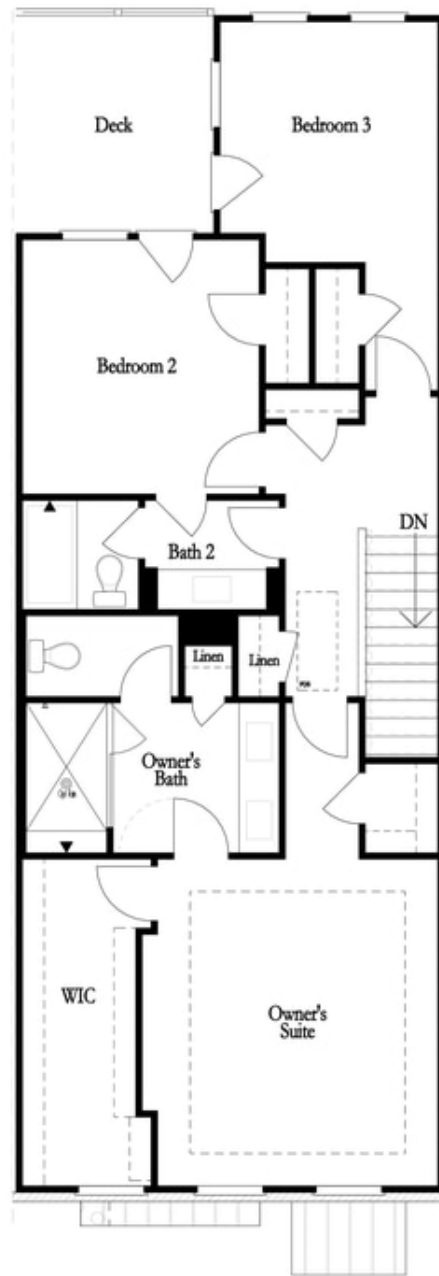
**Want to Know More
About This Home?**

CONTACT OUR COMMUNITY SALES MANAGER
Call Us @ 470.436.2641



**Want to Know More
About This Home?**

CONTACT OUR COMMUNITY SALES MANAGER
Call Us @ 470.436.2641



**Want to Know More
About This Home?**

CONTACT OUR COMMUNITY SALES MANAGER
Call Us @ 470.436.2641

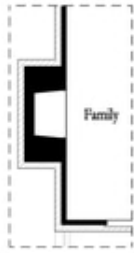


Left End
 Opt. Sprinkler Room

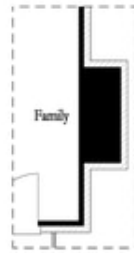


Right End
 Opt. Sprinkler Room

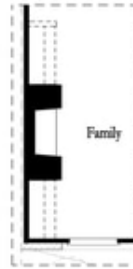
First Floor Options



Opt. Exterior Fireplace



Opt. Faux Exterior
 Fireplace



Opt. Fireplace



Opt. Linear Fireplace

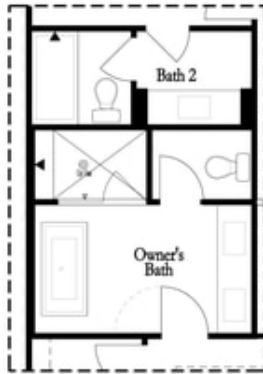
Second Floor Options

**Want to Know More
 About This Home?**

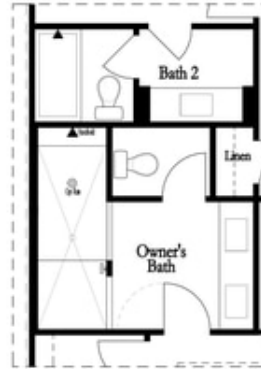
CONTACT OUR COMMUNITY SALES MANAGER
 Call Us @ 470.436.2641

Options

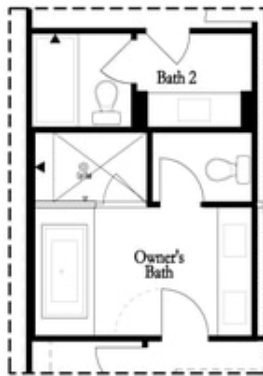
Third Floor Options



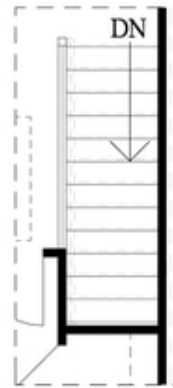
Opt. Freestanding
Tub/Shower Combo



Opt. Walk-Through Shower



Opt. Decked
Tub/Shower Combo



Opt. Open Rail

Want to Know More
About This Home?

CONTACT OUR COMMUNITY SALES MANAGER
Call Us @ 470.436.2641