



PRICED AT
\$831,480

 2379 Sq Ft

 4 Beds

 3.5 Baths

 2 Car Garage

 3.0 Story

Spring Into Savings with \$10K towards closing costs. Offer only available on contracts written by April 30, 2023 when financing with one of Seller's 4 preferred lenders. QUICK MOVE IN!! AWESOME UPGRADES! Our tree-lined Atley gated community in Downtown Alpharetta offers a pool, neighborhood garden, dog park and Alpha Loop running right through to get to all the great places Alpharetta has to offer. Brand new Atley floorplan you'll love! Walking distance to all the great hotspots in Downtown Alpharetta including Avalon and Maxwell Retail. Large bedroom on Terrace Level with huge walk-in-closet and full bath. Great for guest, office or secondary bedroom. OPEN CONCEPT LIVING on the main floor with 10' ceilings, walk-in pantry, sunroom that has access to the deck off the rear. Kitchen has all Willow Gray cabinets with Creekstone island along with Cambria Luxury Countertops. Black Matte hardware on cabinets and Plumbing Fixtures. Fireplace in Family Room for those few cold Georgia nights with beautiful Structure White Stacked Ledger Marble Surround. 3rd floor features oversized Owner's Suite in the front w/ large walk-in closet. Large shower offering 3 plumbing fixtures and FREE STANDING TUB with double vanity in Owner's Bath. HARDWOODS THROUGHOUT. Two bedrooms in the rear of ...

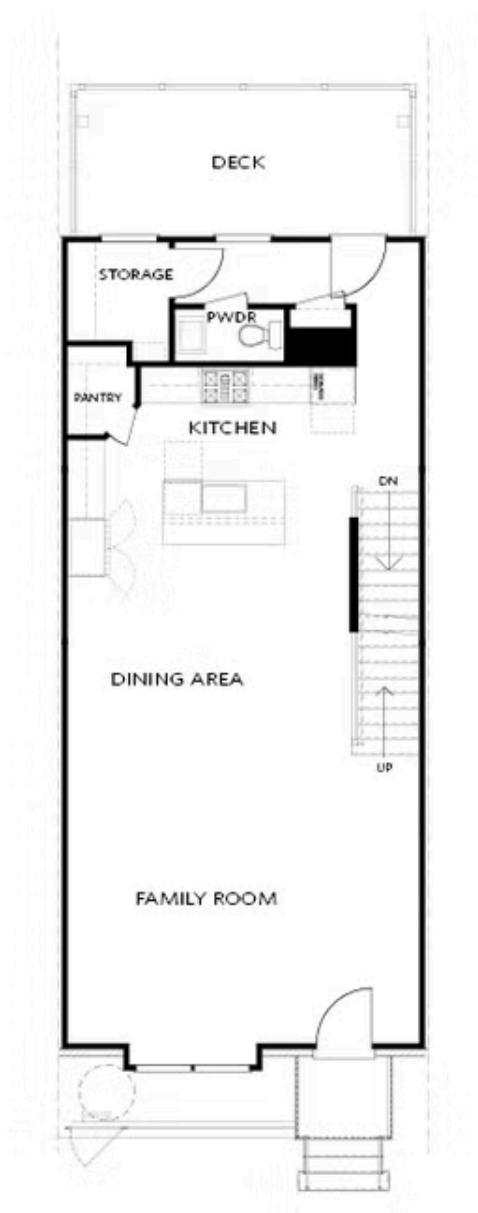
Want to Know More
About This Home?

CONTACT OUR COMMUNITY SALES MANAGER
Call Us @ 470.436.2641



Want to Know More
About This Home?

CONTACT OUR COMMUNITY SALES MANAGER
Call Us @ 470.436.2641



Elevation R

Want to Know More
About This Home?

CONTACT OUR COMMUNITY SALES MANAGER
Call Us @ 470.436.2641



Elevation R

Want to Know More
About This Home?

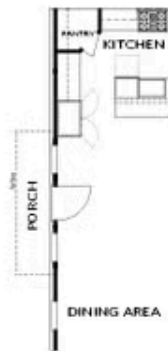
CONTACT OUR COMMUNITY SALES MANAGER
Call Us @ 470.436.2641



Laundry with Opt. 3rd Bedroom Only
(not available with 2 bedroom layout)



OPT Sunroom



OPT Side Porch
*End Unit Only



OPT Fireplace



OPT Linear Fireplace

Want to Know More
About This Home?

CONTACT OUR COMMUNITY SALES MANAGER
Call Us @ 470.436.2641



OPT Open Rail



OPT Bedroom 3 on Third Floor
*Only Available with Sunroom OPT
*Laundry Moved to Main Floor



OPT Walk-Through Shower



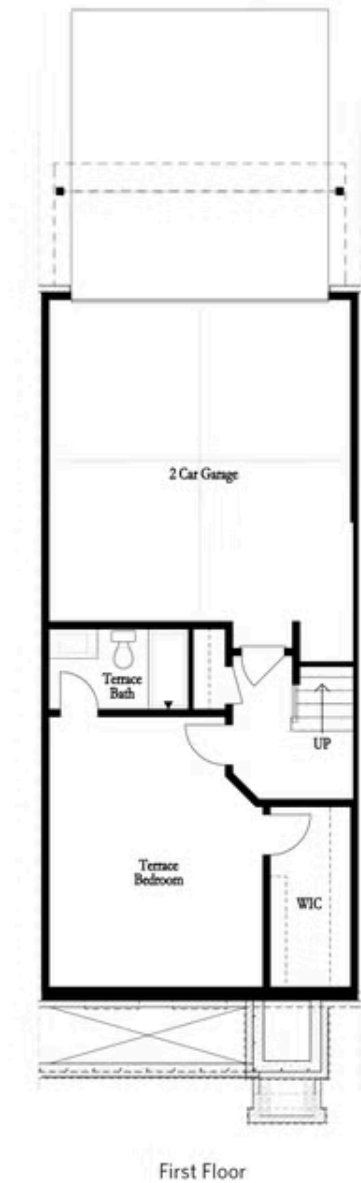
OPT Freestanding Tub with
Seperate Shower



OPT Decked Tub with
Seperate Shower

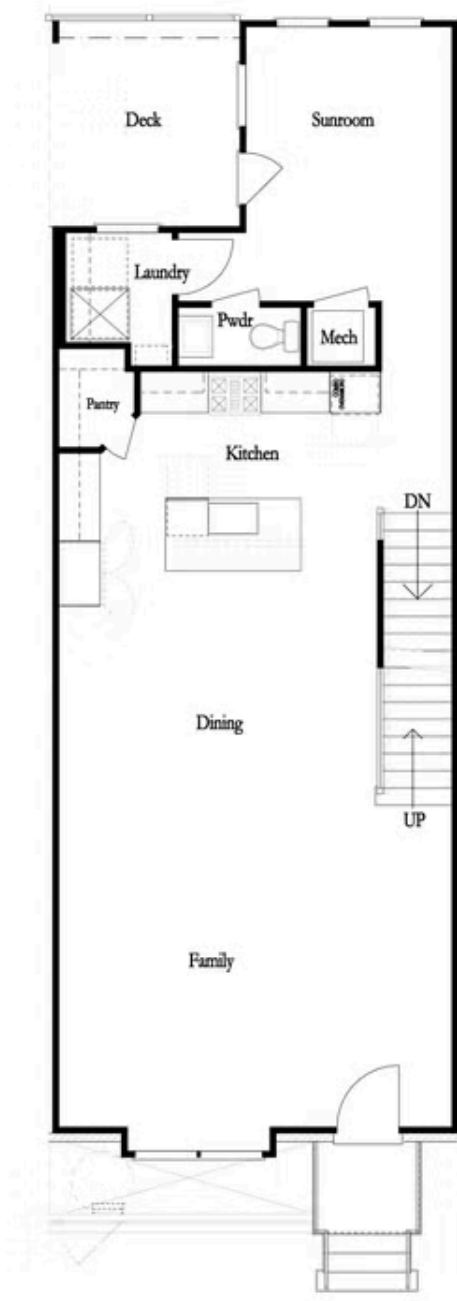
Want to Know More
About This Home?

CONTACT OUR COMMUNITY SALES MANAGER
Call Us @ 470.436.2641



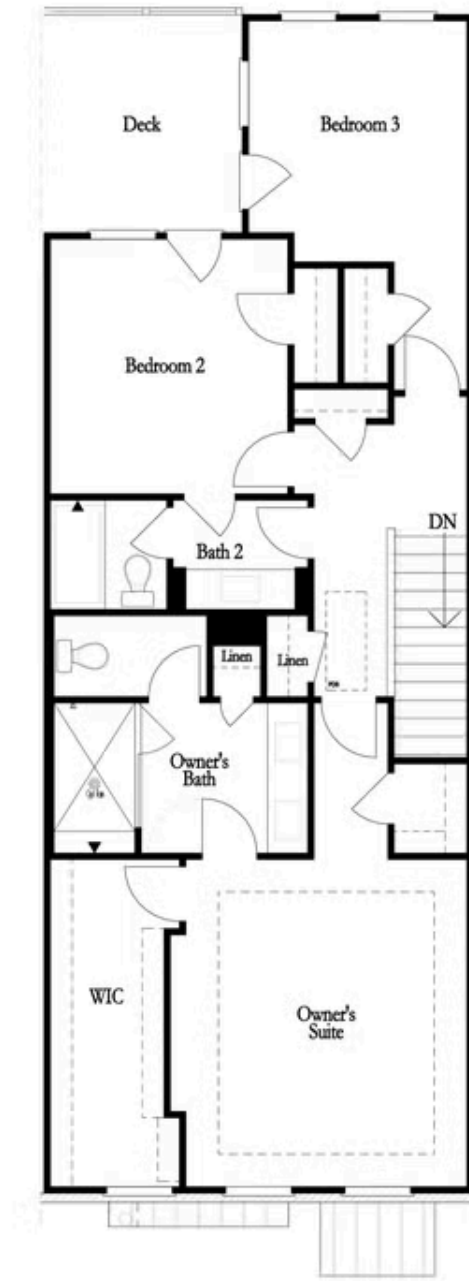
Want to Know More
About This Home?

CONTACT OUR COMMUNITY SALES MANAGER
Call Us @ 470.436.2641



Want to Know More
About This Home?

CONTACT OUR COMMUNITY SALES MANAGER
Call Us @ 470.436.2641



Want to Know More
About This Home?

CONTACT OUR COMMUNITY SALES MANAGER
Call Us @ 470.436.2641

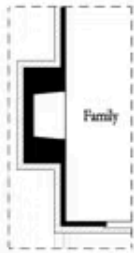


Left End
Opt. Sprinkler Room

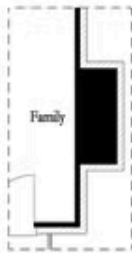


Right End
Opt. Sprinkler Room

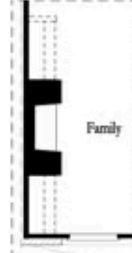
First Floor Options



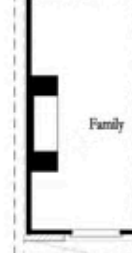
Opt. Exterior Fireplace



Opt. Faux Exterior
Fireplace



Opt. Fireplace



Opt. Linear Fireplace

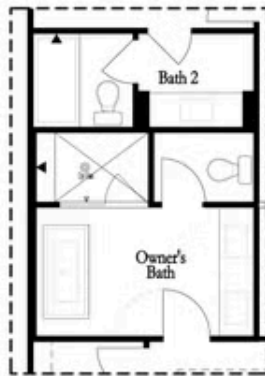
Second Floor Options

Want to Know More
About This Home?

CONTACT OUR COMMUNITY SALES MANAGER
Call Us @ 470.436.2641

Options

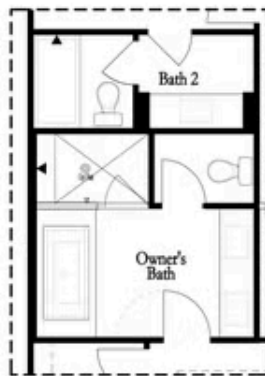
Third Floor Options



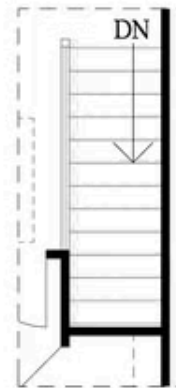
Opt. Freestanding
Tub/Shower Combo



Opt. Walk-Through Shower



Opt. Decked
Tub/Shower Combo



Opt. Open Rail

Want to Know More
About This Home?

CONTACT OUR COMMUNITY SALES MANAGER
Call Us @ 470.436.2641