

PRICED AT
\$855,160

 2379 Sq Ft

 4 Beds

 3.5 Baths

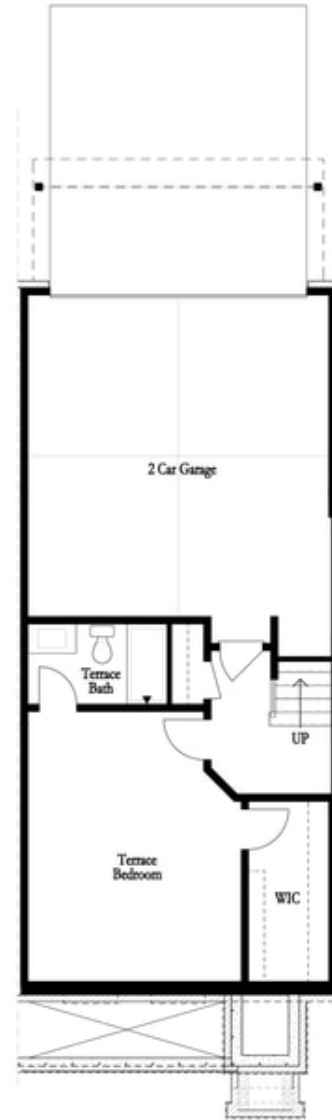
 2 Car Garage

 3.0 Story

Elevate your life in 2023 with a new home by The Providence Group and Be Home for Your Holiday Memories. **\$15,000 to use any way you want for contracts written during October 2023 that close November 2023!***! END UNIT! *** Come enter into our gated community offering dog park, pool and neighborhood garden and Alpha Loop running right on through with trees rustling all around. Walking distance to all the great hotspots in Downtown Alpharetta including Avalon and Maxwell Retail. HUGE bedroom on Terrace Level with an unexpected huge walk-in-closet and full bath perfect for guest retreat. Main floor with 10' ceilings has OPEN CONCEPT LIVING, walk-in pantry and sunroom that leads to the deck off the rear for some fresh air on those beautiful sunny days. Kitchen cabinets are 2-toned grey with Cambria Luxury Countertops. Matte Black hardware and Plumbing Fixtures add a beautiful touch. Family room fireplace has gorgeous BLACK VERTICAL SHIPLAP SURROUND which is sure to be a conversation piece. 3rd floor features your Owner's Suite getaway w/large walk-in closet. The spa like Owner's Bath has a large, frameless shower offering 3 plumbing fixtures and double vanity. Two bedrooms in the rear of the home share the ...

**Want to Know More
About This Home?**

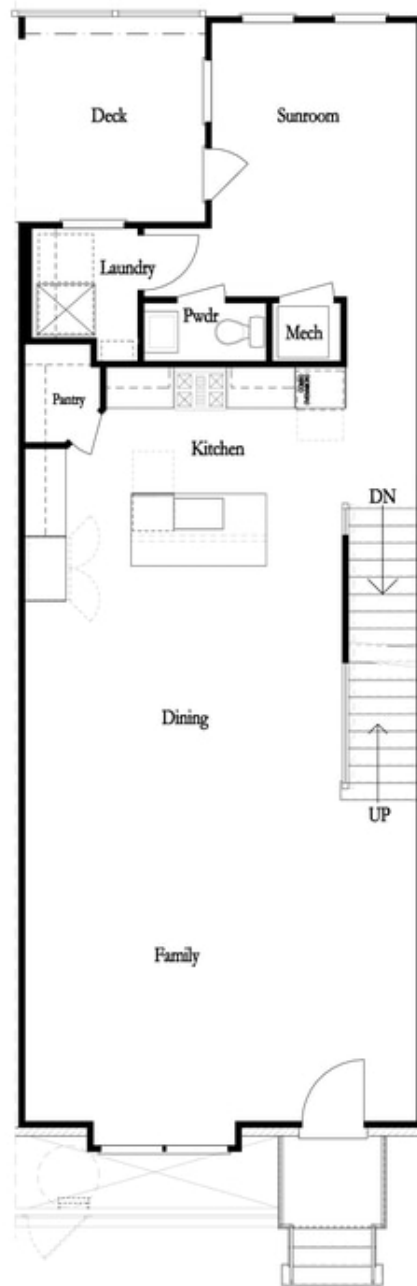
CONTACT OUR COMMUNITY SALES MANAGER
Call Us @ 470.436.2641



First Floor

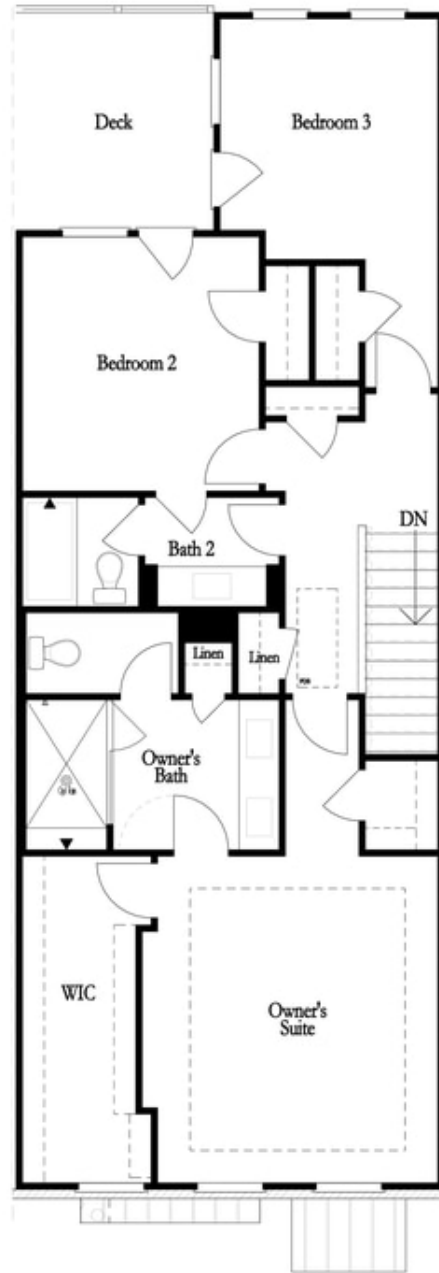
**Want to Know More
About This Home?**

CONTACT OUR COMMUNITY SALES MANAGER
Call Us @ 470.436.2641



**Want to Know More
About This Home?**

CONTACT OUR COMMUNITY SALES MANAGER
Call Us @ 470.436.2641



**Want to Know More
About This Home?**

CONTACT OUR COMMUNITY SALES MANAGER
Call Us @ 470.436.2641

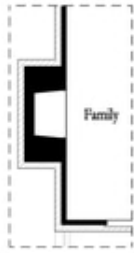


Left End
Opt. Sprinkler Room

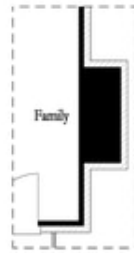


Right End
Opt. Sprinkler Room

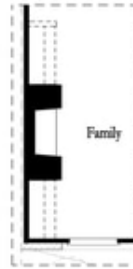
First Floor Options



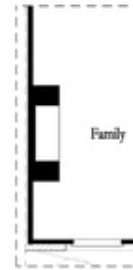
Opt. Exterior Fireplace



Opt. Faux Exterior
Fireplace



Opt. Fireplace



Opt. Linear Fireplace

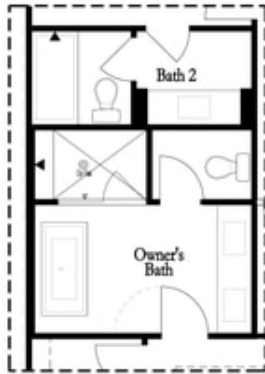
Second Floor Options

**Want to Know More
About This Home?**

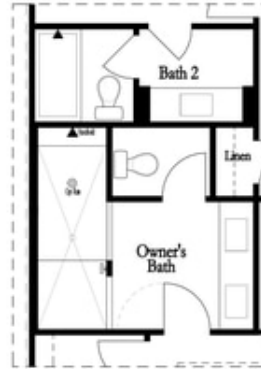
CONTACT OUR COMMUNITY SALES MANAGER
Call Us @ 470.436.2641

Options

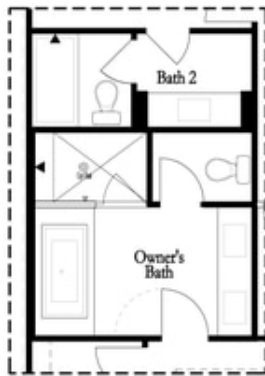
Third Floor Options



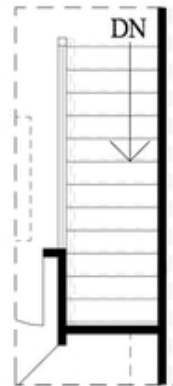
Opt. Freestanding
 Tub/Shower Combo



Opt. Walk-Through Shower



Opt. Decked
 Tub/Shower Combo



Opt. Open Rail

**Want to Know More
 About This Home?**

CONTACT OUR COMMUNITY SALES MANAGER
 Call Us @ 470.436.2641