



PRICED AT  
**\$842,575**

 2379 Sq Ft

 4 Beds

 3.5 Baths

 2 Car Garage

 3.0 Story

Spring into a New Home! \*\*\*MOVE-IN READY!!!\*\*\* ~~~ \$30,000 to use ANY WAY YOU WANT when using one of our 5-Preferred Lenders~~~ Perfect time for a brand new home here in beautiful Downtown Alpharetta! A little suburb in the midst of the city with just a stroll to all the hotspots Alpharetta has to offer. Atley is a gated community offering a pool, dog park and neighborhood garden for your enjoyment. 4 bedrooms/3.5 baths with OPEN CONCEPT LIVING & HARDWOODS THROUGHOUT. This home has beautiful SLATE AND WHITE DESIGN PALLET installed. Satin nickel hardware and fixtures, clean white cabinets and tile allowing you to decorate with any fun color that fits your style. Shiplap surround at the fireplace adds a nice accent to the space. FREE STANDING TUB and SHOWER in the Owner's Bath and DECKs off the Sunroom and both secondary bedrooms! A 4th private bedroom and bath are located on the terrace level giving your guests tons of privacy. 3-Story Brick Exterior and stone water table with 2-car garage and driveway long enough for 2 more cars. Front door entry on main level. Front TURF courtyard will stay green all year round. HOA maintained space. MOVE IN READY!!! ...

**Want to Know More  
About This Home?**

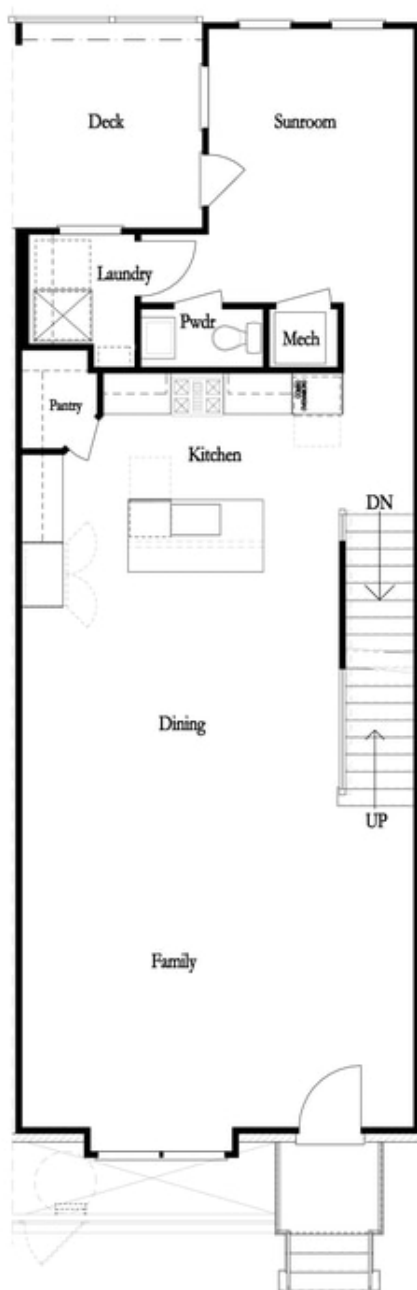
CONTACT OUR COMMUNITY SALES MANAGER  
Call Us @ 470.436.2641



First Floor

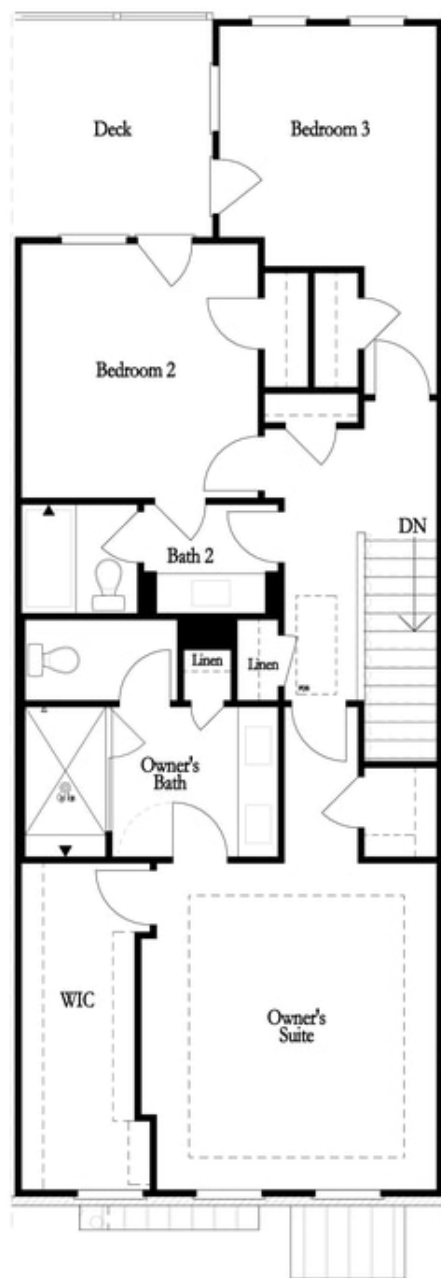
**Want to Know More  
About This Home?**

CONTACT OUR COMMUNITY SALES MANAGER  
Call Us @ 470.436.2641



**Want to Know More  
About This Home?**

CONTACT OUR COMMUNITY SALES MANAGER  
Call Us @ 470.436.2641



**Want to Know More  
About This Home?**

CONTACT OUR COMMUNITY SALES MANAGER  
Call Us @ 470.436.2641

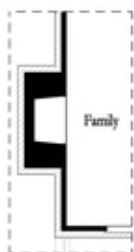


Left End  
Opt. Sprinkler Room

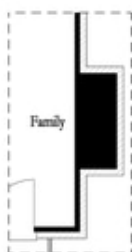


Right End  
Opt. Sprinkler Room

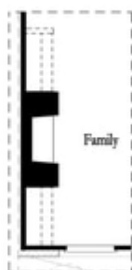
First Floor Options



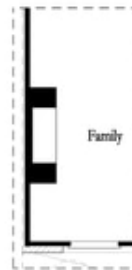
Opt. Exterior Fireplace



Opt. Faux Exterior  
Fireplace



Opt. Fireplace



Opt. Linear Fireplace

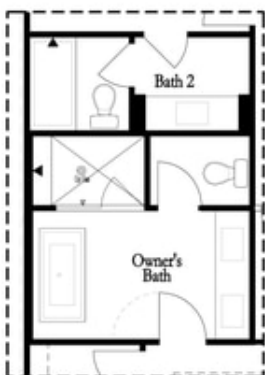
Second Floor Options

Want to Know More  
About This Home?

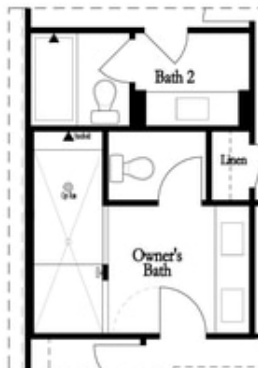
CONTACT OUR COMMUNITY SALES MANAGER  
Call Us @ 470.436.2641

### Options

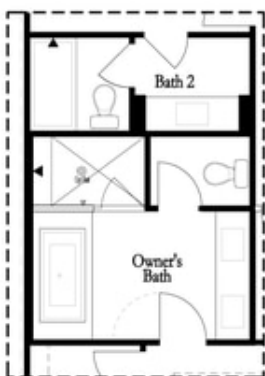
#### Third Floor Options



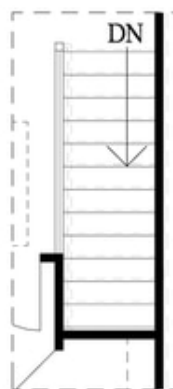
Opt. Freestanding  
Tub/Shower Combo



Opt. Walk-Through Shower



Opt. Decked  
Tub/Shower Combo



Opt. Open Rail

**Want to Know More  
About This Home?**

CONTACT OUR COMMUNITY SALES MANAGER  
Call Us @ 470.436.2641