



PRICED AT  
**\$799,900**

 2379 Sq Ft

 4 Beds

 3.5 Baths

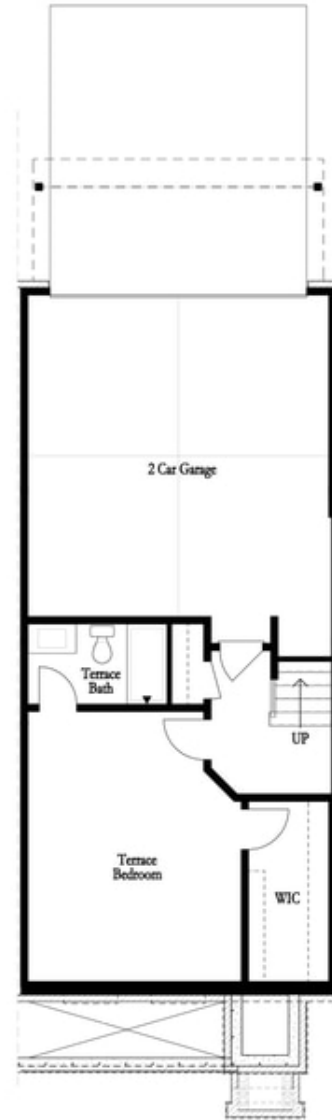
 2 Car Garage

 3.0 Story

**\$799,900 Price Improvement on Final Remaining Home-Save over \$40k in Price Reduction on this Final Home located in Alpharetta's most sought after neighborhood Atley!! Home Site 6 offers 4 Bedroom, 3.5 Bath, Hardwoods throughout plus fenced in yard all located within prestigious gated community in Downtown Alpharetta. Entertain with ease in your open concept kitchen featuring Stacked white, soft close cabinets with clean quartz countertops plus pantry for easy storage. Additional Sunroom on main level presents for an ideal office space with covered patio. Upper level features oversized owners suite with HUGE walk in closet, Frameless Glass Walk in Shower & Free Standing Tub. 2 additional bedroom plus full bathroom with additional decks off each bedroom. Lower level features HUGE 4th guest bedroom, walk in closet, and additional Full Bathroom. Oversized 2 car garage with additional guest parking on driveway make this home an entertainers dream! | At TPG, we value our customer, team member, and vendor team safety. Our communities are active construction zones and may not be safe to visit at certain stages of construction. Due to this, we ask all agents visiting the community with their clients come to the office prior to visiting any listed homes. ...**

**Want to Know More  
About This Home?**

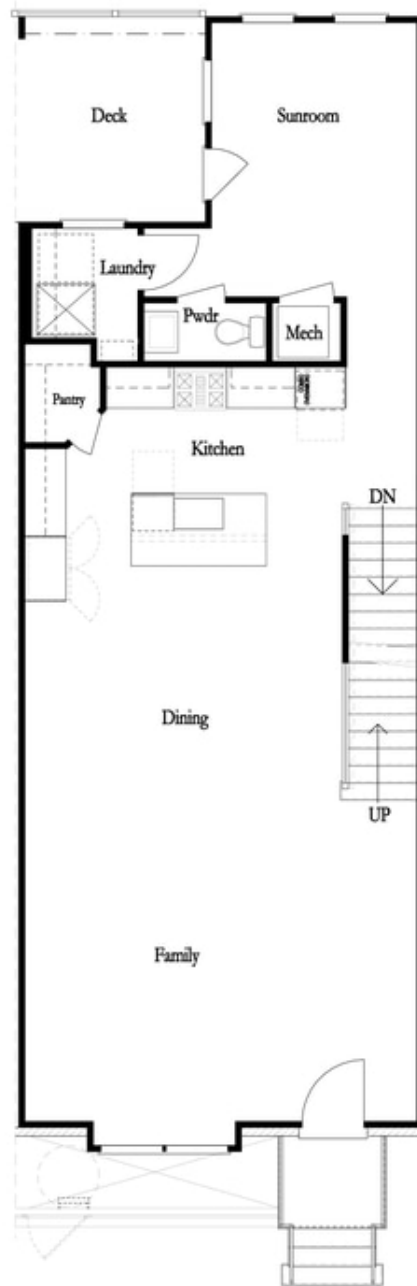
CONTACT OUR COMMUNITY SALES MANAGER  
Call Us @ 470.436.2641



First Floor

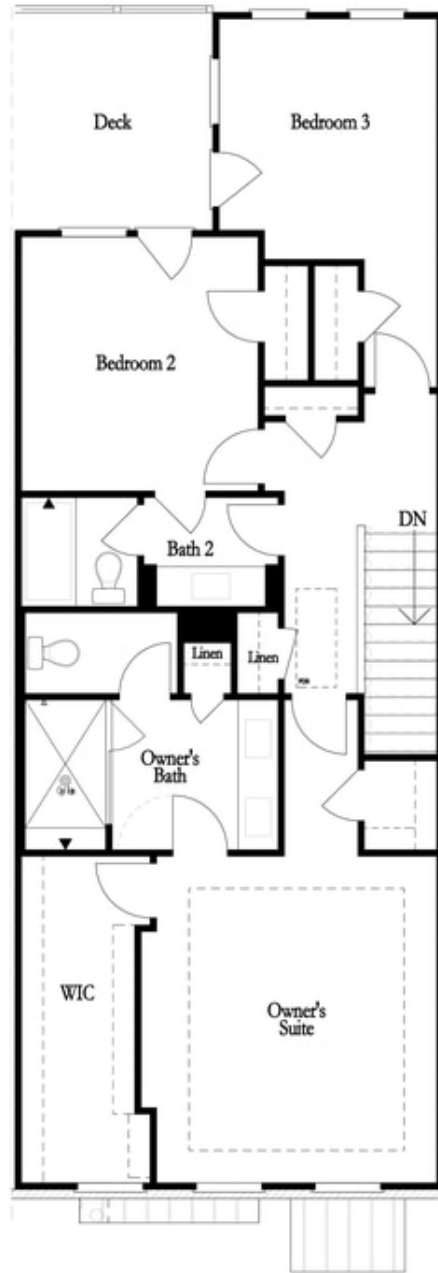
**Want to Know More  
About This Home?**

CONTACT OUR COMMUNITY SALES MANAGER  
Call Us @ 470.436.2641



**Want to Know More  
About This Home?**

CONTACT OUR COMMUNITY SALES MANAGER  
Call Us @ 470.436.2641



**Want to Know More  
About This Home?**

CONTACT OUR COMMUNITY SALES MANAGER  
Call Us @ 470.436.2641

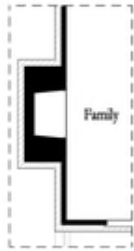


Left End  
 Opt. Sprinkler Room

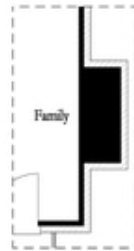


Right End  
 Opt. Sprinkler Room

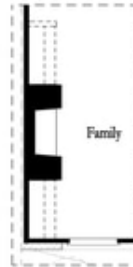
First Floor Options



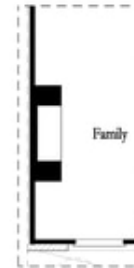
Opt. Exterior Fireplace



Opt. Faux Exterior  
 Fireplace



Opt. Fireplace



Opt. Linear Fireplace

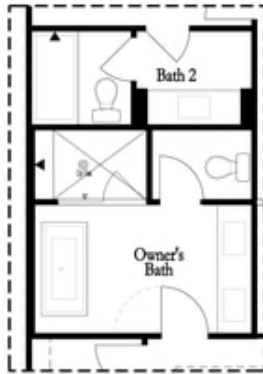
Second Floor Options

**Want to Know More  
 About This Home?**

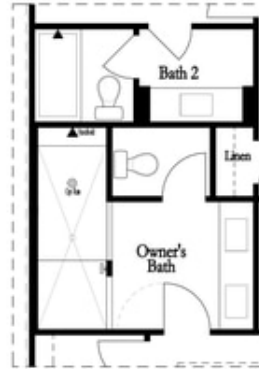
CONTACT OUR COMMUNITY SALES MANAGER  
 Call Us @ 470.436.2641

Options

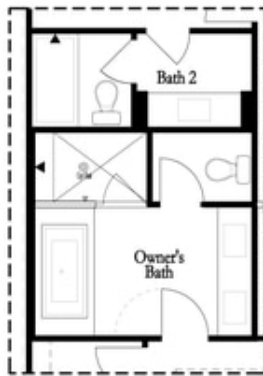
Third Floor Options



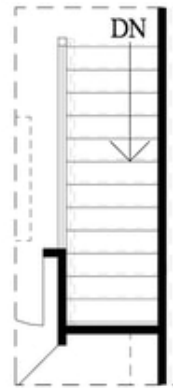
Opt. Freestanding  
 Tub/Shower Combo



Opt. Walk-Through Shower



Opt. Decked  
 Tub/Shower Combo



Opt. Open Rail

**Want to Know More  
 About This Home?**

CONTACT OUR COMMUNITY SALES MANAGER  
 Call Us @ 470.436.2641