



PRICED AT
\$841,765

 2388 Sq Ft

 4 Beds

 3.5 Baths

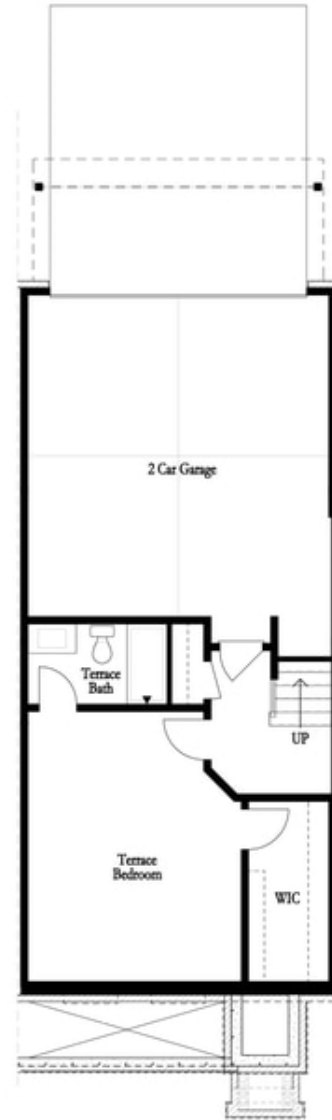
 2 Car Garage

 3.0 Story

Spring into a New Home! ***MOVE-IN READY!!!*** ~~~ \$30,000 to use ANY WAY YOU WANT when using one of our 5-Preferred Lenders~~~ You are greeted with a front fenced turf courtyard as you approach the Benton floorplan on lot 5. Main floor entry into a spacious OPEN family room, dining area and kitchen. As you enter, you will immediately notice the white brick fireplace with a natural box beam mantel - it is sure to be the focal point for family room gatherings. Next you will be drawn to the WHITE AND NAVY DESIGN FEATURES in the kitchen. Stacked white cabinets and a navy island with quartz countertops are a show stopper. The island is a central spot while prepping for dinner. Add some barstools for casual dining. Around the corner from the kitchen is the laundry room and the sunroom which leads to a covered deck area. HARDWOOD floors on the main flow throughout the rest of the home while hardwood stair treads lead you to the bedrooms. The owners suite is located on the upper floor and has plenty of room for a king size bed and side tables. The spa like owner's bath has a double vanity ...

Want to Know More
About This Home?

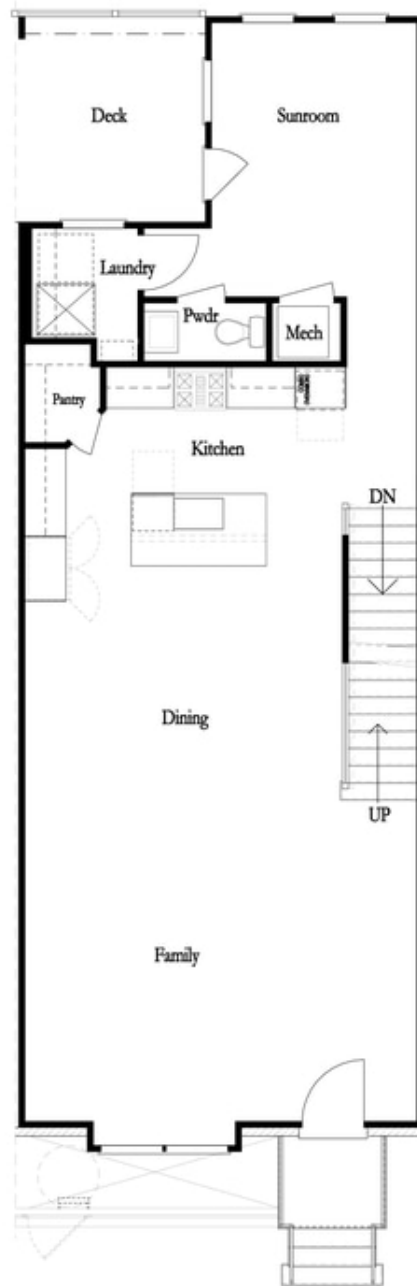
CONTACT OUR COMMUNITY SALES MANAGER
Call Us @ 470.436.2641



First Floor

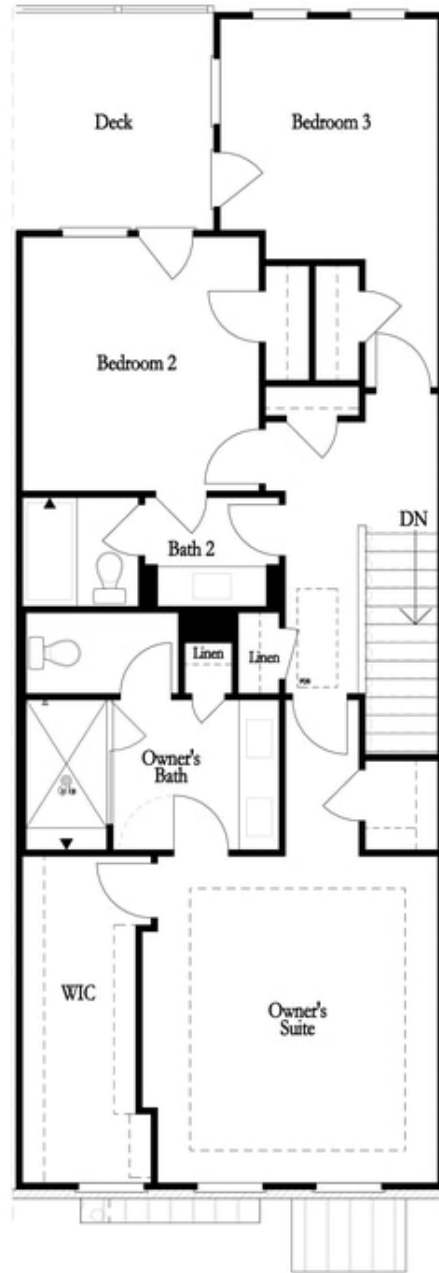
**Want to Know More
About This Home?**

CONTACT OUR COMMUNITY SALES MANAGER
Call Us @ 470.436.2641



**Want to Know More
About This Home?**

CONTACT OUR COMMUNITY SALES MANAGER
Call Us @ 470.436.2641



**Want to Know More
About This Home?**

CONTACT OUR COMMUNITY SALES MANAGER
Call Us @ 470.436.2641

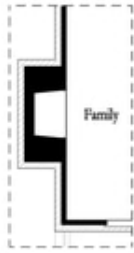


Left End
Opt. Sprinkler Room

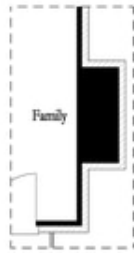


Right End
Opt. Sprinkler Room

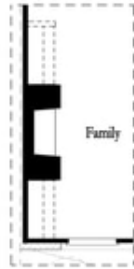
First Floor Options



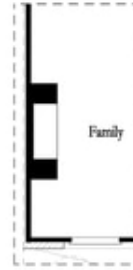
Opt. Exterior Fireplace



Opt. Faux Exterior
Fireplace



Opt. Fireplace



Opt. Linear Fireplace

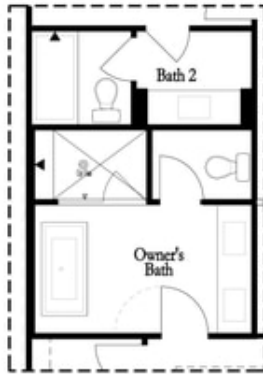
Second Floor Options

Want to Know More
About This Home?

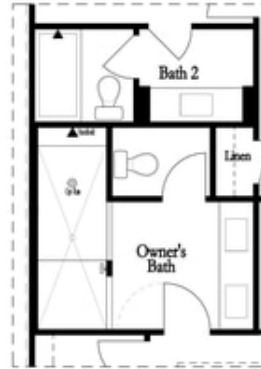
CONTACT OUR COMMUNITY SALES MANAGER
Call Us @ 470.436.2641

Options

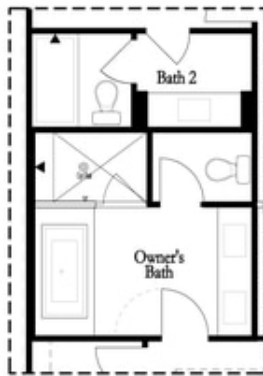
Third Floor Options



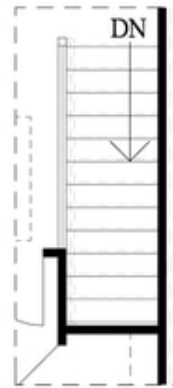
Opt. Freestanding
 Tub/Shower Combo



Opt. Walk-Through Shower



Opt. Decked
 Tub/Shower Combo



Opt. Open Rail

**Want to Know More
 About This Home?**

CONTACT OUR COMMUNITY SALES MANAGER
 Call Us @ 470.436.2641