



PRICED AT  
**\$835,770**

 2379 Sq Ft

 4 Beds

 3.5 Baths

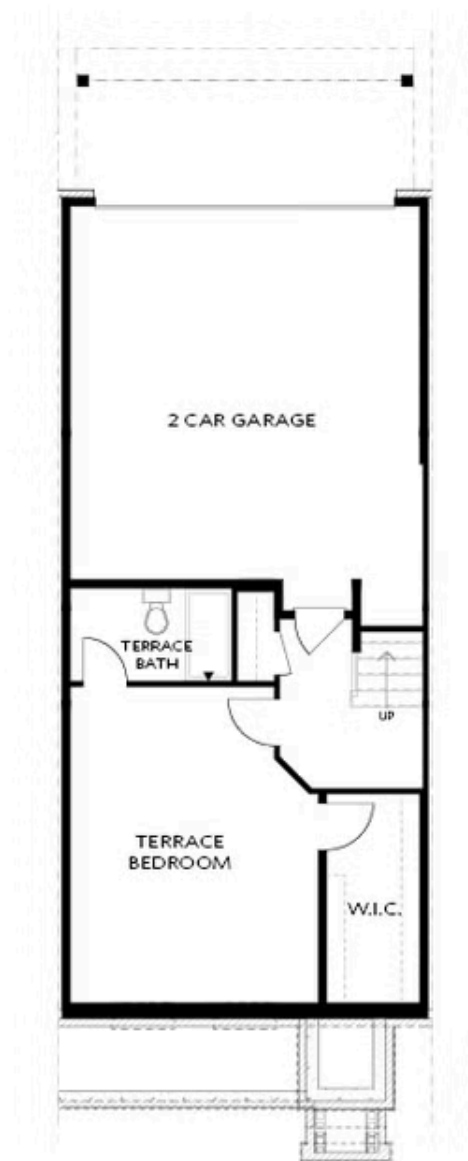
 2 Car Garage

 3.0 Story

Elevate your life in 2023 with a new home by The Providence Group and Be Home for Your Holiday Memories. **\*\*\$15,000 to use any way you want for contracts written during October 2023 that close November 2023!\*\*** Come be a part of Downtown Alpharetta with this MOVE-IN-READY home! All bedrooms are a great size for living comfortably or switching it up and making them office or workout space. OPEN CONCEPT LIVING is an understatement with the tall ceilings and stacked cabinets. FARM SINK and VERTICAL SHIPLAP SURROUND on the fireplace adds a sweet touch to the design. SOFT GRAY and WHITE COLOUR PALLET keeps the design clean for your personal style to flourish. Outdoor space for those crisp Fall days or bird chirping Spring mornings to enjoy coffee or gaze at the stars. Sunroom with deck tucked behind the kitchen is the perfect spot to set up your office or lounge space to enjoy a good book. HARDWOODS THROUGHOUT and MEGA OWNER'S SHOWER are the few special options setting this home apart from others. This townhome with TONS OF UPGRADES lies in a gated community with dog park, pool and neighborhood garden with the Alpha Loop running right on through ...

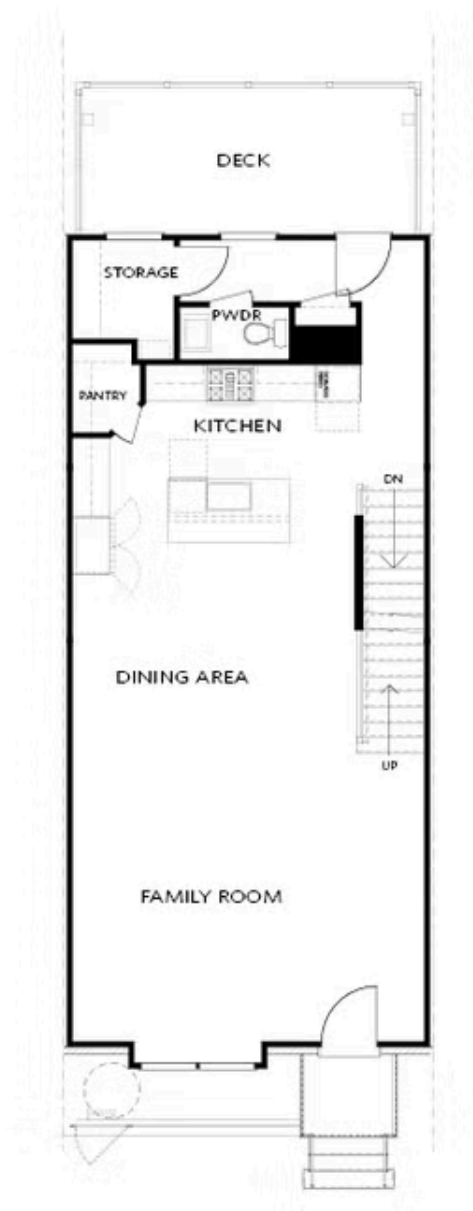
Want to Know More  
About This Home?

CONTACT OUR COMMUNITY SALES MANAGER  
Call Us @ 470.436.2641



Want to Know More  
About This Home?

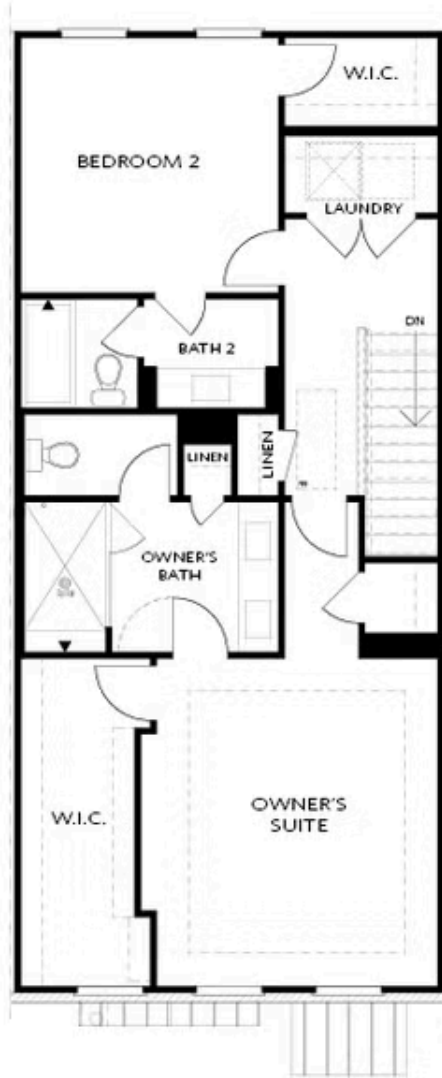
CONTACT OUR COMMUNITY SALES MANAGER  
Call Us @ 470.436.2641



Elevation R

Want to Know More  
About This Home?

CONTACT OUR COMMUNITY SALES MANAGER  
Call Us @ 470.436.2641



Elevation R

Want to Know More  
About This Home?

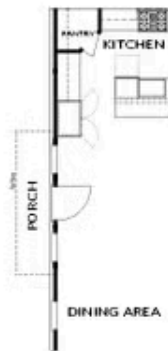
CONTACT OUR COMMUNITY SALES MANAGER  
Call Us @ 470.436.2641



Laundry with Opt. 3rd Bedroom Only  
(not available with 2 bedroom layout)



OPT Sunroom



OPT Side Porch  
\*End Unit Only



OPT Fireplace



OPT Linear Fireplace

Want to Know More  
About This Home?

CONTACT OUR COMMUNITY SALES MANAGER  
Call Us @ 470.436.2641



OPT Open Rail



OPT Bedroom 3 on Third Floor  
\*Only Available with Sunroom OPT  
\*Laundry Moved to Main Floor



OPT Walk-Through Shower



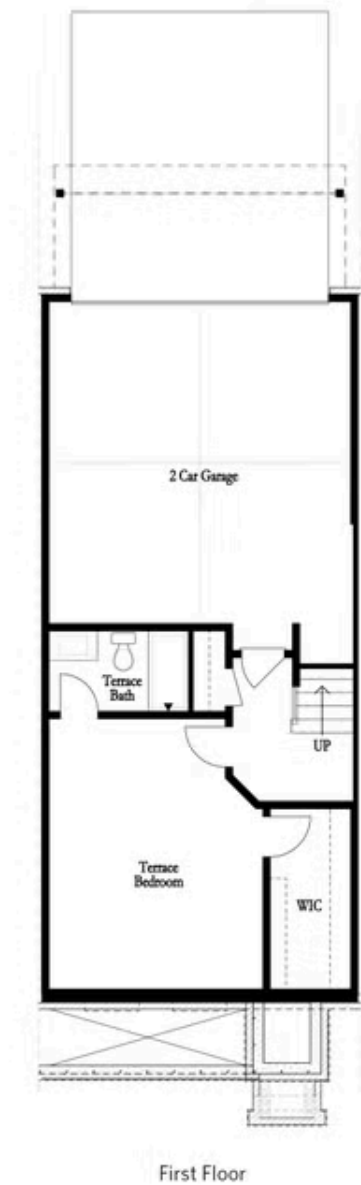
OPT Freestanding Tub with  
Seperate Shower



OPT Decked Tub with  
Seperate Shower

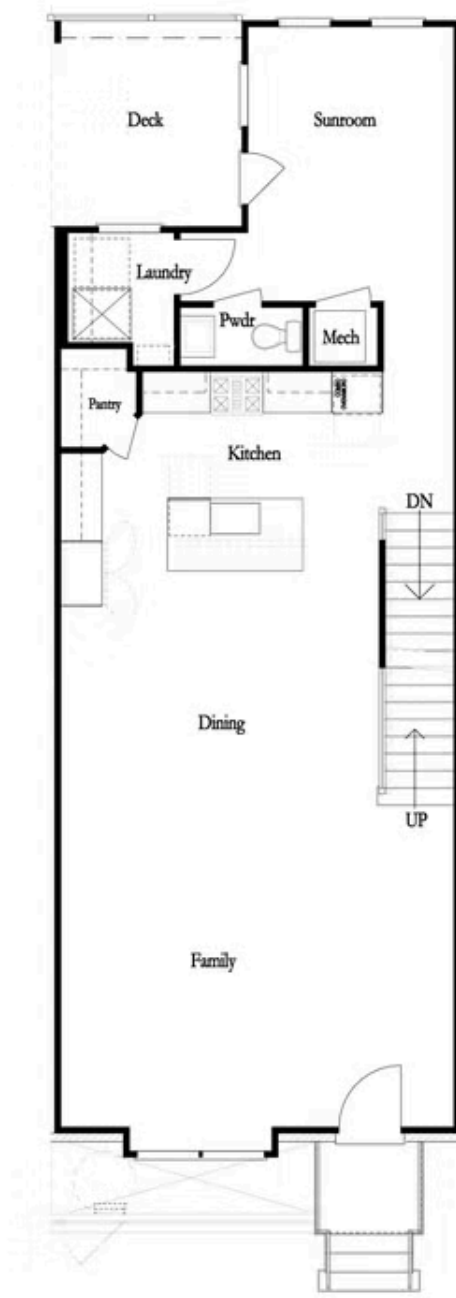
Want to Know More  
About This Home?

CONTACT OUR COMMUNITY SALES MANAGER  
Call Us @ 470.436.2641



Want to Know More  
About This Home?

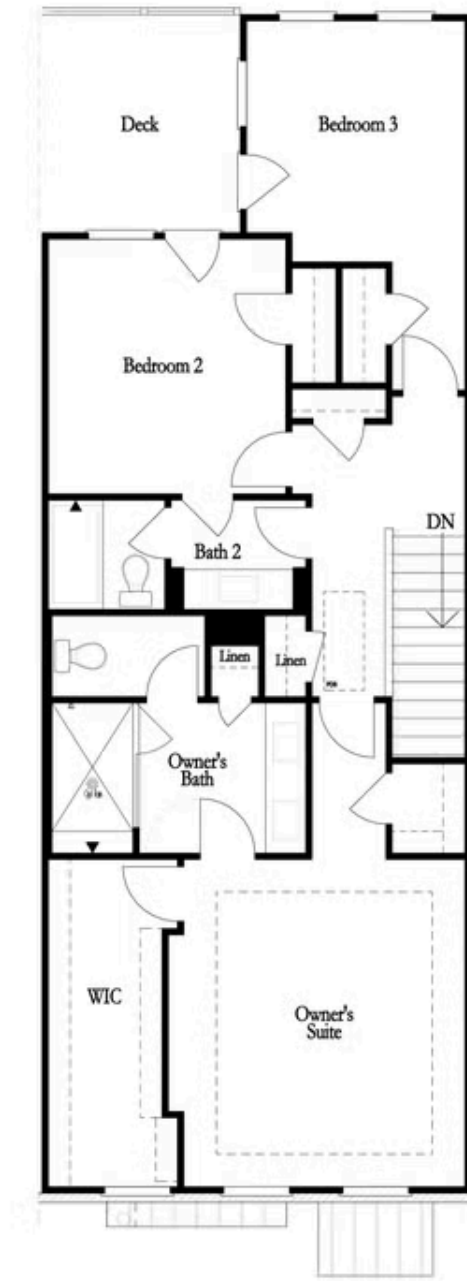
CONTACT OUR COMMUNITY SALES MANAGER  
Call Us @ 470.436.2641



Want to Know More  
About This Home?

CONTACT OUR COMMUNITY SALES MANAGER  
Call Us @ 470.436.2641





Want to Know More  
About This Home?

CONTACT OUR COMMUNITY SALES MANAGER  
Call Us @ 470.436.2641

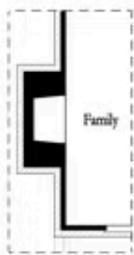


Left End  
Opt. Sprinkler Room



Right End  
Opt. Sprinkler Room

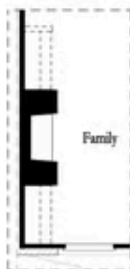
First Floor Options



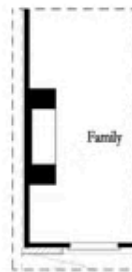
Opt. Exterior Fireplace



Opt. Faux Exterior  
Fireplace



Opt. Fireplace



Opt. Linear Fireplace

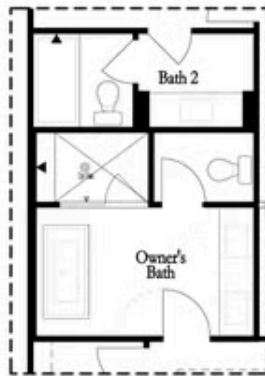
Second Floor Options

Want to Know More  
About This Home?

CONTACT OUR COMMUNITY SALES MANAGER  
Call Us @ 470.436.2641

### Options

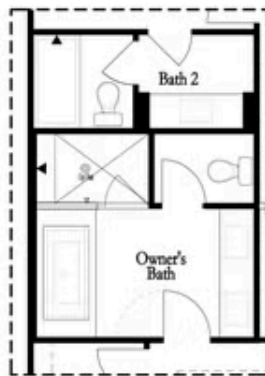
#### Third Floor Options



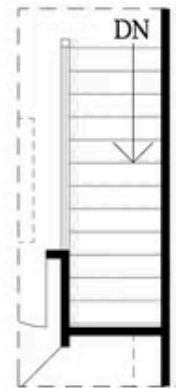
Opt. Freestanding  
Tub/Shower Combo



Opt. Walk-Through Shower



Opt. Decked  
Tub/Shower Combo



Opt. Open Rail

Want to Know More  
About This Home?

CONTACT OUR COMMUNITY SALES MANAGER  
Call Us @ 470.436.2641