



PRICED AT  
**\$799,900**

 2379 Sq Ft

 4 Beds

 3.5 Baths

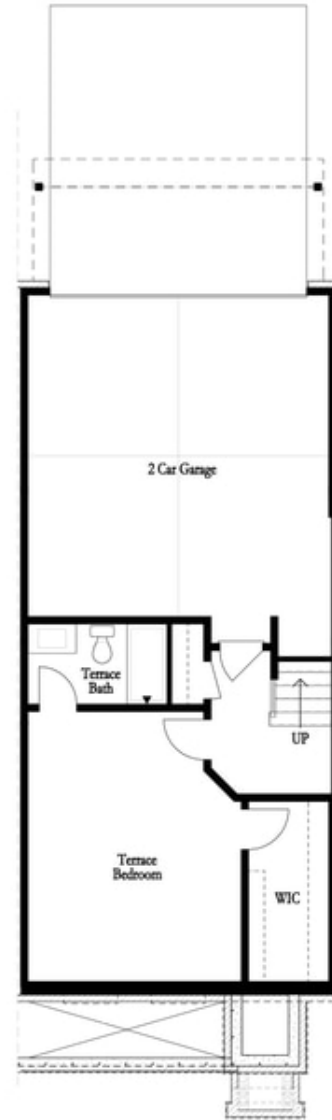
 2 Car Garage

 3.0 Story

**\$799,900 Price Improvement on Final Remaining Home-Save over \$40k in Price Reduction on this Final Home located in Alpharetta's most sought after neighborhood Atley!! Our tree-lined Atley gated community in Downtown Alpharetta offers a pool, neighborhood garden, dog park and Alpha Loop running right through to get to all the great places Alpharetta has to offer. Walking distance to all the great hotspots in Downtown Alpharetta including Avalon and Maxwell Retail. Large bedroom on Terrace Level with an unexpected huge walk-in-closet and full bath. OPEN CONCEPT LIVING, walk-in pantry and sunroom that leads to the deck off the rear for some fresh air on those beautiful spring days. WHITE AND DRIFTWOOD DESIGN FEATURES throughout and BRUSHED GOLD HARDWARE add a beautiful touch. Family room fireplace offers VERTICAL SHIPLAP Surround making it a fun entertaining focal point. The 3rd floor features an oversized Owner's Suite w/large walk-in closet. SO MUCH OUTDOOR SPACE! The spa like owners bath has a large shower offering 3 plumbing fixtures, and double vanity. HARDWOODS THROUGHOUT. Two bedrooms in the rear of the home can both access the 2nd deck and enjoy some sunshine! 2-car garage and driveway long enough for 2 more cars. Front door entry ...**

**Want to Know More  
About This Home?**

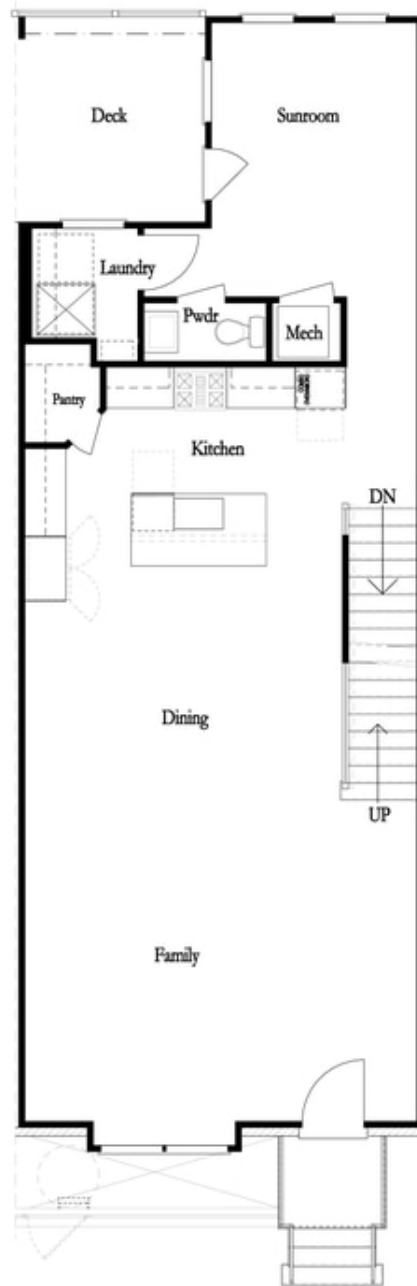
CONTACT OUR COMMUNITY SALES MANAGER  
Call Us @ 470.436.2641



First Floor

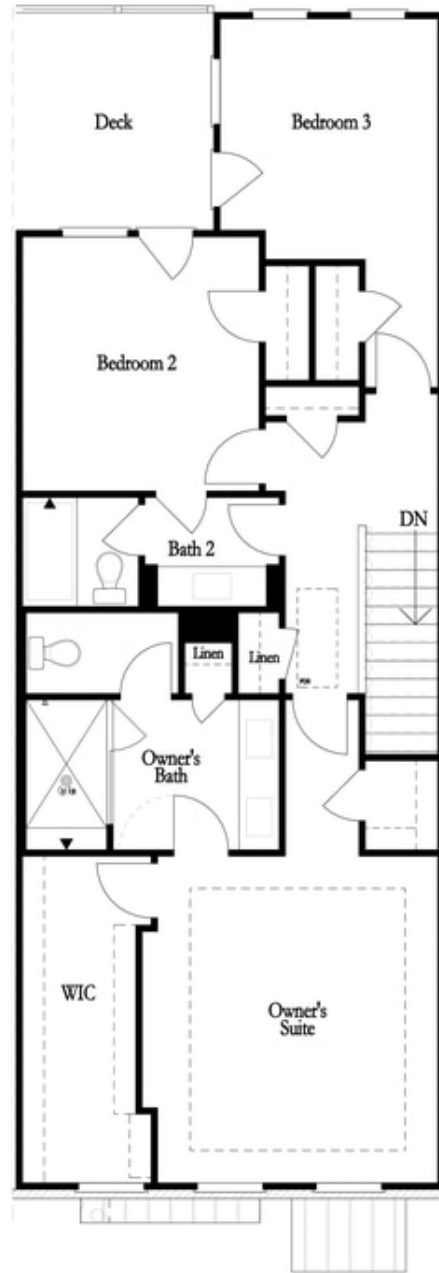
**Want to Know More  
About This Home?**

CONTACT OUR COMMUNITY SALES MANAGER  
Call Us @ 470.436.2641



**Want to Know More  
About This Home?**

CONTACT OUR COMMUNITY SALES MANAGER  
Call Us @ 470.436.2641



**Want to Know More  
About This Home?**

CONTACT OUR COMMUNITY SALES MANAGER  
Call Us @ 470.436.2641

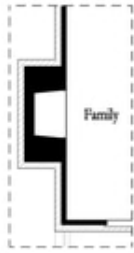


Left End  
Opt. Sprinkler Room

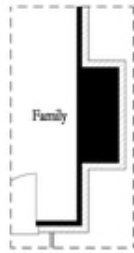


Right End  
Opt. Sprinkler Room

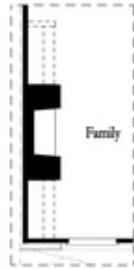
First Floor Options



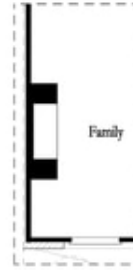
Opt. Exterior Fireplace



Opt. Faux Exterior  
Fireplace



Opt. Fireplace



Opt. Linear Fireplace

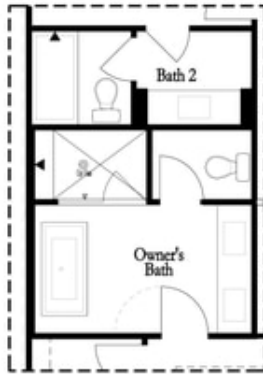
Second Floor Options

Want to Know More  
About This Home?

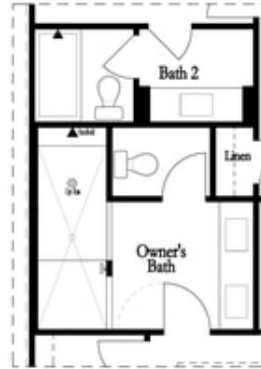
CONTACT OUR COMMUNITY SALES MANAGER  
Call Us @ 470.436.2641

Options

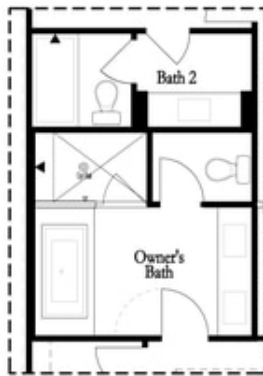
Third Floor Options



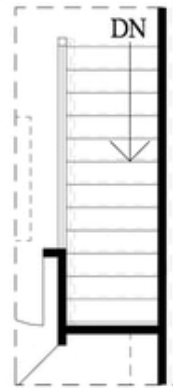
Opt. Freestanding  
 Tub/Shower Combo



Opt. Walk-Through Shower



Opt. Decked  
 Tub/Shower Combo



Opt. Open Rail

**Want to Know More  
 About This Home?**

CONTACT OUR COMMUNITY SALES MANAGER  
 Call Us @ 470.436.2641