



PRICED AT
\$846,635

 2379 Sq Ft

 4 Beds

 3.5 Baths

 2 Car Garage

 3.0 Story

New Home, New Year, New You! ***MOVE-IN READY!!!*** ~~~ \$30,000 to use ANY WAY YOU WANT on contracts written prior to 2/29/24 using one of our 5-Preferred Lenders and close in March'24~~~ You've found the perfect spot that feels like the suburbs in the heart of all Alpharetta has to offer! Atley is a tree-lined gated community with amenities including a pool, neighborhood garden, dog park and Alpha Loop running right through to get to all the great places in Downtown Alpharetta. Step into lot 2 Benton II plan with OPEN CONCEPT LIVING family, dining and kitchen. WHITE AND DRIFTWOOD DESIGN FEATURES throughout and OIL RUBBED BRONZE hardware add a beautiful touch. The family room fireplace offers STACKED STONE surround making it an awesome focal point. Around the corner from the kitchen, you will find a sunroom that leads to the deck off the rear and a laundry room that is tucked away from view of visitors. The 3rd floor has an oversized Owner's Suite w/large walk-in closet. The spa like owners bath offers a large shower with 3 plumbing fixtures, FREE STANDING TUB and double vanity. HARDWOODS THROUGHOUT. Two bedrooms in the rear of the home can both ...

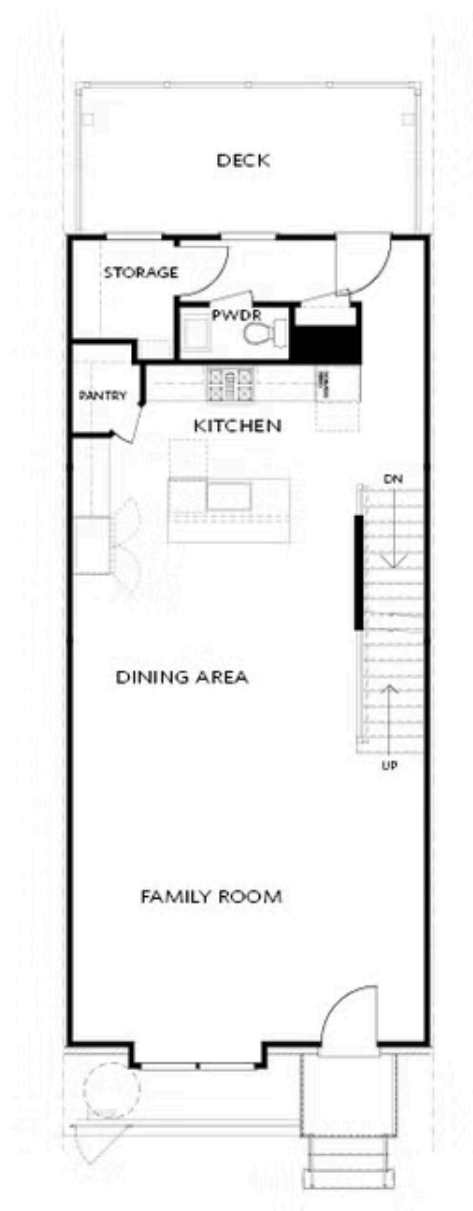
**Want to Know More
About This Home?**

CONTACT OUR COMMUNITY SALES MANAGER
Call Us @ 470.436.2641



Want to Know More
About This Home?

CONTACT OUR COMMUNITY SALES MANAGER
Call Us @ 470.436.2641



Elevation R

Want to Know More
About This Home?

CONTACT OUR COMMUNITY SALES MANAGER
Call Us @ 470.436.2641



Elevation R

Want to Know More
About This Home?

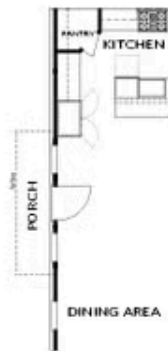
CONTACT OUR COMMUNITY SALES MANAGER
Call Us @ 470.436.2641



Laundry with Opt. 3rd Bedroom Only
(not available with 2 bedroom layout)



OPT Sunroom



OPT Side Porch
*End Unit Only



OPT Fireplace



OPT Linear Fireplace

Want to Know More
About This Home?

CONTACT OUR COMMUNITY SALES MANAGER
Call Us @ 470.436.2641



OPT Open Rail



OPT Bedroom 3 on Third Floor
*Only Available with Sunroom OPT
*Laundry Moved to Main Floor



OPT Walk-Through Shower



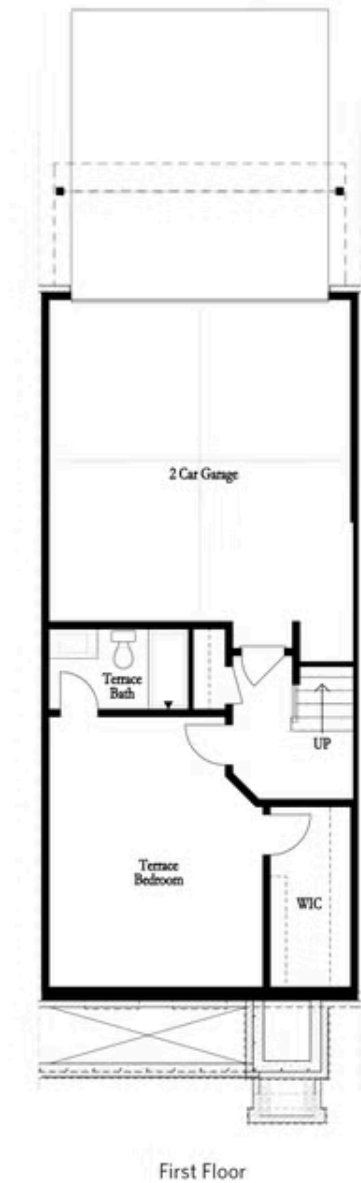
OPT Freestanding Tub with
Seperate Shower



OPT Decked Tub with
Seperate Shower

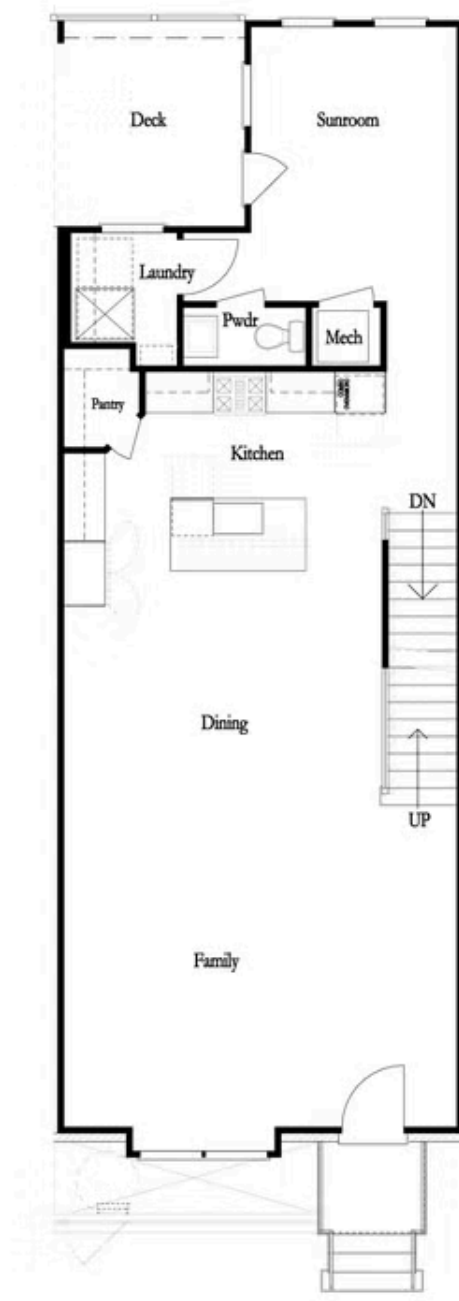
Want to Know More
About This Home?

CONTACT OUR COMMUNITY SALES MANAGER
Call Us @ 470.436.2641



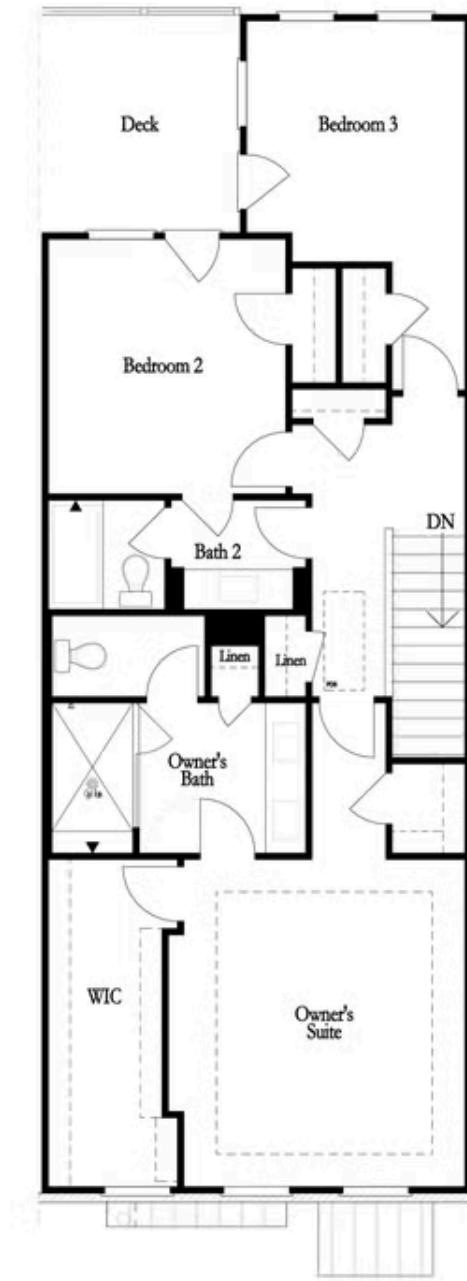
Want to Know More
About This Home?

CONTACT OUR COMMUNITY SALES MANAGER
Call Us @ 470.436.2641



Want to Know More
About This Home?

CONTACT OUR COMMUNITY SALES MANAGER
Call Us @ 470.436.2641



Want to Know More
About This Home?

CONTACT OUR COMMUNITY SALES MANAGER
Call Us @ 470.436.2641

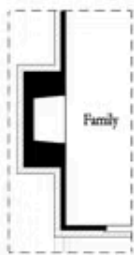


Left End
Opt. Sprinkler Room



Right End
Opt. Sprinkler Room

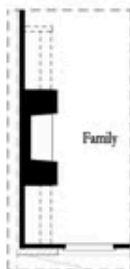
First Floor Options



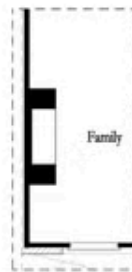
Opt. Exterior Fireplace



Opt. Faux Exterior
Fireplace



Opt. Fireplace



Opt. Linear Fireplace

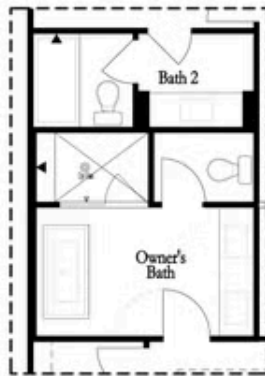
Second Floor Options

Want to Know More
About This Home?

CONTACT OUR COMMUNITY SALES MANAGER
Call Us @ 470.436.2641

Options

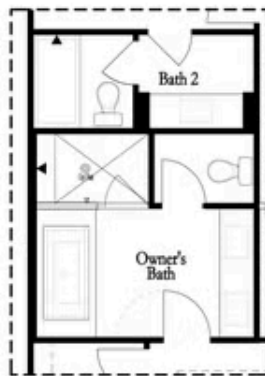
Third Floor Options



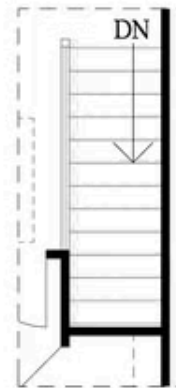
Opt. Freestanding
Tub/Shower Combo



Opt. Walk-Through Shower



Opt. Decked
Tub/Shower Combo



Opt. Open Rail

Want to Know More
About This Home?

CONTACT OUR COMMUNITY SALES MANAGER
Call Us @ 470.436.2641