



PRICED AT
\$846,635

 2379 Sq Ft

 4 Beds

 3.5 Baths

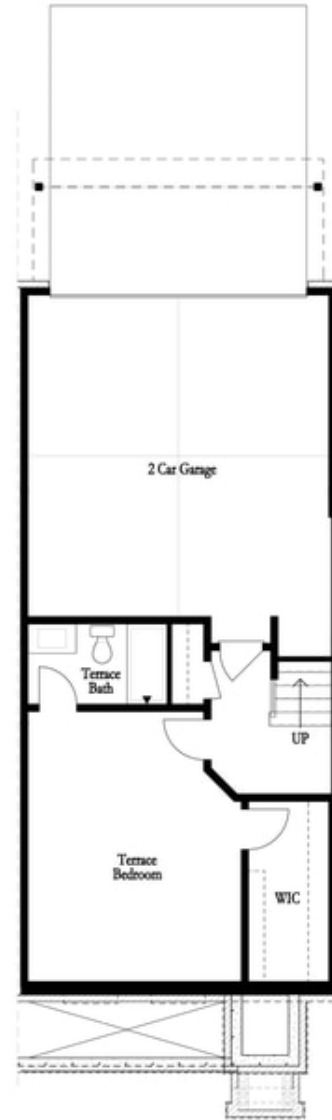
 2 Car Garage

 3.0 Story

New Home, New Year, New You! *MOVE-IN READY!!!*** ~~~ \$30,000 to use ANY WAY YOU WANT on contracts written prior to 2/29/24 using one of our 5-Preferred Lenders and close in March'24~~~ You've found the perfect spot that feels like the suburbs in the heart of all Alpharetta has to offer! Atley is a tree-lined gated community with amenities including a pool, neighborhood garden, dog park and Alpha Loop running right through to get to all the great places in Downtown Alpharetta. Step into lot 2 Benton II plan with OPEN CONCEPT LIVING family, dining and kitchen. WHITE AND DRIFTWOOD DESIGN FEATURES throughout and OIL RUBBED BRONZE hardware add a beautiful touch. The family room fireplace offers STACKED STONE surround making it an awesome focal point. Around the corner from the kitchen, you will find a sunroom that leads to the deck off the rear and a laundry room that is tucked away from view of visitors. The 3rd floor has an oversized Owner's Suite w/large walk-in closet. The spa like owners bath offers a large shower with 3 plumbing fixtures, FREE STANDING TUB and double vanity. HARDWOODS THROUGHOUT. Two bedrooms in the rear of the home can both ...**

**Want to Know More
About This Home?**

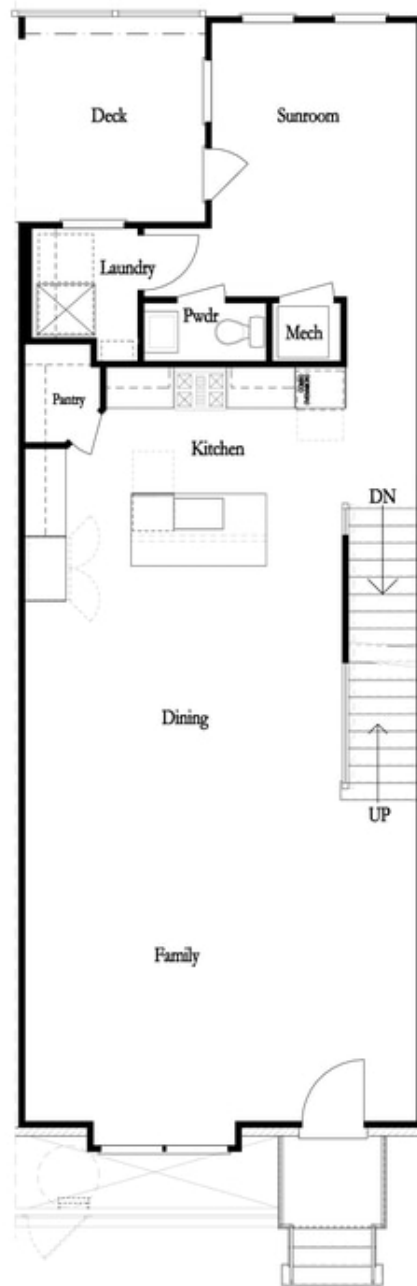
CONTACT OUR COMMUNITY SALES MANAGER
Call Us @ 470.436.2641



First Floor

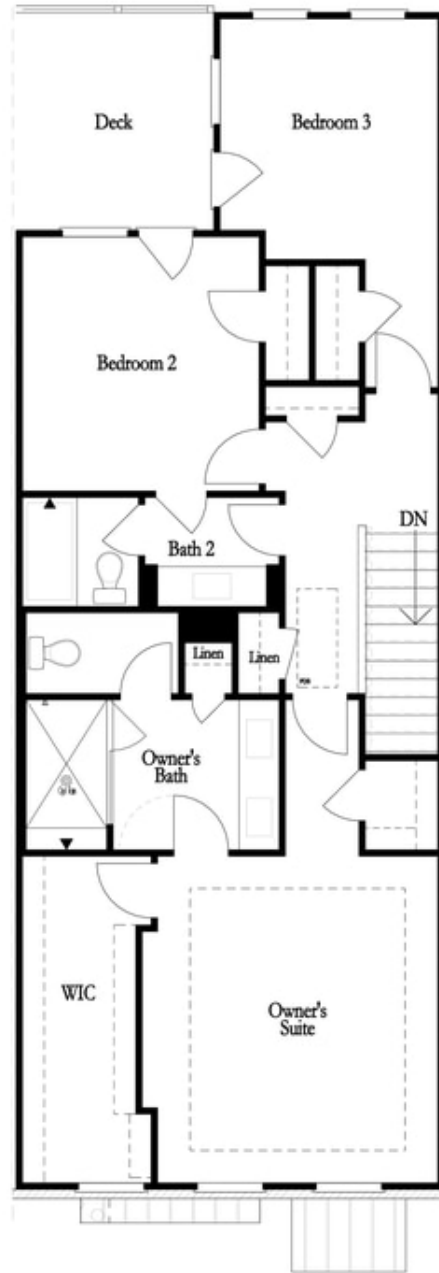
**Want to Know More
About This Home?**

CONTACT OUR COMMUNITY SALES MANAGER
Call Us @ 470.436.2641



**Want to Know More
About This Home?**

CONTACT OUR COMMUNITY SALES MANAGER
Call Us @ 470.436.2641



**Want to Know More
About This Home?**

CONTACT OUR COMMUNITY SALES MANAGER
Call Us @ 470.436.2641

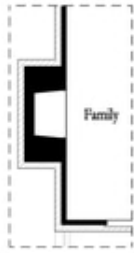


Left End
Opt. Sprinkler Room

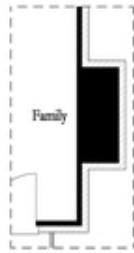


Right End
Opt. Sprinkler Room

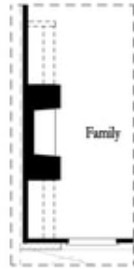
First Floor Options



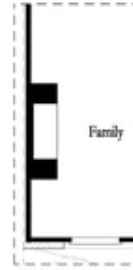
Opt. Exterior Fireplace



Opt. Faux Exterior
Fireplace



Opt. Fireplace



Opt. Linear Fireplace

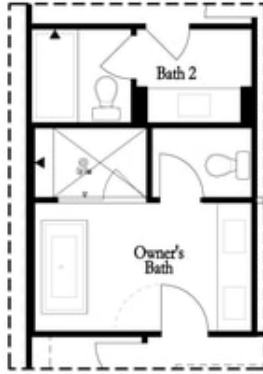
Second Floor Options

**Want to Know More
About This Home?**

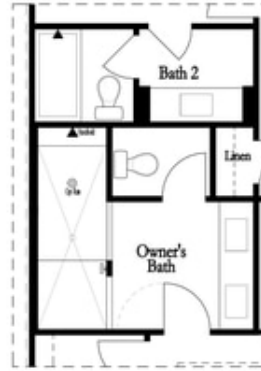
CONTACT OUR COMMUNITY SALES MANAGER
Call Us @ 470.436.2641

Options

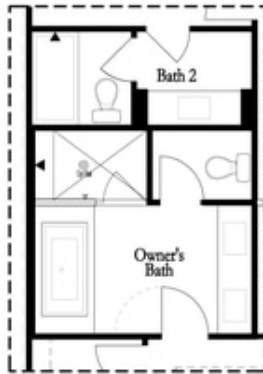
Third Floor Options



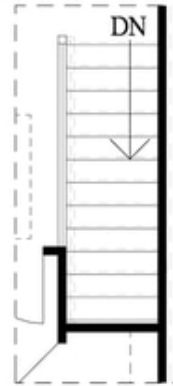
Opt. Freestanding
Tub/Shower Combo



Opt. Walk-Through Shower



Opt. Decked
Tub/Shower Combo



Opt. Open Rail

Want to Know More
About This Home?

CONTACT OUR COMMUNITY SALES MANAGER
Call Us @ 470.436.2641