



PRICED AT  
**\$883,255**

 2379 Sq Ft

 4 Beds

 3.5 Baths

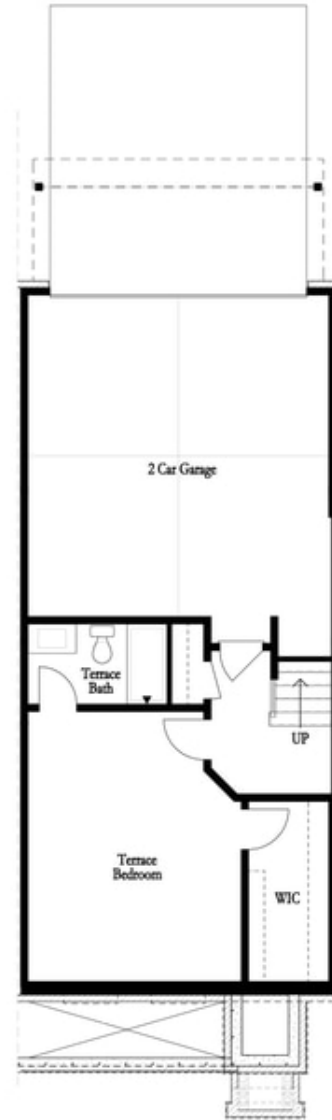
 2 Car Garage

 3.0 Story

New Home, New Year, New You! \*\*\*MOVE-IN READY!!!\*\*\* ~~~ \$30,000 to use ANY WAY YOU WANT on contracts written prior to 2/29/24 using one of our 5-Preferred Lenders and close in March '24~~~ Welcome to our exquisitely designed Benton END UNIT townhome, where sophistication meets modern luxury in a seamless blend of architectural innovation. This newly constructed masterpiece stands as a testament to superior craftsmanship and attention to detail, offering an unparalleled living experience. Let's walk through the lavish upgrades and distinctive features that define this gorgeous home. As you approach the entrance, be greeted by a landscaped front courtyard that sets the tone for the opulence within. The exterior showcases a harmonious fusion of contemporary design elements, from the sleek lines to the thoughtfully chosen materials, creating a striking first impression. Step inside, and you'll find yourself immersed in an atmosphere of refined elegance with hardwood floors flowing throughout. The open-concept layout seamlessly connects the living, dining, and kitchen areas, fostering a sense of spaciousness and unity. 10' ceilings and exquisite light fixtures illuminate the space, creating an ambiance that is both warm and inviting. Tucked away behind the kitchen, you will find a private, quiet space for a ...

Want to Know More  
About This Home?

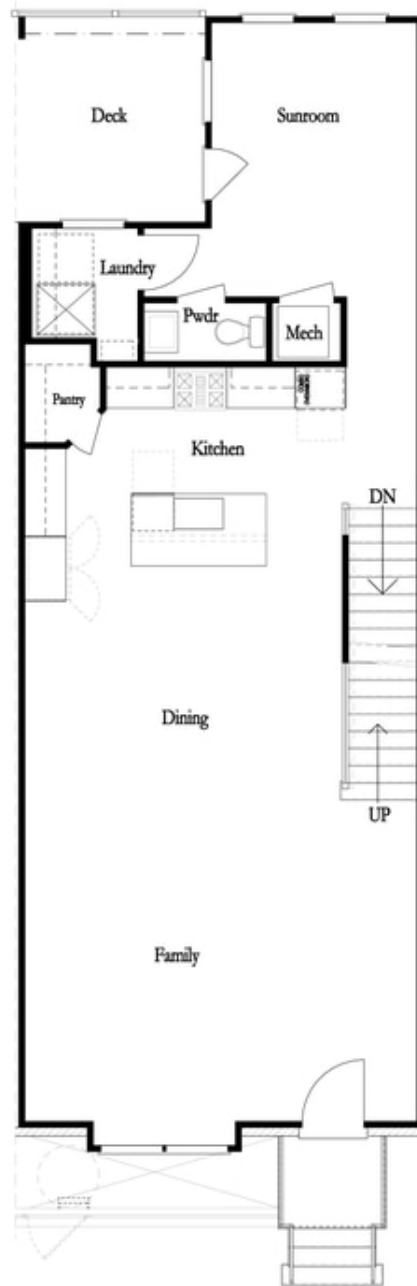
CONTACT OUR COMMUNITY SALES MANAGER  
Call Us @ 470.436.2641



First Floor

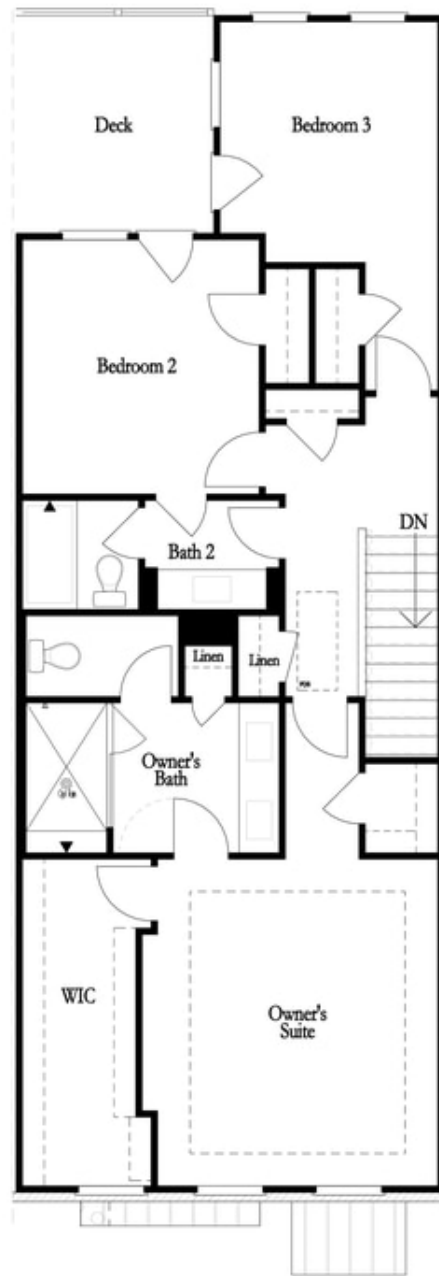
**Want to Know More  
About This Home?**

CONTACT OUR COMMUNITY SALES MANAGER  
Call Us @ 470.436.2641



**Want to Know More  
About This Home?**

CONTACT OUR COMMUNITY SALES MANAGER  
Call Us @ 470.436.2641



**Want to Know More  
About This Home?**

CONTACT OUR COMMUNITY SALES MANAGER  
Call Us @ 470.436.2641

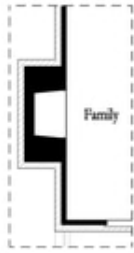


Left End  
Opt. Sprinkler Room

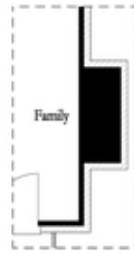


Right End  
Opt. Sprinkler Room

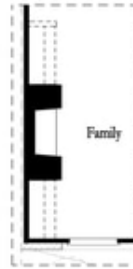
First Floor Options



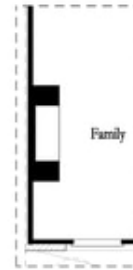
Opt. Exterior Fireplace



Opt. Faux Exterior  
Fireplace



Opt. Fireplace



Opt. Linear Fireplace

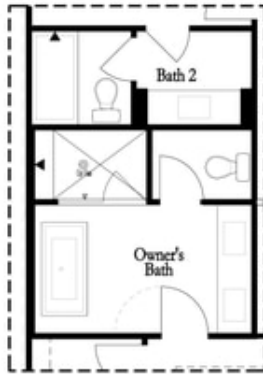
Second Floor Options

Want to Know More  
About This Home?

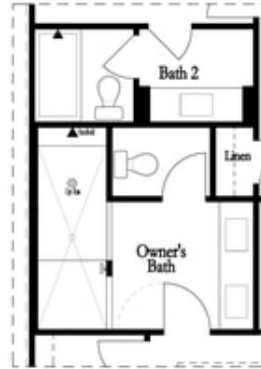
CONTACT OUR COMMUNITY SALES MANAGER  
Call Us @ 470.436.2641

Options

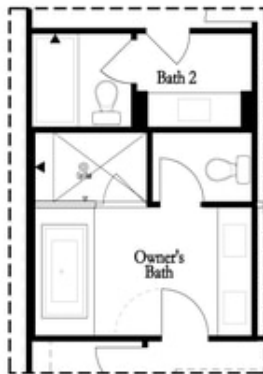
Third Floor Options



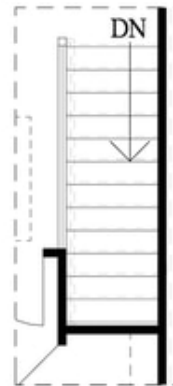
Opt. Freestanding  
 Tub/Shower Combo



Opt. Walk-Through Shower



Opt. Decked  
 Tub/Shower Combo



Opt. Open Rail

**Want to Know More  
 About This Home?**

CONTACT OUR COMMUNITY SALES MANAGER  
 Call Us @ 470.436.2641