



PRICED AT
\$522,670

 **1877 Sq Ft**

 **2 Beds**

 **2.0 Baths**

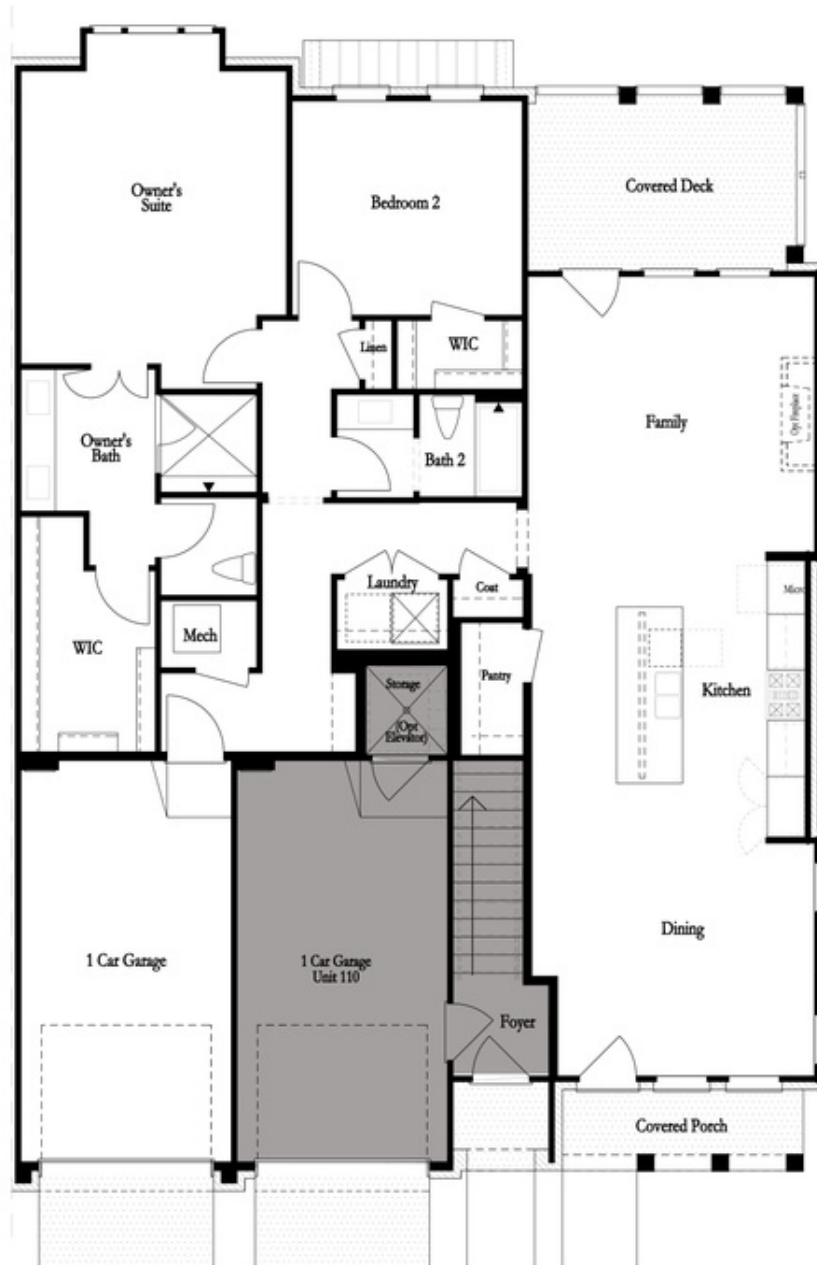
 **1 Car Garage**

 **1.0 Story**

Baldwin by The Providence Group. Can't say enough amazing things about this one-level living condo in the heart of Alpharetta! Welcome to the newest gated community in the heart of Alpharetta just steps from Avalon, Maxwell Retail & City Center. This community offers pool, pool house, neighborhood garden, dog park attached to the Alpha Loop surrounded by trees. Open concept one level living at its finest. Private front entrance w/covered porch & 1car garage w/driveway. Upgrades include quartz countertops, stainless steel gas appliances, 10'ceilings & oversized Owner's Suite w/huge Owner's walk-in closet. Gas fireplace in Family Room. Secondary Bedroom has Walk in Closet too! Rear covered deck to enjoy warm summer nights. You still have time to come and select your design package and upgrades! Home to be ready in Fall 2022. 1-2-10 warranty.

**Want to Know More
About This Home?**

CONTACT OUR COMMUNITY SALES MANAGER
Call Us @ 470.436.2641



Want to Know More
About This Home?

CONTACT OUR COMMUNITY SALES MANAGER
Call Us @ 470.436.2641



Want to Know More
About This Home?

CONTACT OUR COMMUNITY SALES MANAGER
Call Us @ 470.436.2641