



PRICED FROM
\$850,535

 2,155 Sq Ft

 3 Beds

 2.5 Baths

 2 Car Garage

 3.0 Story

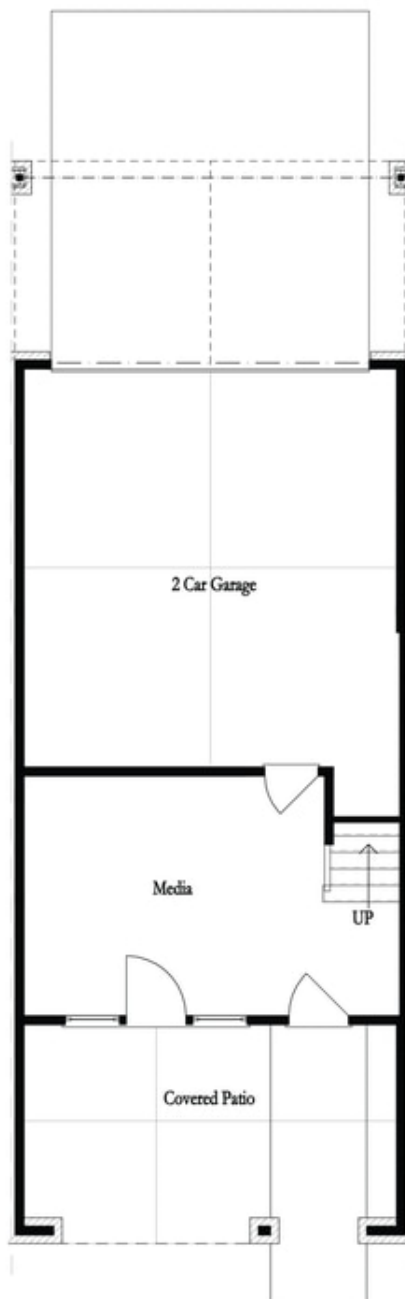
- Spacious Three Story Design with Open Main Level Layout
- Gourmet Kitchen with Island overlooking Dining and Family Room
- Owner's Suite and Private Bath with Dual Vanities and Over Size Walk-In Closet on Upper Level
- A Secondary Bedroom and Laundry on Upper Level
- Media Room and Covered Patio on Terrace Level
- Two Car Garage

[Read More Online](#)

Available Elevations



Bedford - Front Elevation

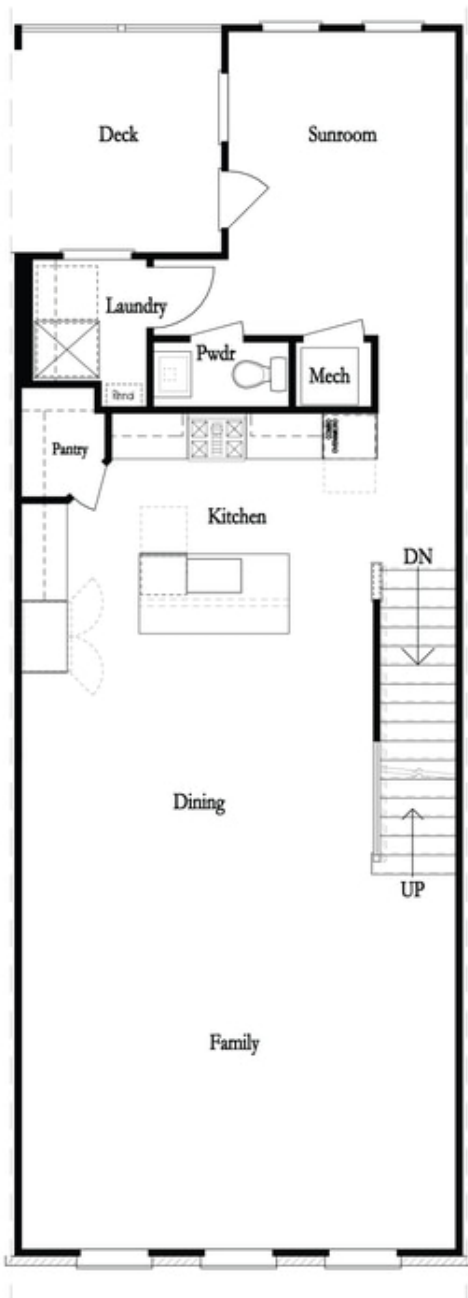


Want to Know More
About This Home?

CONTACT OUR NEW HOME NAVIGATOR

NONE

Call Us @ 470.436.2641

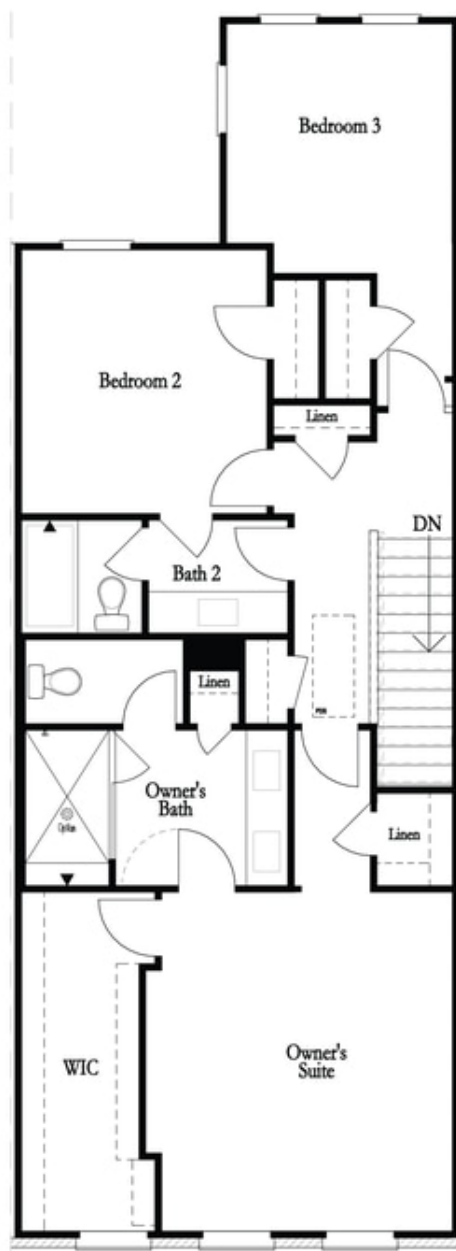


Want to Know More
About This Home?

CONTACT OUR NEW HOME NAVIGATOR

NONE

Call Us @ 470.436.2641

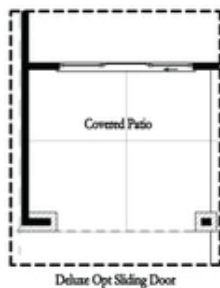


Want to Know More
About This Home?

CONTACT OUR NEW HOME NAVIGATOR

NONE

Call Us @ 470.436.2641



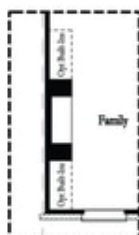
Deluxe Opt Sliding Door



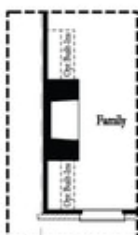
Deluxe Opt Patio Fireplace



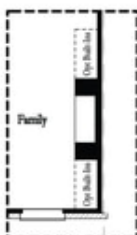
Deluxe Opt Fenced In Patio



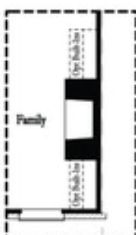
Deluxe Opt Linear Fireplace (Left Side)



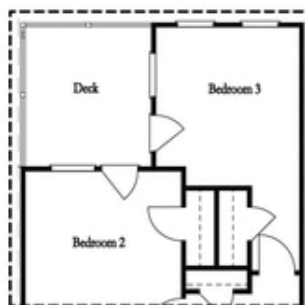
Deluxe Opt Fireplace (Left Side)



Deluxe Opt Linear Fireplace (Right Side)



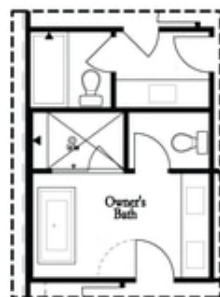
Deluxe Opt Fireplace (Right Side)



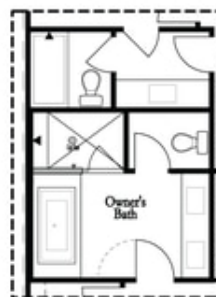
Deluxe Opt 2-Story Deck



Deluxe Opt Walk-Through Shower



Deluxe Opt Freestanding Tub/Shower Combo



Deluxe Opt Decked Tub/Shower Combo

Want to Know More
About This Home?

CONTACT OUR NEW HOME NAVIGATOR

NONE

Call Us @ 470.436.2641