



PRICED AT
\$482,150

 1213 Sq Ft

 2 Beds

 2.0 Baths

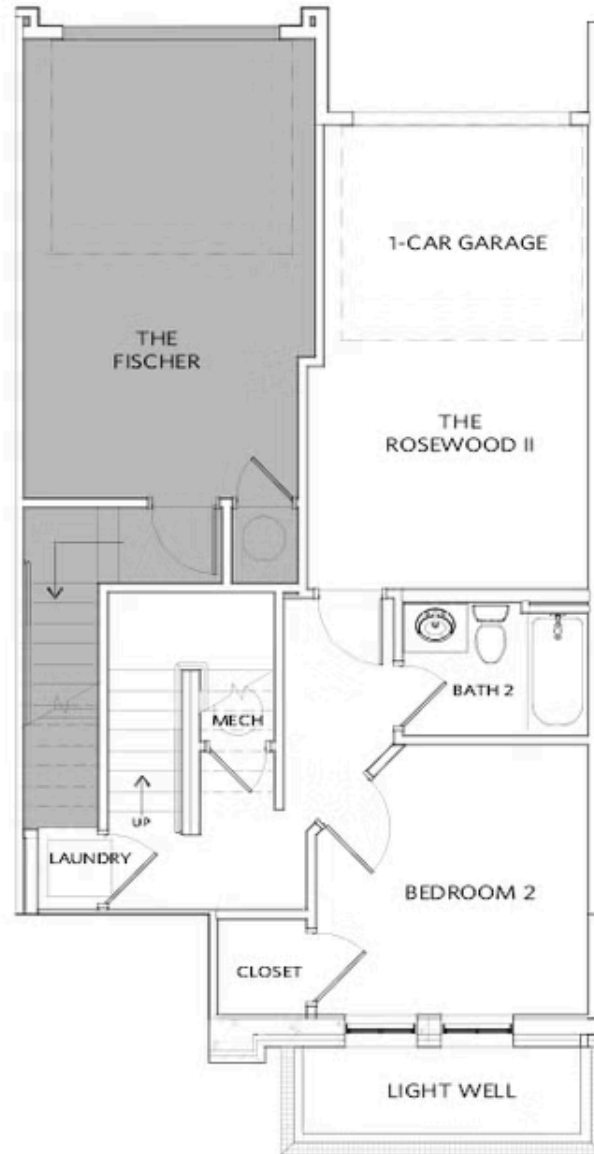
 1 Car Garage

 2.0 Story

Welcome to the Rosewood II at Brookside Reserve—where modern luxury meets effortless living in the heart of Alpharetta. This thoughtfully designed townhome offers a bright, open-concept layout perfect for today's lifestyle. The main living level features a spacious family room that flows seamlessly into a stylish kitchen with a large center island, creating the ideal space for entertaining or everyday living. A dedicated dining area leads to a private balcony—perfect for morning coffee or evening relaxation. Quartz countertops, GE stainless steel appliances, tile backsplash and 42" soft close cabinetry are just a few of the features this kitchen boasts. The owner's suite is conveniently located on the main level, offering a serene retreat complete with a spa-inspired bath featuring dual vanities, a soaking tub, separate shower, and a generous walk-in closet. The terrace level provides additional flexibility with a private secondary bedroom and full bath—ideal for guests, a home office, or multi-generational living. A one-car garage and laundry area add to the home's everyday convenience. Located in sought-after Brookside Reserve, Alpharetta's newest condominium community, residents enjoy easy access to Alpharetta's premier shopping, dining, and entertainment, along with top-rated schools and nearby parks. Experience low-maintenance living without compromising on style, comfort, ...

**Want to Know More
About This Home?**

CONTACT OUR COMMUNITY SALES MANAGER
Call Us @ 770.846.8220



Unit A Floor Plan Layout

Want to Know More
About This Home?

CONTACT OUR COMMUNITY SALES MANAGER
Call Us @ 770.846.8220



Unit A Floor Plan Layout

Want to Know More
About This Home?

CONTACT OUR COMMUNITY SALES MANAGER
Call Us @ 770.846.8220