








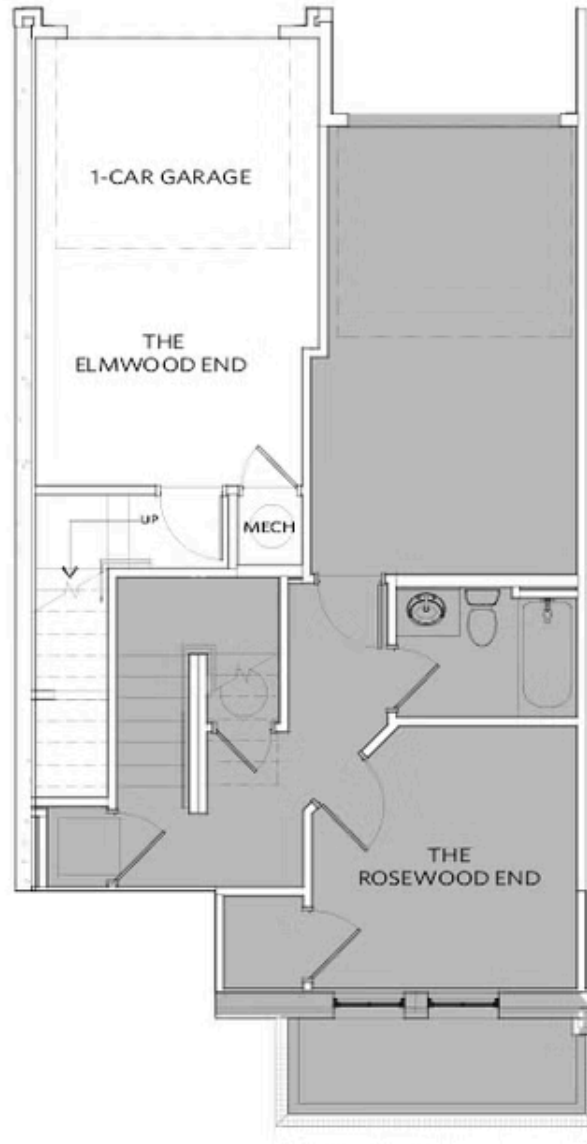
PRICED AT
\$562,400

-  1707 Sq Ft
-  2 Beds
-  2.0 Baths
-  1 Car Garage
-  3.0 Story

Welcome to the Elmwood End Unit at Brookside Reserve, a beautifully designed two-story townhome offering 2 bedrooms, 2 bathrooms, and 1,707 square feet of thoughtfully crafted living space. This light-filled end unit features an open-concept main level with a seamless flow between the kitchen, dining, and living areas—perfect for both everyday living and entertaining. The chef-inspired kitchen showcases sleek soft close 42" cabinetry, stainless steel appliances, a large island with seating, quartz countertops, tiled backsplash and designer pendant lighting, all complemented by a stylish tile backsplash and modern finishes. The spacious living area is highlighted by clean architectural lines, abundant natural light, and upscale finishes throughout, creating a warm and inviting atmosphere. Just beyond, enjoy access to outdoor pool views that enhance the home's airy and bright feel. Upstairs, the generous owner's suite serves as a private retreat, complete with a sitting area, spa-like bathroom and refined design elements. An additional bedroom and full bath provide flexibility for guests, a home office, or additional living needs. A sitting room on the main level is added bonus space for a den or cozy reading nook! Throughout the home, you will find premium flooring, curated lighting, and contemporary design touches that elevate the ...

**Want to Know More
About This Home?**

CONTACT OUR COMMUNITY SALES MANAGER
Call Us @ 770.846.8220



Unit D Floor Plan Layout

Want to Know More
About This Home?

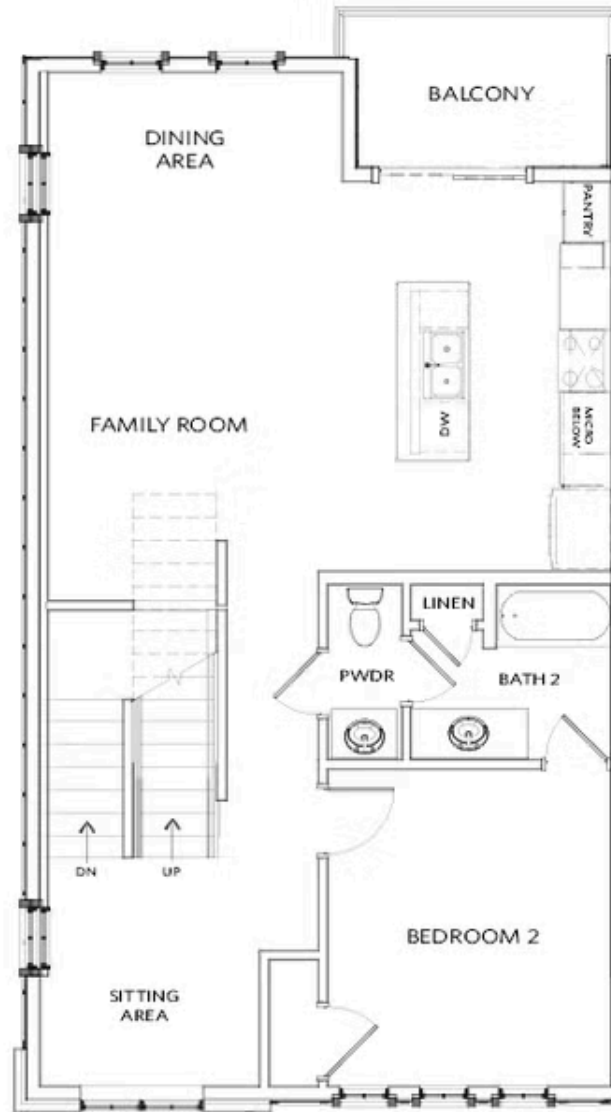
CONTACT OUR COMMUNITY SALES MANAGER
Call Us @ 770.846.8220



Unit D Floor Plan Layout

Want to Know More
About This Home?

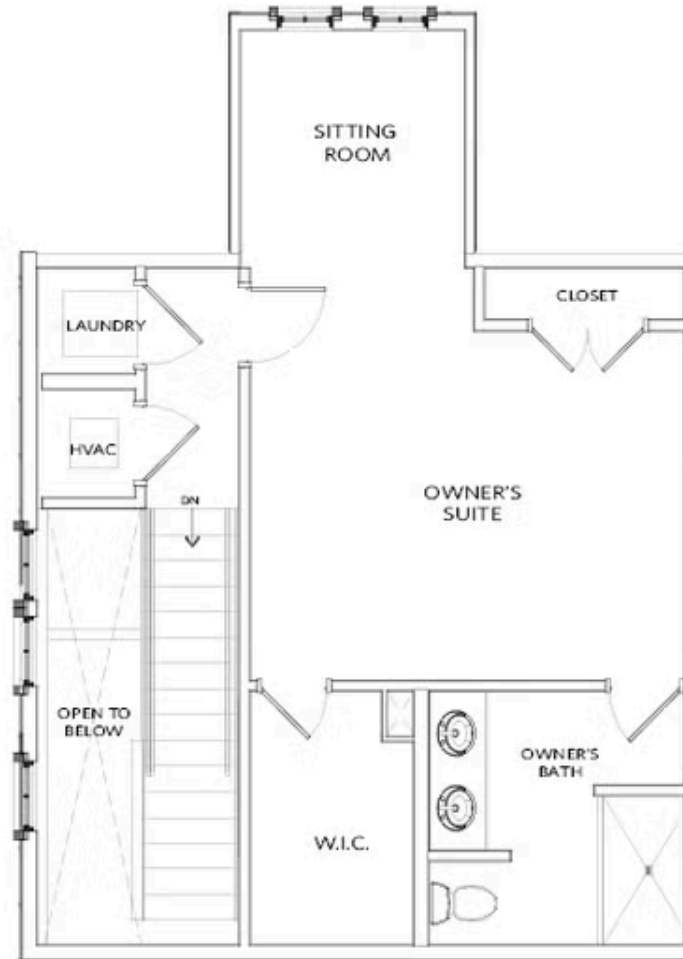
CONTACT OUR COMMUNITY SALES MANAGER
Call Us @ 770.846.8220



Unit D Floor Plan Layout

Want to Know More
About This Home?

CONTACT OUR COMMUNITY SALES MANAGER
Call Us @ 770.846.8220



Unit D Floor Plan Layout

Want to Know More
About This Home?

CONTACT OUR COMMUNITY SALES MANAGER
Call Us @ 770.846.8220