








PRICED FROM
\$489,900

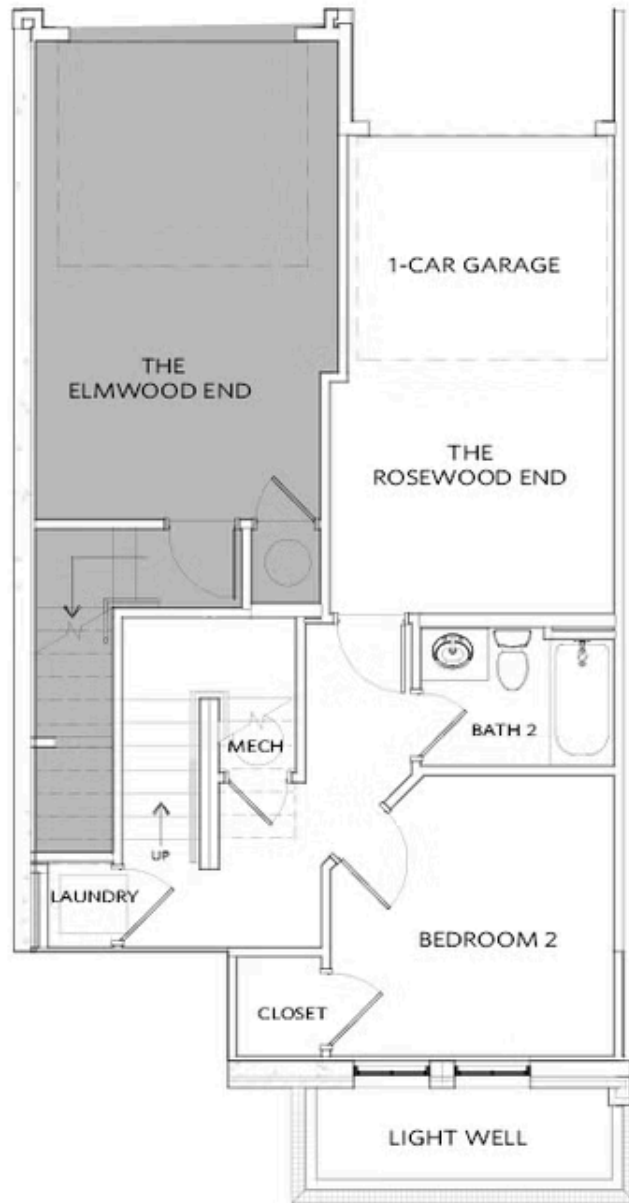
-  1,209 Sq Ft
-  2 Beds
-  2 Baths
-  1 Car Garage
-  2.0 Story

- Desirable end-unit positioning offering added privacy and natural light
- Two-story layout separating living and bedroom areas for comfort and functionality
- Open-concept main level with spacious family room and dedicated dining area
- Well-appointed kitchen featuring pantry storage, dishwasher, and built-in microwave space
- Private owner's suite with en-suite bath and large walk-in
- Secondary bedroom with adjacent full bath—ideal for guests or home office
- Convenient in-unit laundry and mechanical storage
- Outdoor living spaces including a private balcony

[Read More Online](#)

Available Elevations





Unit BE Floor Plan Layout

Want to Know More
About This Home?

CONTACT OUR COMMUNITY SALES MANAGER
Call Us @ 770.846.8220



Unit BE Floor Plan Layout

Want to Know More
About This Home?

CONTACT OUR COMMUNITY SALES MANAGER
Call Us @ 770.846.8220