








PRICED FROM
\$489,900

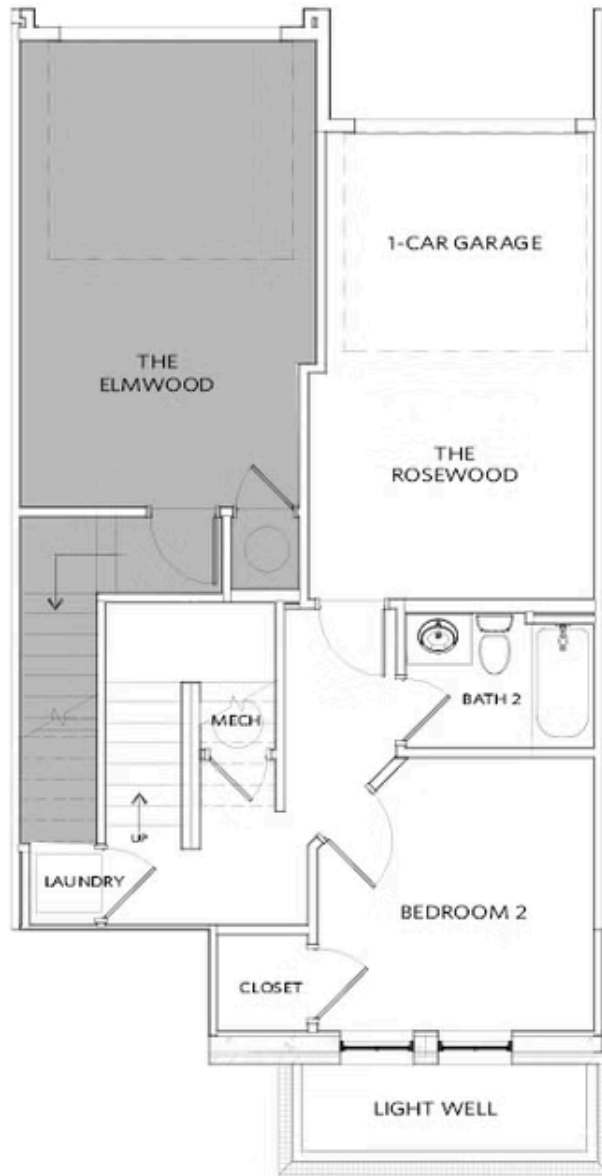
-  1,212 Sq Ft
-  2 Beds
-  2 Baths
-  1 Car Garage
-  2.0 Story

- Open-concept main level with spacious family room and dining area
- Modern kitchen layout with pantry and convenient appliance placement
- Private owner's suite featuring en-suite bath with a shower, soaking tub, and a large walk-in closet
- Secondary bedroom ideal for guests, office, or flex use
- Dedicated laundry area for added convenience
- Outdoor living with a balcony off the dining area
- One-car garage with additional storage/mechanical space
- Multi-level design with terrace, entry, and main living area upstairs

[Read More Online](#)

Available Elevations





Unit B Floor Plan Layout

Want to Know More
About This Home?

CONTACT OUR COMMUNITY SALES MANAGER
Call Us @ 770.846.8220



Unit B Floor Plan Layout

Want to Know More
About This Home?

CONTACT OUR COMMUNITY SALES MANAGER
Call Us @ 770.846.8220