




PRICED AT  
**\$907,025**

 2105 Sq Ft

 3 Beds

 3.5 Baths

 2 Car Garage

 3.0 Story

~~~ ELEVATE YOUR LIFESTYLE here at Byers Park by The Providence Group in Downtown Alpharetta ~~~ Receive \$5,000 towards closing cost when using one of our 5-preferred lenders!! Embark on your new lifestyle in this MOVE-IN-READY Chamberlain Townhome. Mosey on in through your FENCE IN YARD just off the Alpha Loop. A showstopper the moment you enter with tall ceilings, bright light pouring into the space, open concept living at its finest and that's just to start. Upgraded design features include porcelain farmhouse sink, cabinets to the ceiling, Cambria quartz countertops just to name a few. There is a warm wheat design pallet running through the home just perfect to bring in any colour your design heart imagines. Cozy up in your Family Room to your gas fireplace to warm up on those chilly Georgia nights. Your Sunroom is perfect as office space, additional lounge seating for your Family Room or set up a breakfast table for dining. Step off your deck with upgraded Trek flooring and enjoy your morning coffee. Lets go upstairs where your Owner's offers a Sitting Room for extra lounging and deck to gaze at the stars. Your friends and family will be floored when they ...

**Want to Know More  
About This Home?**

CONTACT OUR COMMUNITY SALES MANAGER

**NONE**

Call Us @ 470.248.2777



Elevation R

Want to Know More  
About This Home?

CONTACT OUR COMMUNITY SALES MANAGER

NONE

Call Us @ 470.248.2777



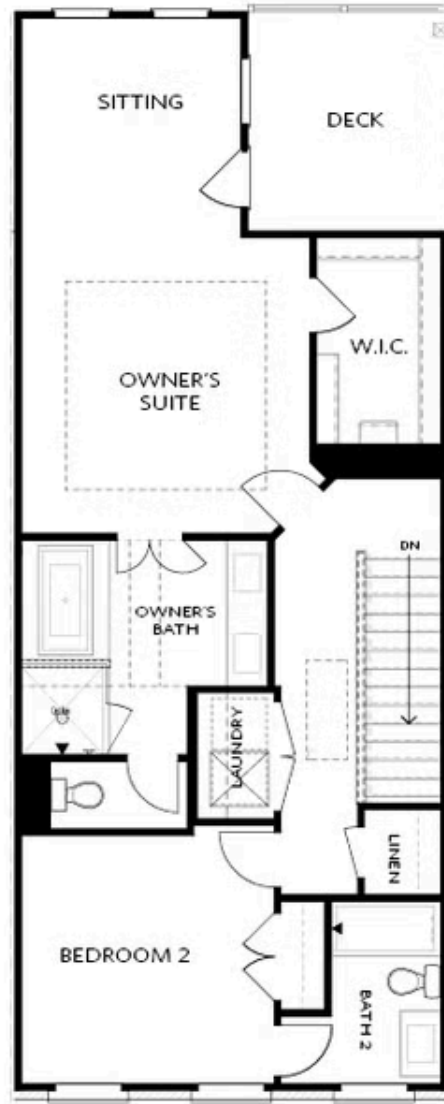
Elevation R

Want to Know More  
About This Home?

CONTACT OUR COMMUNITY SALES MANAGER

NONE

Call Us @ 470.248.2777



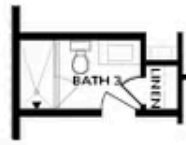
Elevation R

Want to Know More  
About This Home?

CONTACT OUR COMMUNITY SALES MANAGER

**NONE**

Call Us @ 470.248.2777



OPT Shower

**BASEMENT**



OPT Linear Fireplace



OPT Fireplace

**SECOND FLOOR**



OPT Open Rail



OPT Walk-Through Shower



OPT Freestanding Tub/Shower Combo

**Want to Know More  
 About This Home?**

CONTACT OUR COMMUNITY SALES MANAGER

**NONE**

Call Us @ 470.248.2777