








PRICED AT
\$850,460

-  2117 Sq Ft
-  3 Beds
-  3.5 Baths
-  2 Car Garage
-  3.0 Story

Elevate your Savings!! Enjoy \$40,000 Promotion AND \$10,000 in closing costs for only a few more days. Come in before the incentives change.... This promotion can be applied towards a price reduction, closing costs, rate buydown and more....giving you the flexibility to save where it matters most. ** This price shows the 40k be taken off the listed price** Discover The Chamberlain by the Providence Group- This home features 3 bedroom, 3.5 bath with 2 car garages and will be ready for closing in March/April 2026. The Chamberlain offers an open concept plan where architectural design meets timeless sophistication, featuring 10-foot ceilings and hard surface flooring on the main level, stairs and hallways, 9-foot ceilings on the terrace and 3rd levels. Elevated all brick exteriors with charming brownstone and terrace styles front entrances, creating an exquisite and welcoming feel. The spacious and stunning kitchen layout showcases GE stainless steel appliances with slide-in gas ranges with stainless steel vent hoods, 42" stacked cabinets with upgraded backsplash options, and oversized kitchen islands with upgraded Quartz tops. The spacious dining room/ family room space is ready for you to add a bar area complete with cabinets, floating shelves and beverage refrigerator for a ...

**Want to Know More
About This Home?**

CONTACT OUR COMMUNITY SALES MANAGER

NONE

Call Us @ 470.248.2777



Elevation R

Want to Know More
About This Home?

CONTACT OUR COMMUNITY SALES MANAGER

NONE

Call Us @ 470.248.2777



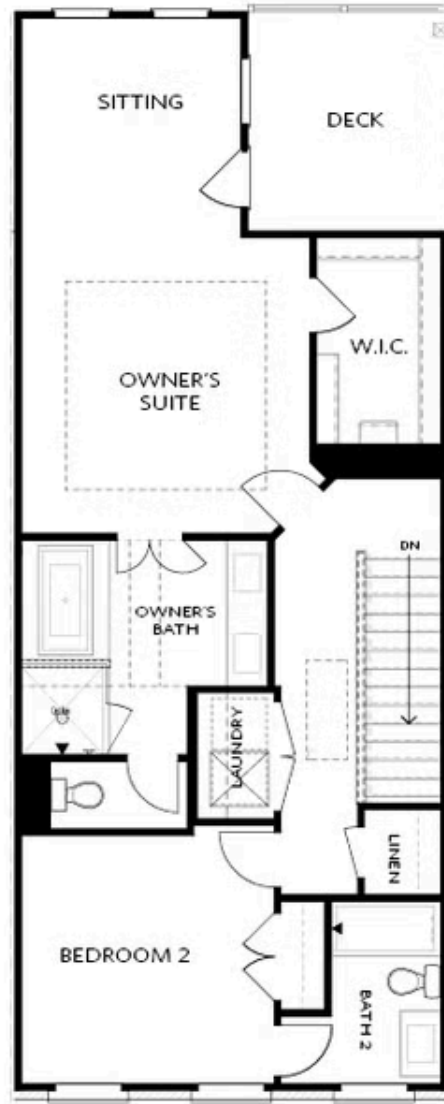
Elevation R

Want to Know More
About This Home?

CONTACT OUR COMMUNITY SALES MANAGER

NONE

Call Us @ 470.248.2777



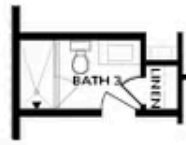
Elevation R

Want to Know More
About This Home?

CONTACT OUR COMMUNITY SALES MANAGER

NONE

Call Us @ 470.248.2777



OPT Shower

BASEMENT



OPT Linear Fireplace



OPT Fireplace

SECOND FLOOR



OPT Open Rail



OPT Walk-Through Shower



OPT Freestanding Tub/Shower Combo

**Want to Know More
 About This Home?**

CONTACT OUR COMMUNITY SALES MANAGER

NONE

Call Us @ 470.248.2777