



PRICED AT
\$855,705

 2117 Sq Ft

 3 Beds

 3.5 Baths

 2 Car Garage

 3.0 Story

~~~ ELEVATE YOUR LIFESTYLE here at Byers Park in Downtown Alpharetta ~~~ \$5,000 towards closing cost when using one of our 5-preferred lenders. Discover The Chamberlain by The Providence Group. MOVE-IN READY ~~~ This home features 3 bedrooms, 3.5 baths, with FENCED FRONT YARD and a 2-car garage. The Chamberlain offers an open-concept plan where architectural design meets timeless sophistication, featuring 10-foot ceilings and hard-surface flooring on the main level, stairs and hallways, 9-foot ceilings on the terrace and 3rd levels. Elevated all brick exteriors with charming brownstone styles front entrance creating an exquisite and welcoming feel. Beautiful sun-kissed hardwood flooring welcomes you to the spacious, open-concept main-level living space. Stunning kitchen layout showcases GE Profile stainless steel appliances with slide-in gas range, stainless steel vent hood, 42" stacked Bell cabinets, White Morningside Color with oversized kitchen island and upgraded Calacatta Miraggio Gold Quartz countertops, and upgraded 3 x 8 Rice backsplash stacked straight and white farm sink and gold detail finishes. The dining room space is open and flows into the family room, offering plenty of room to showcase a larger dining set or to add a bar area, complete with cabinets, floating shelves, and a beverage refrigerator, making ...

**Want to Know More  
About This Home?**

CONTACT OUR COMMUNITY SALES MANAGER

**NONE**

Call Us @ 470.248.2777



Elevation R

Want to Know More  
About This Home?

CONTACT OUR COMMUNITY SALES MANAGER

NONE

Call Us @ 470.248.2777



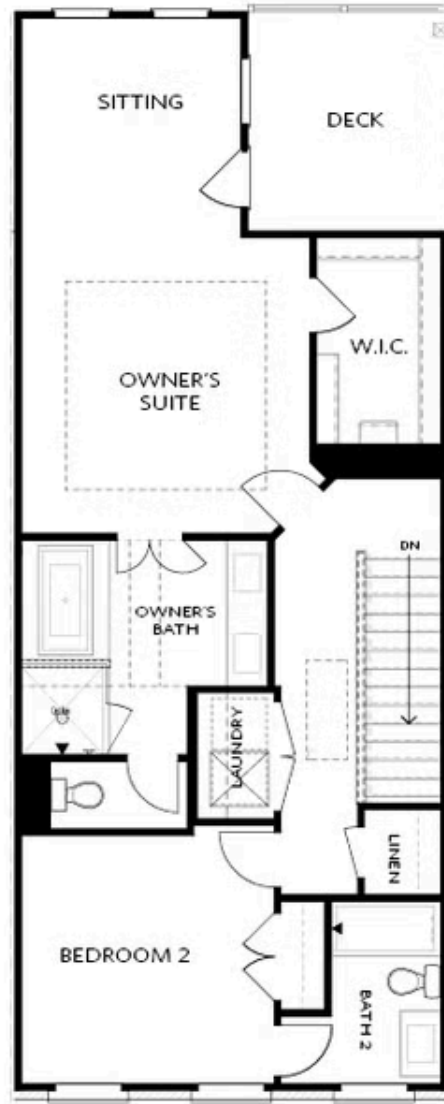
Elevation R

Want to Know More  
About This Home?

CONTACT OUR COMMUNITY SALES MANAGER

NONE

Call Us @ 470.248.2777



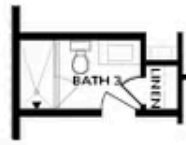
Elevation R

Want to Know More  
About This Home?

CONTACT OUR COMMUNITY SALES MANAGER

**NONE**

Call Us @ 470.248.2777



OPT Shower

**BASEMENT**



OPT Linear Fireplace



OPT Fireplace

**SECOND FLOOR**



OPT Open Rail



OPT Walk-Through Shower



OPT Freestanding Tub/Shower Combo

**Want to Know More  
 About This Home?**

CONTACT OUR COMMUNITY SALES MANAGER

**NONE**

Call Us @ 470.248.2777