





PRICED AT
\$898,410

-  2105 Sq Ft
-  3 Beds
-  3.5 Baths
-  2 Car Garage
-  3.0 Story

Elevate your Savings!! Enjoy \$40,000 Promotion AND \$10,000 in closing costs for only a few more days. Come in before the incentives change.... This promotion can be applied towards a price reduction, closing costs, rate buydown and more....giving you the flexibility to save where it matters most. This price shows the 40k be taken off the listed price. Discover The Chamberlain plan by the Providence Group- 3 bedroom, 3.5 bath with 2 car garages. This home is nearly finished and will be ready for closing March/April 2026. Byers Park is Alpharetta's newest townhome community by The Providence Group!!! The Chamberlain presents an open-concept plan where modern design meets timeless sophistication, featuring 10-foot ceiling height and hard-surface flooring on the main level, stairs and hallways, and 9-foot ceilings on the terrace and 3rd levels. Elevated all brick exterior with charming brownstone front door entrance into the main living level. As you first enter you are welcomed by a stunning kitchen layout showcasing GE Profile stainless steel appliances with slide-in gas ranges with stainless steel vent hood. Elevated kitchen finishes include 42" painted stacked cabinets and oversized island with upgraded backsplash and Calacatta Monaco Quartz tops. The spacious and open dining area ...

**Want to Know More
About This Home?**

CONTACT OUR COMMUNITY SALES MANAGER

NONE

Call Us @ 470.248.2777



Elevation R

Want to Know More
About This Home?

CONTACT OUR COMMUNITY SALES MANAGER

NONE

Call Us @ 470.248.2777



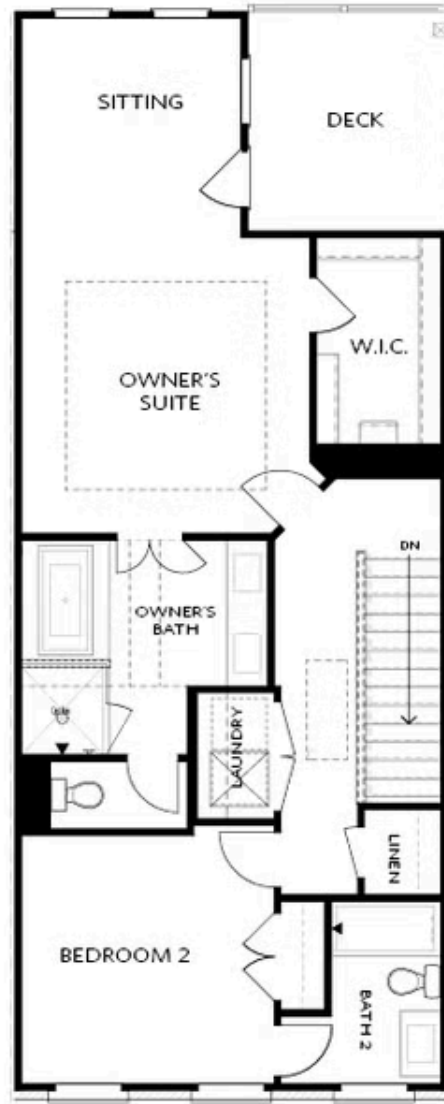
Elevation R

Want to Know More
About This Home?

CONTACT OUR COMMUNITY SALES MANAGER

NONE

Call Us @ 470.248.2777



Elevation R

Want to Know More
About This Home?

CONTACT OUR COMMUNITY SALES MANAGER

NONE

Call Us @ 470.248.2777



Want to Know More
 About This Home?

CONTACT OUR COMMUNITY SALES MANAGER

NONE

Call Us @ 470.248.2777