




PRICED AT  
**\$951,400**

 2105 Sq Ft

 3 Beds

 3.5 Baths

 2 Car Garage

 3.0 Story

"New Year, NEW HOME " Enjoy \$40,000 Promotion on contracts written by end of January. This promotion can be applied towards a price reduction, closing costs, rate buydown and more giving you the flexibility to save where it matters most. Ends January 31, 2026. Discover The Chamberlain by the Providence Group- This END UNIT home is ready for a quick move in. BYERS PARK -the newest Downtown Alpharetta Community is located just a short walk to the heart of downtown Alpharetta. This exquisite community features 24 beautifully designed townhomes with 2-car garages. Blending urban sophistication with suburban charm, this boutique enclave offers residents walkable access to the area's top dining, shopping, and entertainment, just minutes from Avalon and steps from the Alpha Loop Trail. These thoughtfully crafted homes feature open-concept layouts with 10-foot ceilings, oversized windows, and upscale finishes throughout. Each residence features 3 bedrooms, 3.5 bathrooms, and a 2-car garage, along with flexible ground-level space ideal for a home office, gym, or guest suite. The main living area is anchored by a sleek, ventless linear fireplace that adds warmth and style without the hassle. The chef's kitchen is the centerpiece, boasting soft-close cabinetry, quartz countertops, and GE stainless-steel appliances. ...

Want to Know More  
About This Home?

CONTACT OUR COMMUNITY SALES MANAGER  
Call Us @ 470.248.2777



Elevation R

Want to Know More  
About This Home?

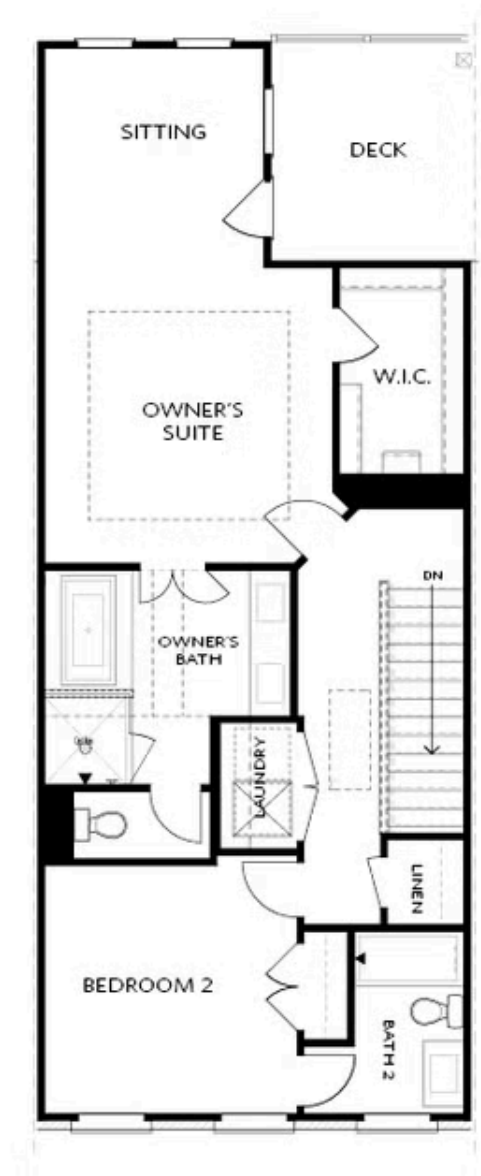
CONTACT OUR COMMUNITY SALES MANAGER  
Call Us @ 470.248.2777



Elevation R

Want to Know More  
About This Home?

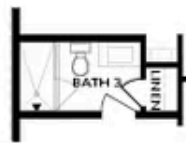
CONTACT OUR COMMUNITY SALES MANAGER  
Call Us @ 470.248.2777



Elevation R

Want to Know More  
About This Home?

CONTACT OUR COMMUNITY SALES MANAGER  
Call Us @ 470.248.2777



OPT Shower

BASEMENT



OPT Linear Fireplace

SECOND FLOOR



OPT Fireplace



OPT Open Rail



OPT Walk-Through Shower



OPT Freestanding Tub/Shower Combo

Want to Know More  
About This Home?

CONTACT OUR COMMUNITY SALES MANAGER  
Call Us @ 470.248.2777