




PRICED AT
\$893,700

 2105 Sq Ft

 3 Beds

 3.5 Baths

 2 Car Garage

 3.0 Story

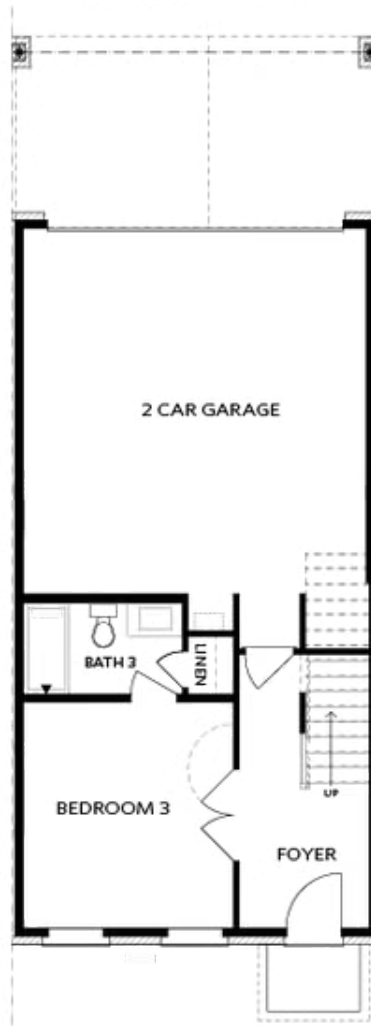
~~~ ELEVATE YOUR LIFESTYLE here at Byers Park in Downtown Alpharetta ~~~ \$5,000 towards closing cost when using one of our 5-preferred lenders. Discover The Childress by The Providence Group. READY BEGINNING OF 2027! ~~~ LIMITED TIME ONLY / COME VISIT OUR DESIGN STUDIO AND PICK YOUR FINISHES BEFORE IT'S TOO LATE! ~~~ This END UNIT All brick exteriors with charming terrace style front entrances creates an exquisite and welcoming feel. Architectural design meets timeless sophistication, featuring 10-foot ceilings and hard-surface flooring on the main level, stairs and hallways. The spacious and stunning kitchen layout showcases GE stainless steel appliances including a slide-in gas range and stainless steel vent hood. Large covered balcony off your Kitchen is begging for rocking chairs to sit on to enjoy some fresh air while you watch the birds fly by into your wooded views. With it's open concept living, you'll have a straight shot view into your Dining Room and Family Room great for entertaining and relaxing. An upgraded Linear Fireplace in your Family Room will help you warm up on those cold Georgia nights. Step off your Sunroom onto your deck with Trex flooring and iron rails perfect for morning coffee. Walk down ...

**Want to Know More  
About This Home?**

CONTACT OUR COMMUNITY SALES MANAGER

**NONE**

Call Us @ 470.248.2777



FIRST FLOOR

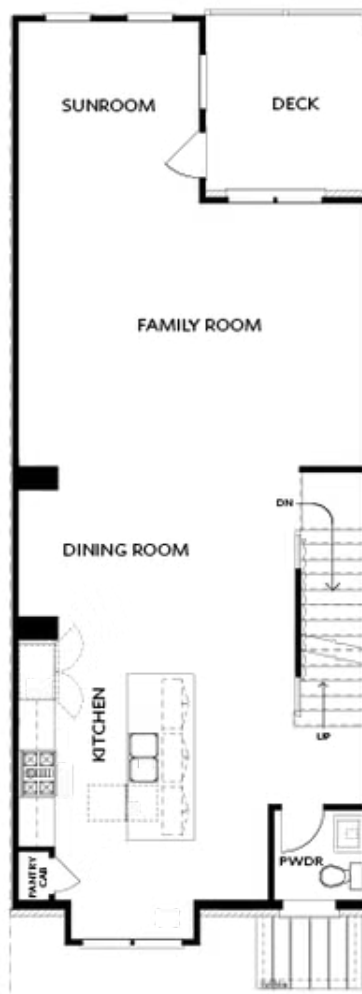
Elevation R

Want to Know More  
About This Home?

CONTACT OUR COMMUNITY SALES MANAGER

NONE

Call Us @ 470.248.2777



SECOND FLOOR

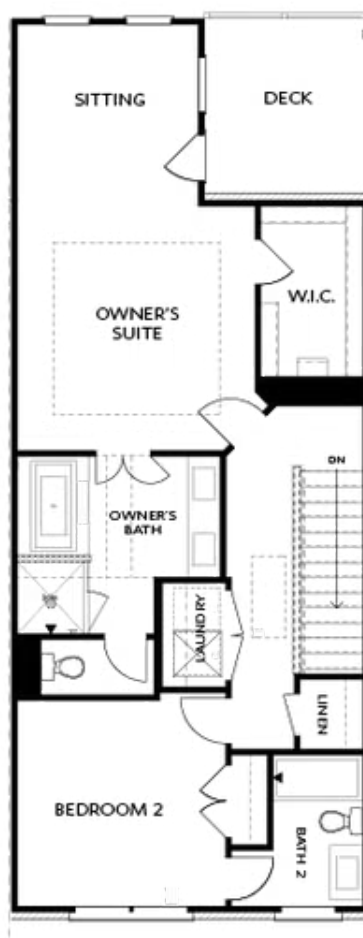
Elevation R

Want to Know More  
About This Home?

CONTACT OUR COMMUNITY SALES MANAGER

NONE

Call Us @ 470.248.2777



THIRD FLOOR

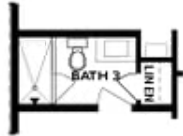
Elevation T

Want to Know More  
About This Home?

CONTACT OUR COMMUNITY SALES MANAGER

NONE

Call Us @ 470.248.2777



OPT Shower

**BASEMENT**



OPT Linear Fireplace



OPT Fireplace

**SECOND FLOOR**



OPT Open Rail



OPT Walk-Through Shower



OPT Freestanding Tub/Shower Combo

**THIRD FLOOR**

**OPTIONS**

Want to Know More  
 About This Home?

CONTACT OUR COMMUNITY SALES MANAGER

**NONE**

Call Us @ 470.248.2777