




PRICED FROM  
**\$819,900**

 2,105 - 2,117 Sq Ft

 3 Beds

 3.5 Baths

 2 Car Garage

 3.0 Story

- 3 Stories
- Bedroom with Full Bath on Terrace Level & Walk-In Closet
- Gourmet Kitchen with a Large Island - Seating for 4
- Open Concept - Kitchen Overlooks the Dining Room & Family Room
- Sunroom with Deck on Main Level
- Massive Owner's Suite with Private Bath, Dual Vanities and Large Walk-In Closet
- Personal Deck of Owner's Sitting Room

• Two Car Garage  
[Read More Online](#)

## Available Elevations





Elevation R

Want to Know More  
About This Home?

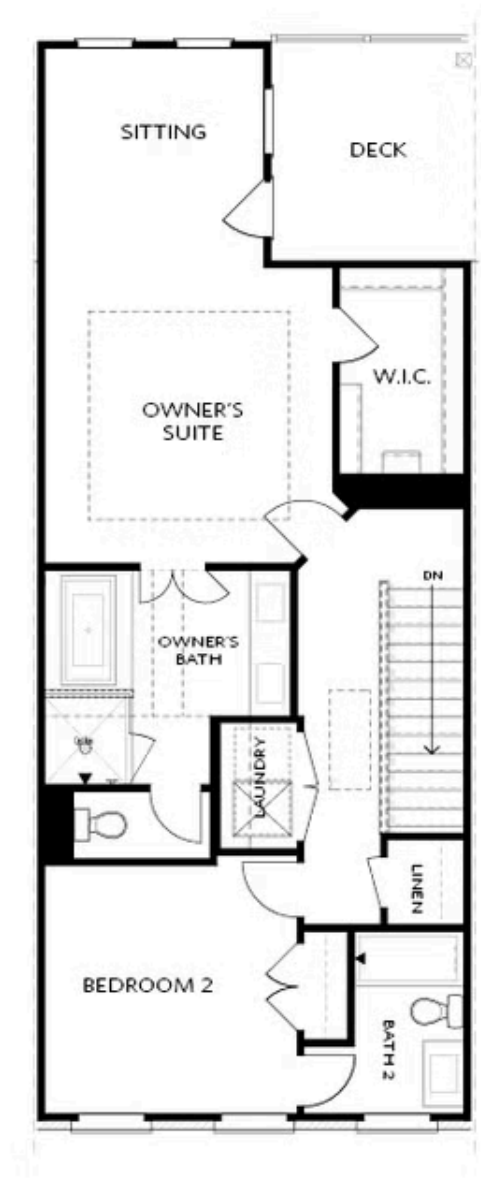
CONTACT OUR COMMUNITY SALES MANAGER  
Call Us @ 470.248.2777



Elevation R

Want to Know More  
About This Home?

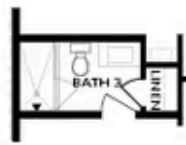
CONTACT OUR COMMUNITY SALES MANAGER  
Call Us @ 470.248.2777



Elevation R

Want to Know More  
About This Home?

CONTACT OUR COMMUNITY SALES MANAGER  
Call Us @ 470.248.2777



OPT Shower

BASEMENT



OPT Linear Fireplace

SECOND FLOOR



OPT Fireplace



OPT Open Rail



OPT Walk-Through Shower



OPT Freestanding Tub/Shower Combo

Want to Know More  
About This Home?

CONTACT OUR COMMUNITY SALES MANAGER  
Call Us @ 470.248.2777