



PRICED AT
\$726,150

 2502 Sq Ft

 4 Beds

 3.0 Baths

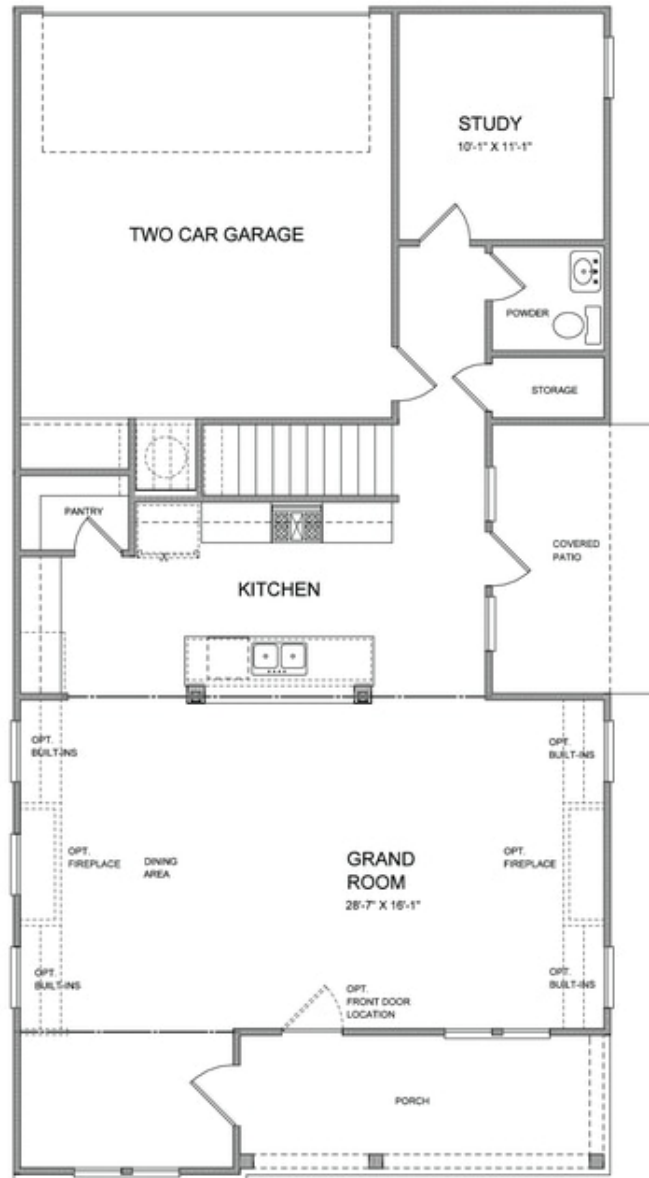
 2 Car Garage

 2.0 Story

Owens D (Home Site 278) TO BE BUILT by The Providence Group! Buyers have time to go to our Design Studio to make their own Design Selections if they hurry!! Open plan features Kitchen with massive island & walk in pantry overlooking Family Room w/Fireplace & Dining Room as well as Covered Patio. Guest Retreat on main tucked at rear of the home for privacy. Upstairs is oversized Owner's Bed w/His& Hers Closets, Spa-like bath including walk-in shower & two more bedrooms that share jack & jill bath. Estimated completion Fall 2022 Sought after Denmark High School Cluster! Fantastic gated community with 13 Acre Central Park with Walking Trail, Clubhouse, Pool, Tennis, Playgrounds and HOA Maintained Lawns. Best of all, this well-situated location means you can take advantage of low Forsyth taxes while enjoying a fantastic Alpharetta lifestyle! Less than two miles to the New Halcyon! and 4 miles from Alpharetta's thriving Downtown or the beckoning streets of Avalon. \$5,000 closing costs with use of Green Brick Mortgage for buyer's financing. 1-2-8 year Warranty.

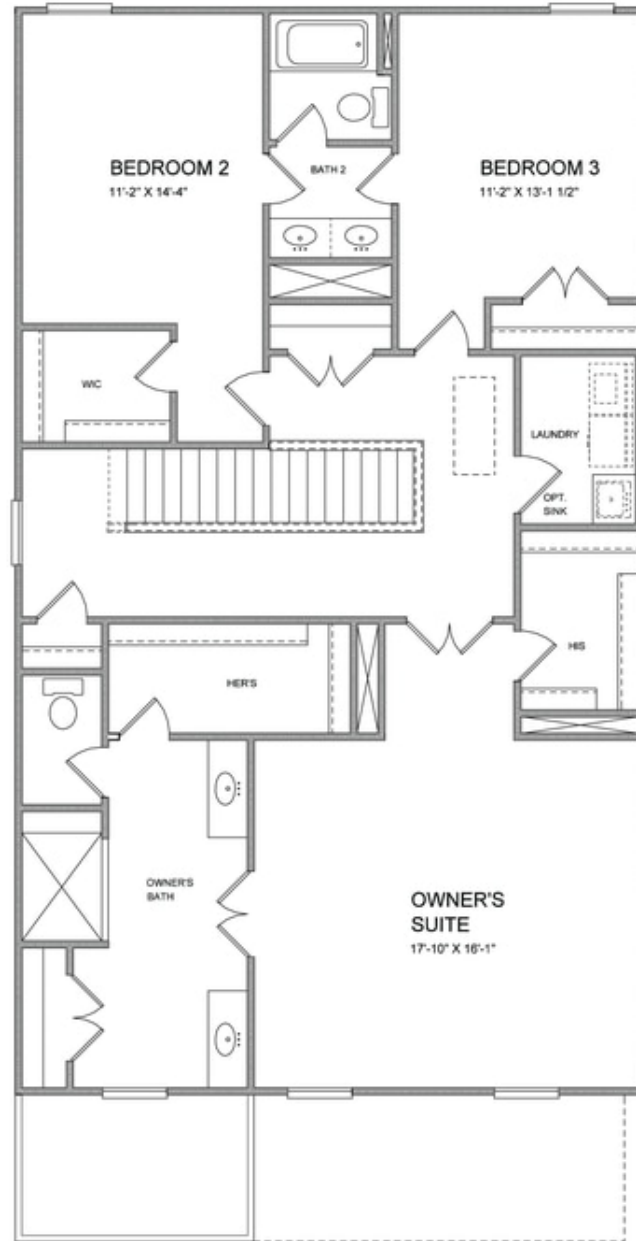
**Want to Know More
About This Home?**

CONTACT OUR COMMUNITY SALES MANAGER
Call Us @ (770) 521-2151



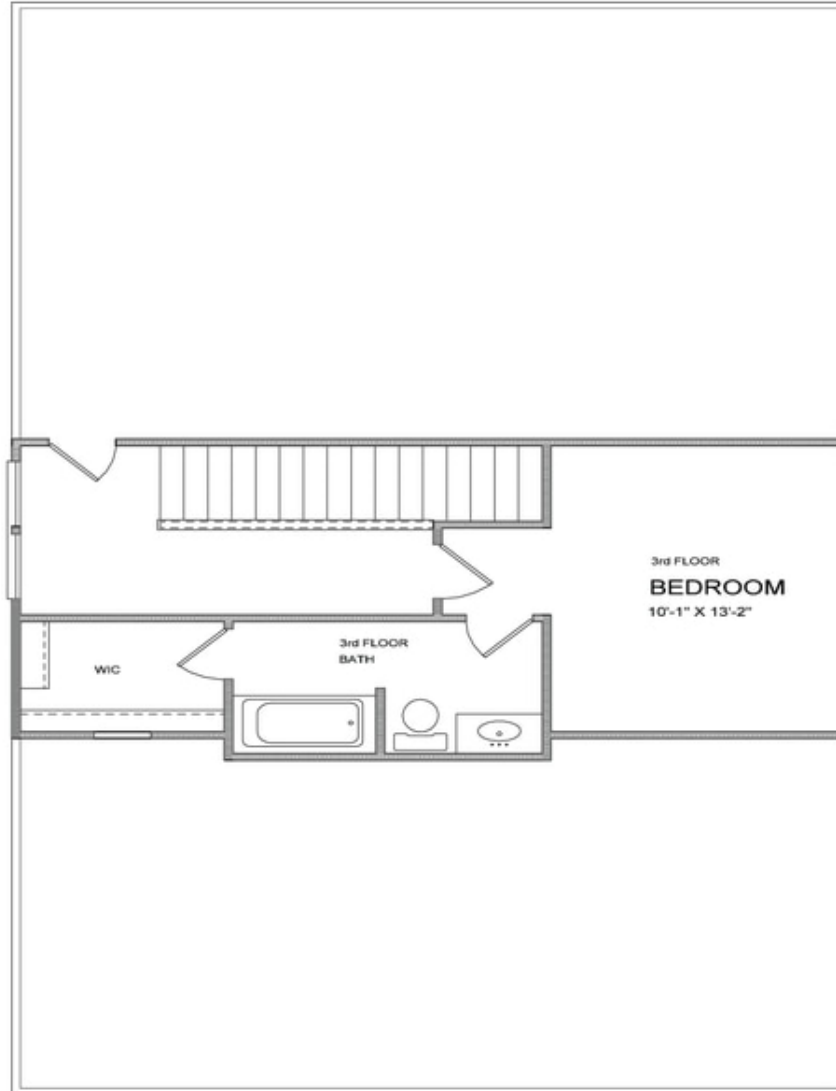
**Want to Know More
About This Home?**

CONTACT OUR COMMUNITY SALES MANAGER
Call Us @ (770) 521-2151



**Want to Know More
About This Home?**

CONTACT OUR COMMUNITY SALES MANAGER
Call Us @ (770) 521-2151



**Want to Know More
About This Home?**

CONTACT OUR COMMUNITY SALES MANAGER
Call Us @ (770) 521-2151



OPTION
 WHEN EXTERIOR STORAGE SHED



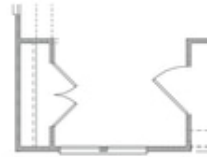
OPTION
 WHEN EXTERIOR STORAGE and
 INTERIOR CLOSET



OPTION
 WHEN BEDROOM 4 and BATH 3



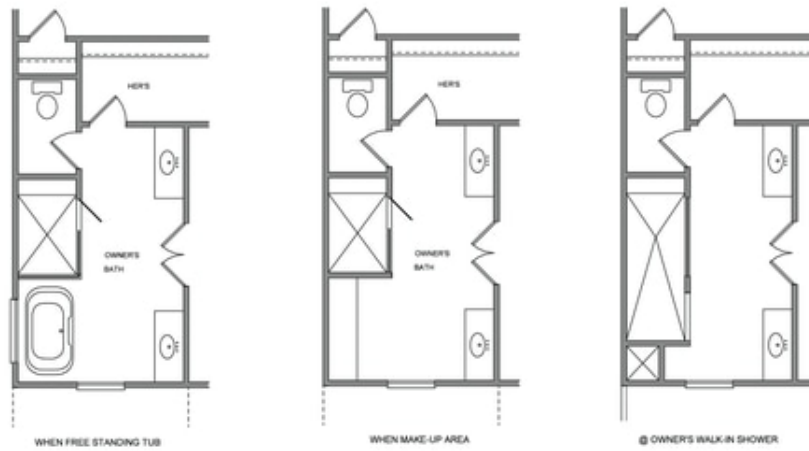
OPTION
 WHEN 9' SLIDING GLASS DOOR



OPTION
 WHEN COAT CLOSET

**Want to Know More
 About This Home?**

CONTACT OUR COMMUNITY SALES MANAGER
 Call Us @ (770) 521-2151



**Want to Know More
About This Home?**

CONTACT OUR COMMUNITY SALES MANAGER
Call Us @ (770) 521-2151