



PRICED AT
\$845,900

 3472 Sq Ft

 5 Beds

 4.0 Baths

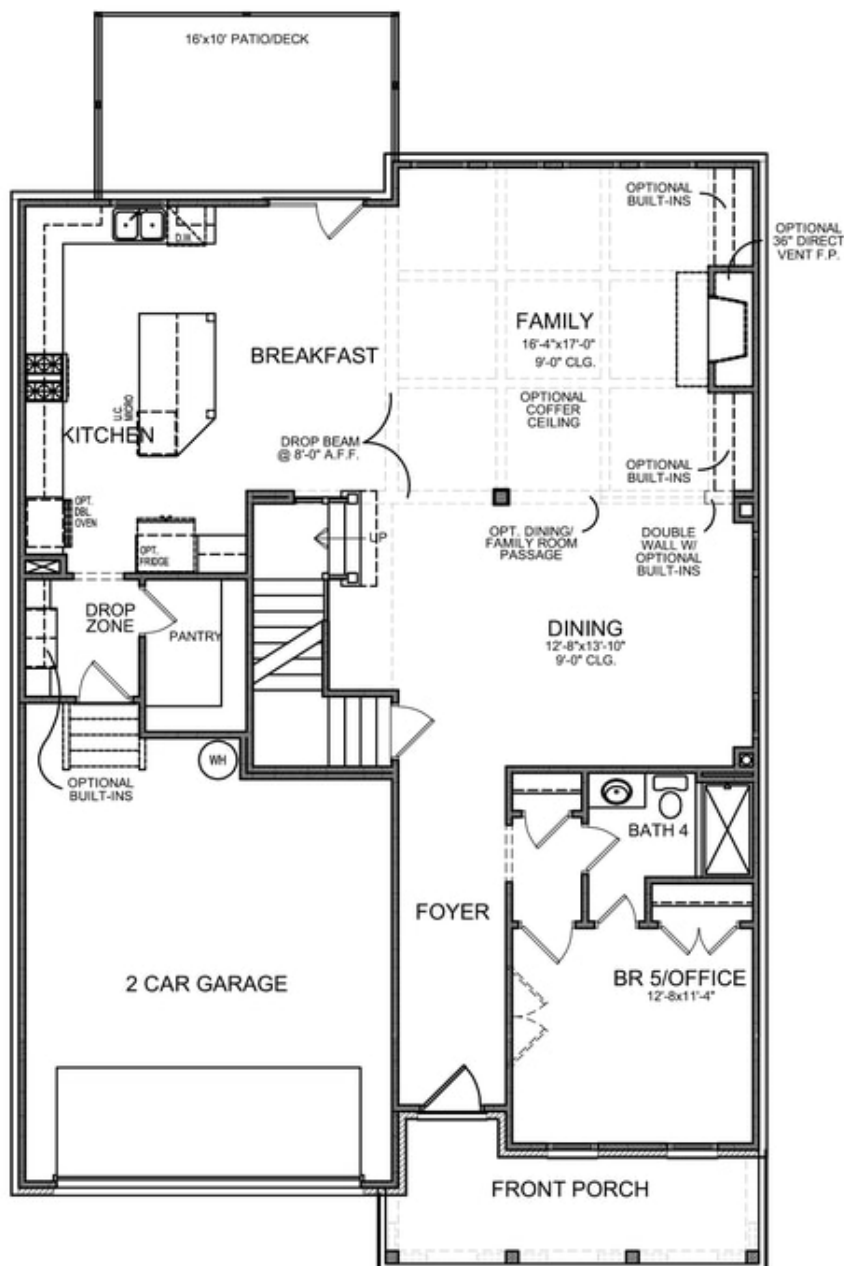
 2 Car Garage

 3.0 Story

Montgomery B (Home Site 216) - PRESALE/TO BE BUILT SLAB HOME by The Providence Group, estimated completion: Winter 2022. Sought after layout with light filled Chef's Extended Kitchen that opens to Family room with cozy Fireplace and formal Dining. Study/Office with shower bath on Main. Spacious Master w/Spa-like Bath with walk-in Shower, Soaking Tub & divided Walk-in closet. Oversized Guest Bed w/en-suite & two more Beds w/jack & jill bath upstairs all w/WIC. Private back yard. \$5,000 closing costs with preferred lender. HOA Maintained Lawns and trash. 1-2-8 year Warranty. New Denmark High School Cluster!! Gated neighborhood w/13 Acre Park w/Walking Trail, Clubhouse, Pool, Tennis, Playground & HOA Maintained Lawns. Best of all, this location has low Forsyth taxes while still in Alpharetta! Seller will review all offers on Monday 2.14.2022

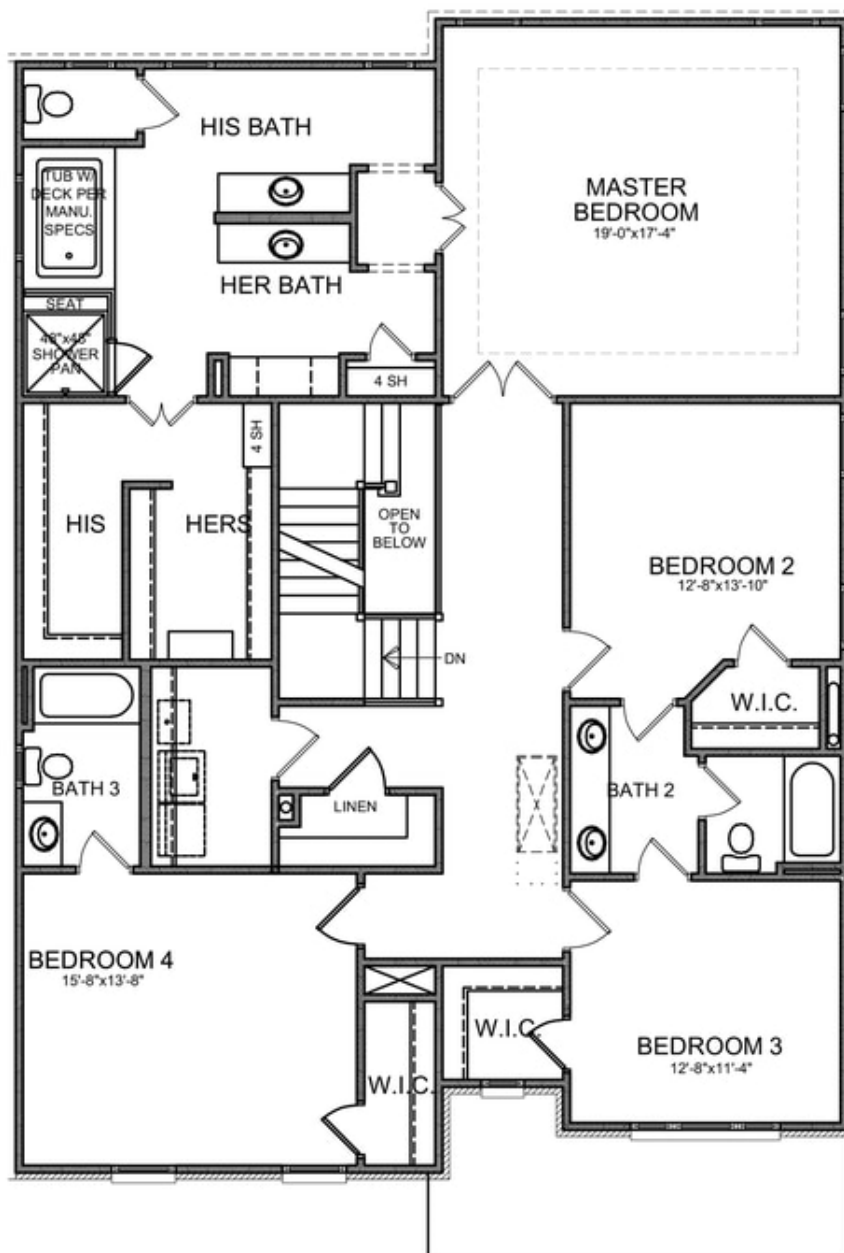
**Want to Know More
About This Home?**

CONTACT OUR COMMUNITY SALES MANAGER
Call Us @ (770) 521-2151



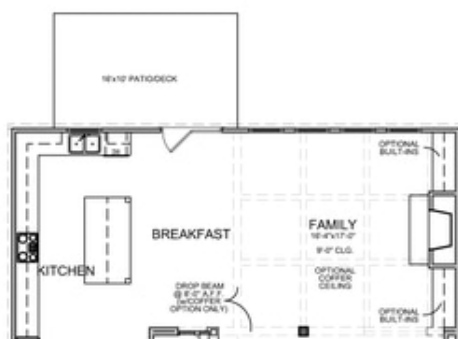
**Want to Know More
About This Home?**

CONTACT OUR COMMUNITY SALES MANAGER
Call Us @ (770) 521-2151



**Want to Know More
About This Home?**

CONTACT OUR COMMUNITY SALES MANAGER
Call Us @ (770) 521-2151



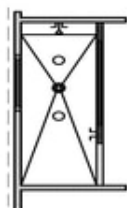
OPT Extended Kitchen



OPT Extended Porch & Awning



OPT Covered Porch



OPT Owner's Walk-In Shower

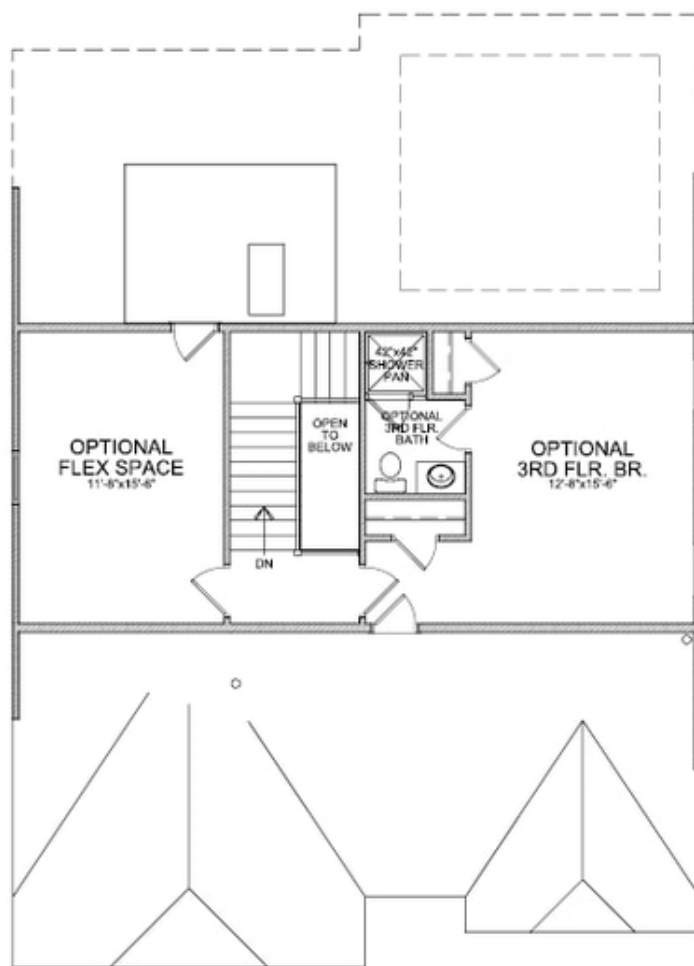


OPT Sunroom -&- OPT Patio/Deck

OPT Fireplace on Sunroom

**Want to Know More
About This Home?**

CONTACT OUR COMMUNITY SALES MANAGER
Call Us @ (770) 521-2151



OPT Third Floor

*Third Floor NOT available on Elevations B & E

**Want to Know More
About This Home?**

CONTACT OUR COMMUNITY SALES MANAGER
Call Us @ (770) 521-2151