

PRICED AT
\$713,660

 2360 Sq Ft

 4 Beds

 3.0 Baths

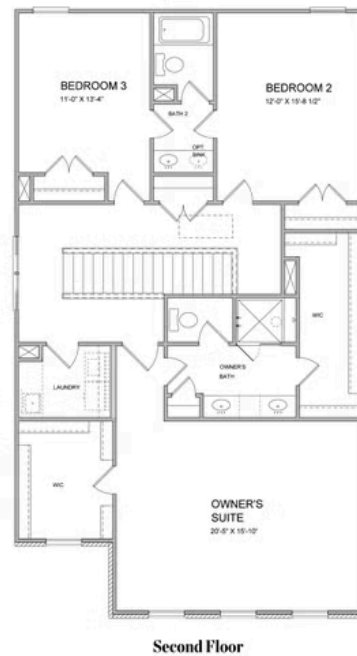
 2 Car Garage

 2.0 Story

Tensley A (Home Site 273). Check out this beautiful open layout featuring Kitchen overlooking Family/Dining, private Office space on main; covered patio. Guest Retreat with full bathroom & walk-in shower on main tucked at rear of the home for privacy completes first floor. Upstairs you will find an oversized Owner's Suite with Spa-like Bath; Walk-in Closet & two more bedrooms that share Jack-n-Jill Bathroom. Fantastic community amenities include Tennis Courts, Pool, Clubhouse, 13 acre park w/walking trails, Forsyth County Schools & Taxes, 4 mi to Avalon & 2 mi to Halcyon. Photos are NOT of an actual home. Photos are of previously built Tensley floorplan. Expected completion Fall 2022. Sought after Denmark High School Cluster! Fantastic gated community with 13-Acre Central Park with Walking Trail, Clubhouse, Pool, Tennis, Playgrounds and HOA Maintained Lawns. Best of all, this well-situated location means you can take advantage of low Forsyth taxes while enjoying a fantastic Alpharetta lifestyle! Less than two miles to the New Halcyon! and 4 miles from Alpharetta's thriving Downtown or the beckoning streets of Avalon. \$5,000 closing costs with use of Green Brick Mortgage for buyer's financing. 1-2-8 year Warranty. [The Tensley]

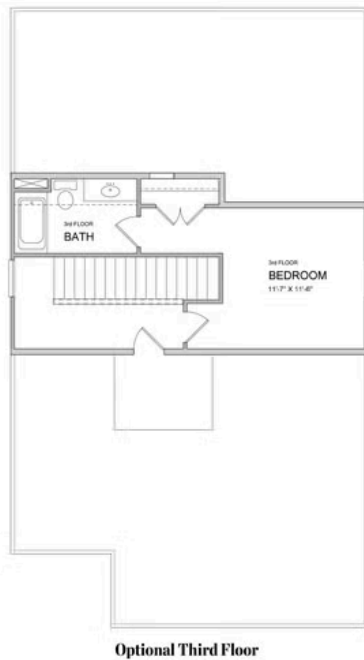
Want to Know More
About This Home?

CONTACT OUR COMMUNITY SALES MANAGER



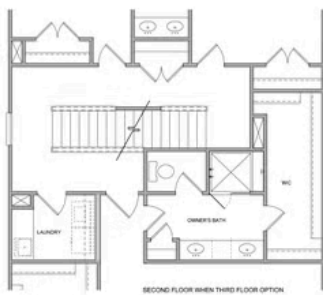
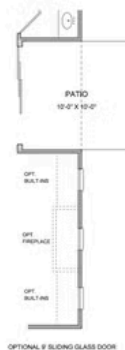
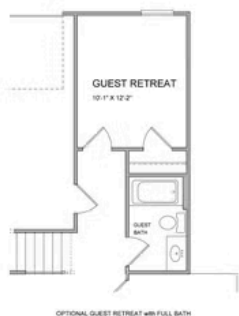
Want to Know More
About This Home?

CONTACT OUR COMMUNITY SALES MANAGER



Want to Know More
About This Home?

CONTACT OUR COMMUNITY SALES MANAGER



All Options

Want to Know More
About This Home?

CONTACT OUR COMMUNITY SALES MANAGER