



PRICED AT
\$641,865

 2734 Sq Ft

 6 Beds

 4.0 Baths

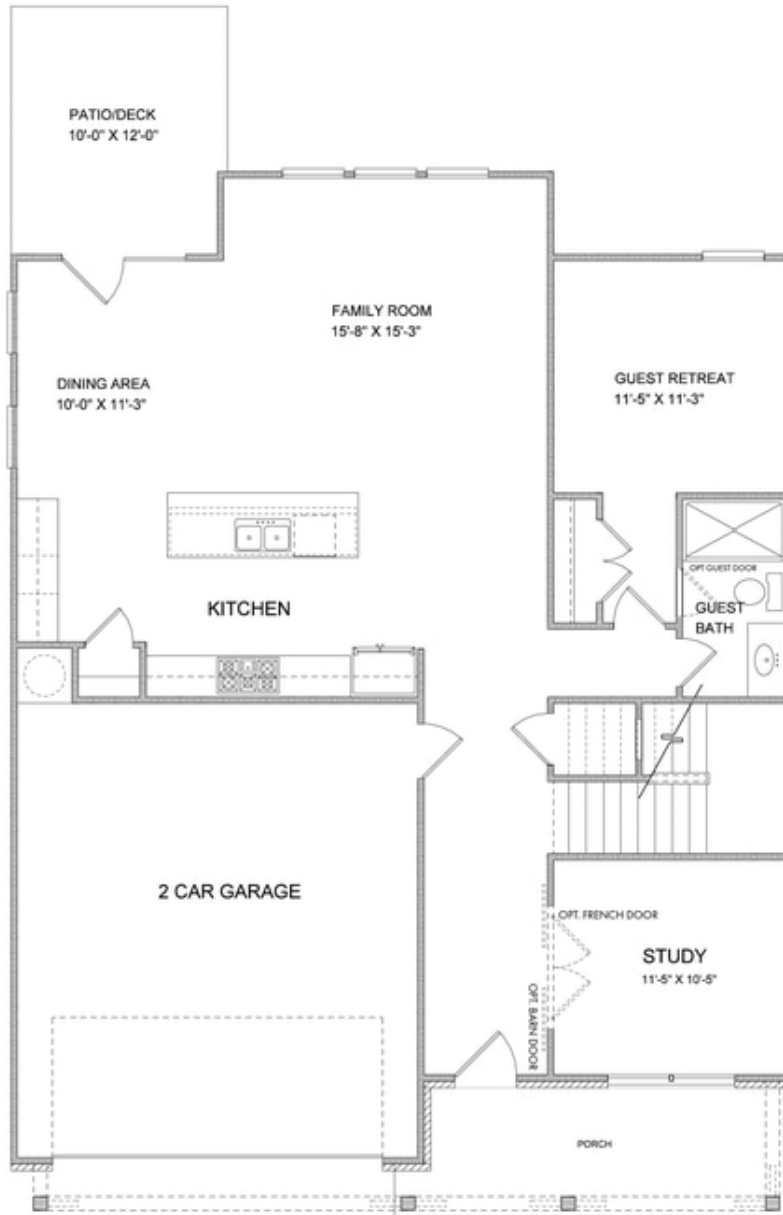
 2 Car Garage

 2.0 Story

Bennett B (Lot 231) - PRESALE HOME by The Providence Group! Covered Front Porch entrance leading to light filled open layout with Guest Retreat on main in addition to Study and Sunroom. Chef's Kitchen w/large island opens to Dining & Family. Oversized Master Suite w/huge walk-in closet, dual vanities & walk-in Shower. Three additional Bedrooms, one with private en-suite bath & Loft finish out Second Floor. Sought after Denmark High School Cluster! Fantastic gated community with 13 Acre Central Park with Walking Trail, Clubhouse, Pool, Tennis, Playgrounds and HOA Maintained Lawns. Best of all, this well-situated location means you can take advantage of low Forsyth taxes while enjoying a fantastic Alpharetta lifestyle! Less than two miles to the New Halcyon! and 4 miles from Alpharetta's thriving Downtown or the beckoning streets of Avalon. \$5,000 closing costs with use of Green Brick Mortgage for buyer's financing. 1-2-10 year Warranty.

**Want to Know More
About This Home?**

CONTACT OUR COMMUNITY SALES MANAGER
Call Us @ (770) 521-2151



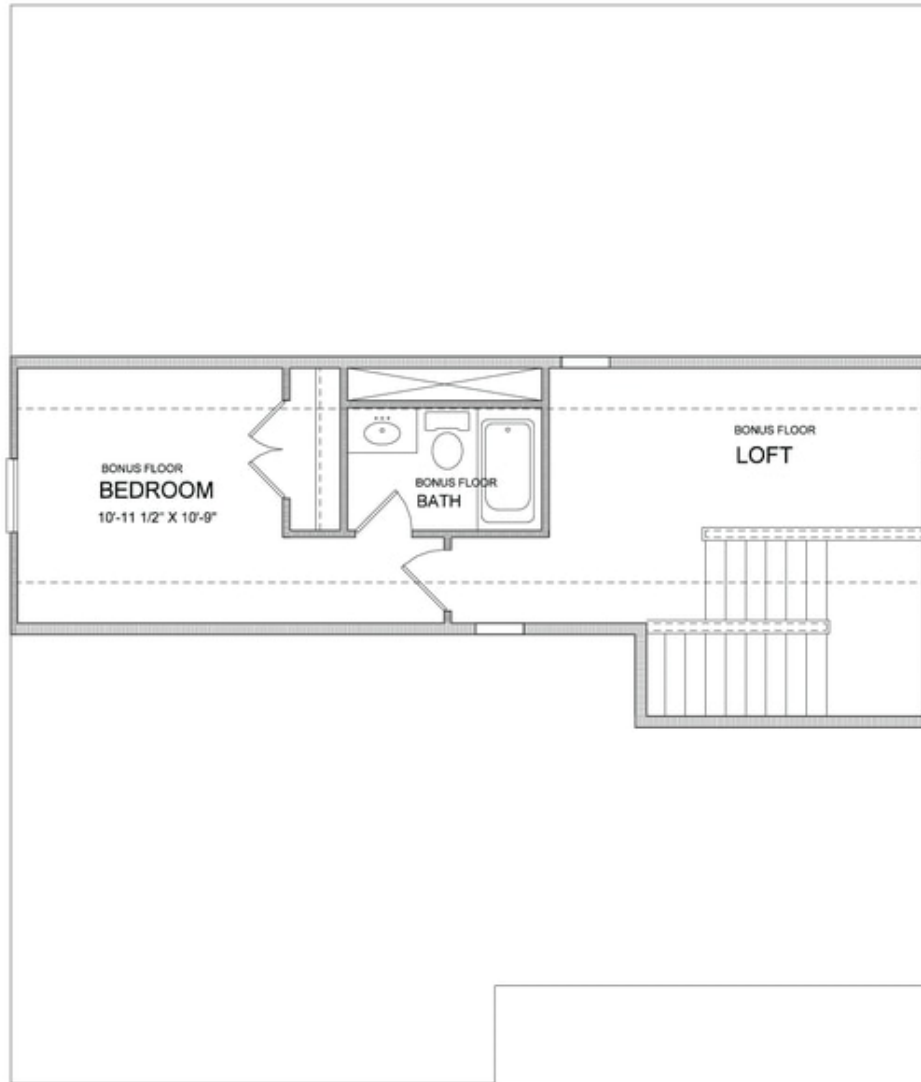
**Want to Know More
About This Home?**

CONTACT OUR COMMUNITY SALES MANAGER
Call Us @ (770) 521-2151



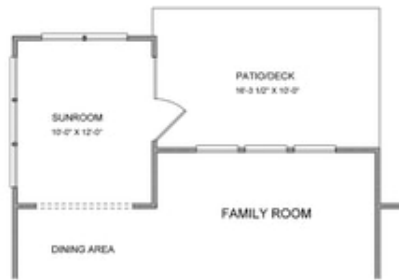
**Want to Know More
About This Home?**

CONTACT OUR COMMUNITY SALES MANAGER
Call Us @ (770) 521-2151

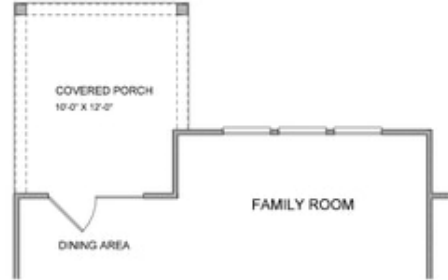


**Want to Know More
About This Home?**

CONTACT OUR COMMUNITY SALES MANAGER
Call Us @ (770) 521-2151



Opt. Sunroom



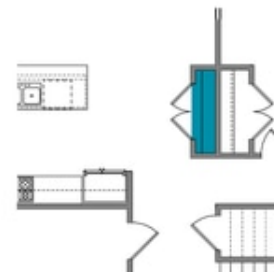
Opt. Covered Porch



Opt. Fireplace



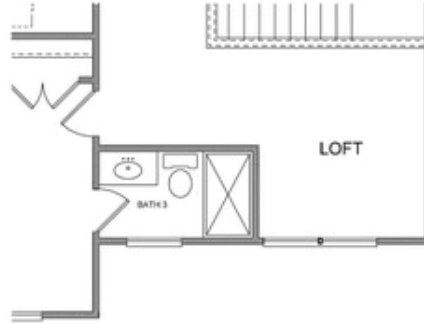
Opt. Rear Fireplace



Opt. Pantry

**Want to Know More
 About This Home?**

CONTACT OUR COMMUNITY SALES MANAGER
 Call Us @ (770) 521-2151



Opt. 3rd Bath



Opt. Owner's Sitting Room



Opt. Owner's Walk-in Shower

**Want to Know More
About This Home?**

CONTACT OUR COMMUNITY SALES MANAGER
Call Us @ (770) 521-2151