



PRICED AT
\$691,690

 2734 Sq Ft

 5 Beds

 3.0 Baths

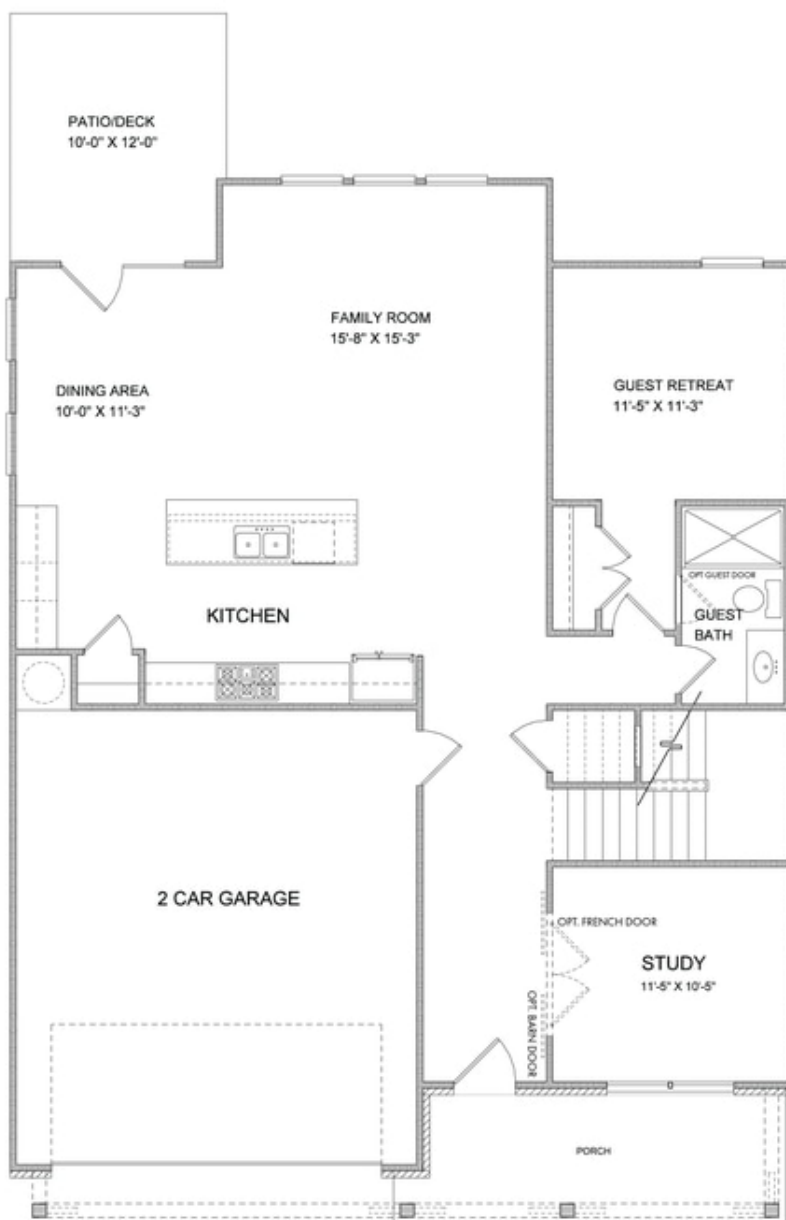
 2 Car Garage

 2.0 Story

Bennett A (Home Site 284) - TO BE BUILT BASEMENT HOME by The Providence Group. Open living space with addtl Study perfect for home office on main along with Guest En-Suite. Kitchen to feature tons of cabinets with large island & view to Family & Dining. Large Owner's Suite with Spa-like Bath, 3 more beds on second floor with shared bath & Large loft space with open railing. Large unfinished basement for future expansion space. Light filled South facing deck in back yard! Estimated completion Early 2022. Hurry to be able to personalize with your own design selections! \$5,000 closing costs with preferred lender. HOA Maintained Lawns and trash. 1-2-10 year Warranty. New Denmark High School Cluster!! Gated nhood w/13 Acre Park w/Walking Trail, Clubhouse, Pool, Tennis, Playground & HOA Maintained Lawns. Best of all, this location has low Forsyth taxes while still in Alpharetta!

**Want to Know More
About This Home?**

CONTACT OUR NEW HOME NAVIGATOR
Call Us @ (770) 521-2151



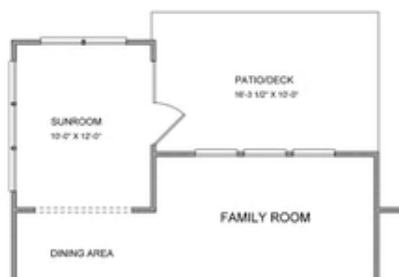
**Want to Know More
About This Home?**

CONTACT OUR NEW HOME NAVIGATOR
Call Us @ (770) 521-2151

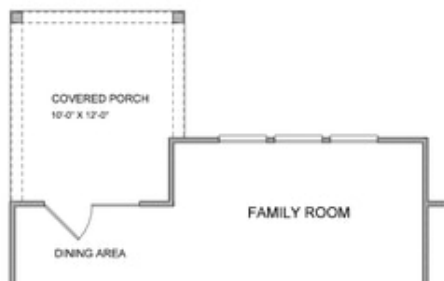


**Want to Know More
About This Home?**

CONTACT OUR NEW HOME NAVIGATOR
Call Us @ (770) 521-2151



Opt. Sunroom



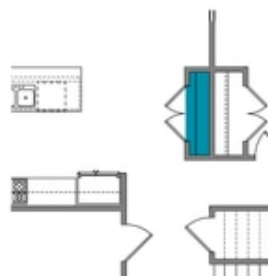
Opt. Covered Porch



Opt. Fireplace



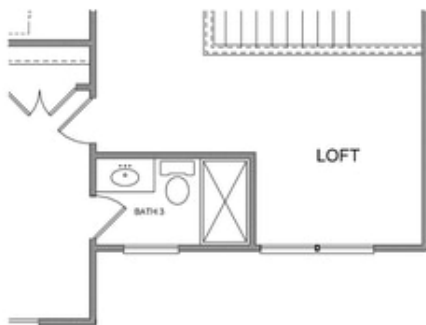
Opt. Rear Fireplace



Opt. Pantry

**Want to Know More
About This Home?**

CONTACT OUR NEW HOME NAVIGATOR
Call Us @ (770) 521-2151



Opt. 3rd Bath



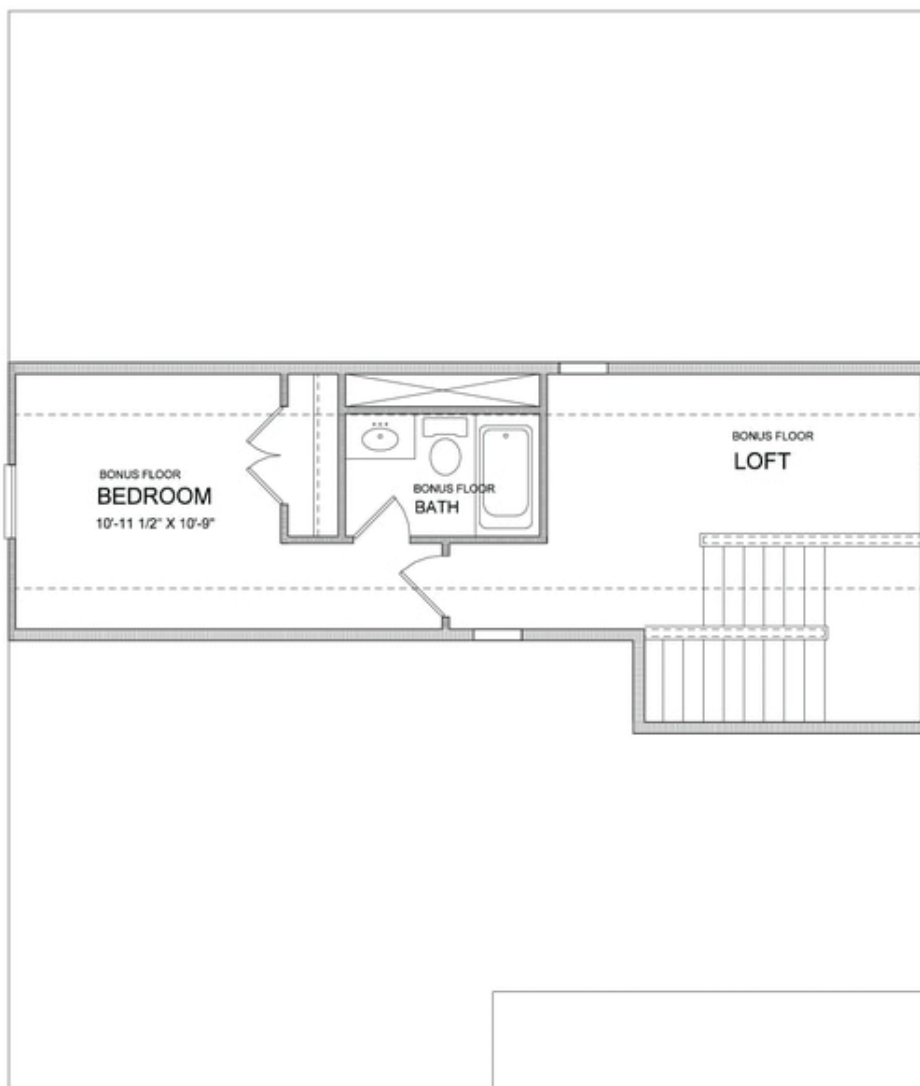
Opt. Owner's Sitting Room



Opt. Owner's Walk-in Shower

Want to Know More
About This Home?

CONTACT OUR NEW HOME NAVIGATOR
Call Us @ (770) 521-2151



**Want to Know More
About This Home?**

CONTACT OUR NEW HOME NAVIGATOR
Call Us @ (770) 521-2151