








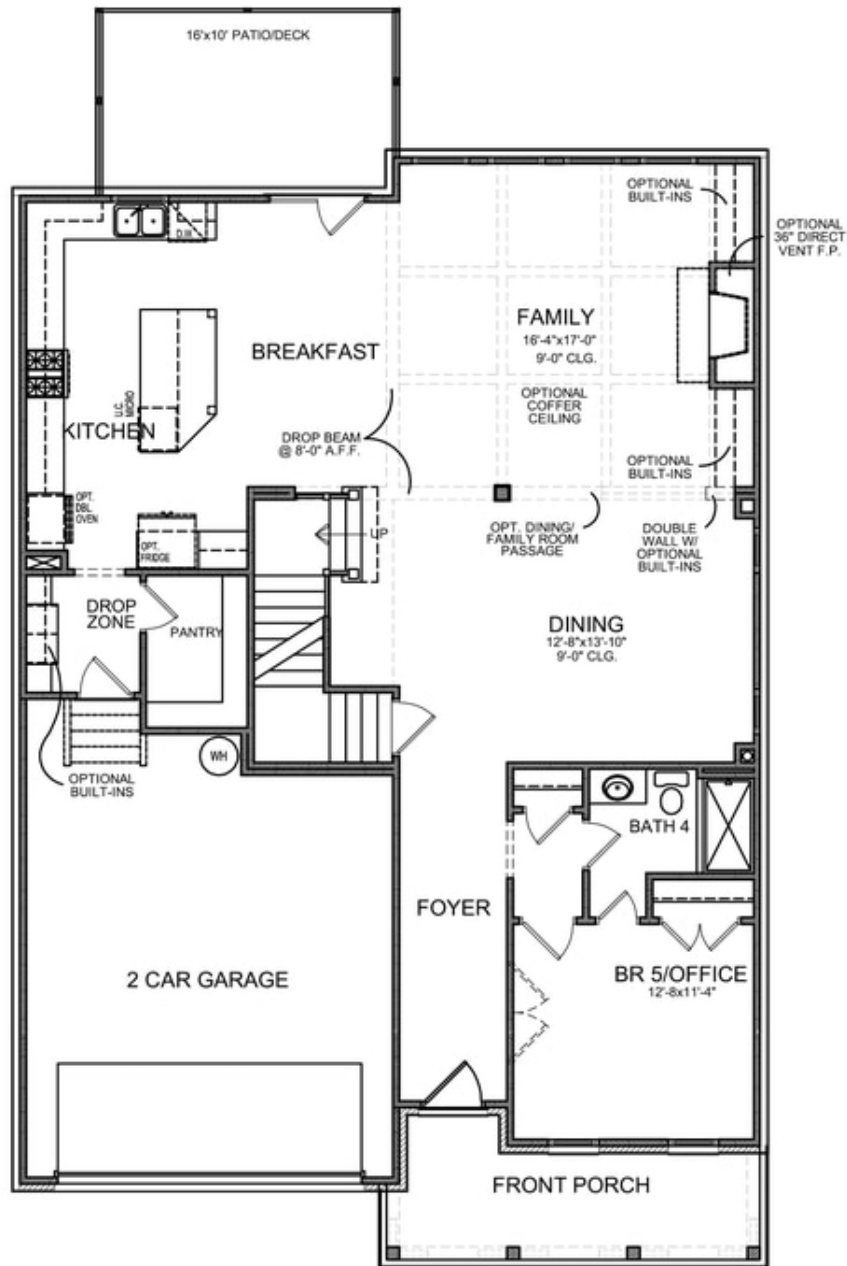
PRICED AT
\$717,660

-  3511 Sq Ft
-  5 Beds
-  4.0 Baths
-  2 Car Garage
-  3.0 Story

Montgomery C (Home Site 285) - PRESALE BASEMENT HOME by The Providence Group. Sought after layout with light filled Chef's Kitchen that opens to Family room with cozy Fireplace and formal Dining. Guest/Office en-suite on Main. Spacious Master w/Spa-like Bath with walk-in Shower, Soaking Tub & divided Walk-in closet. Oversized Guest Bed w/en-suite & two more Beds w/jack & jill bath upstairs all w/WIC. Large unfinished basement for future expansion space. \$5,000 closing costs with preferred lender. HOA Maintained Lawns and trash. 1-2-10 year Warranty. New Denmark High School Cluster!! Gated nhood w/13 Acre Park w/Walking Trail, Clubhouse, Pool, Tennis, Playground & HOA Maintained Lawns. Best of all, this location has low Forsyth taxes while still in Alpharetta!

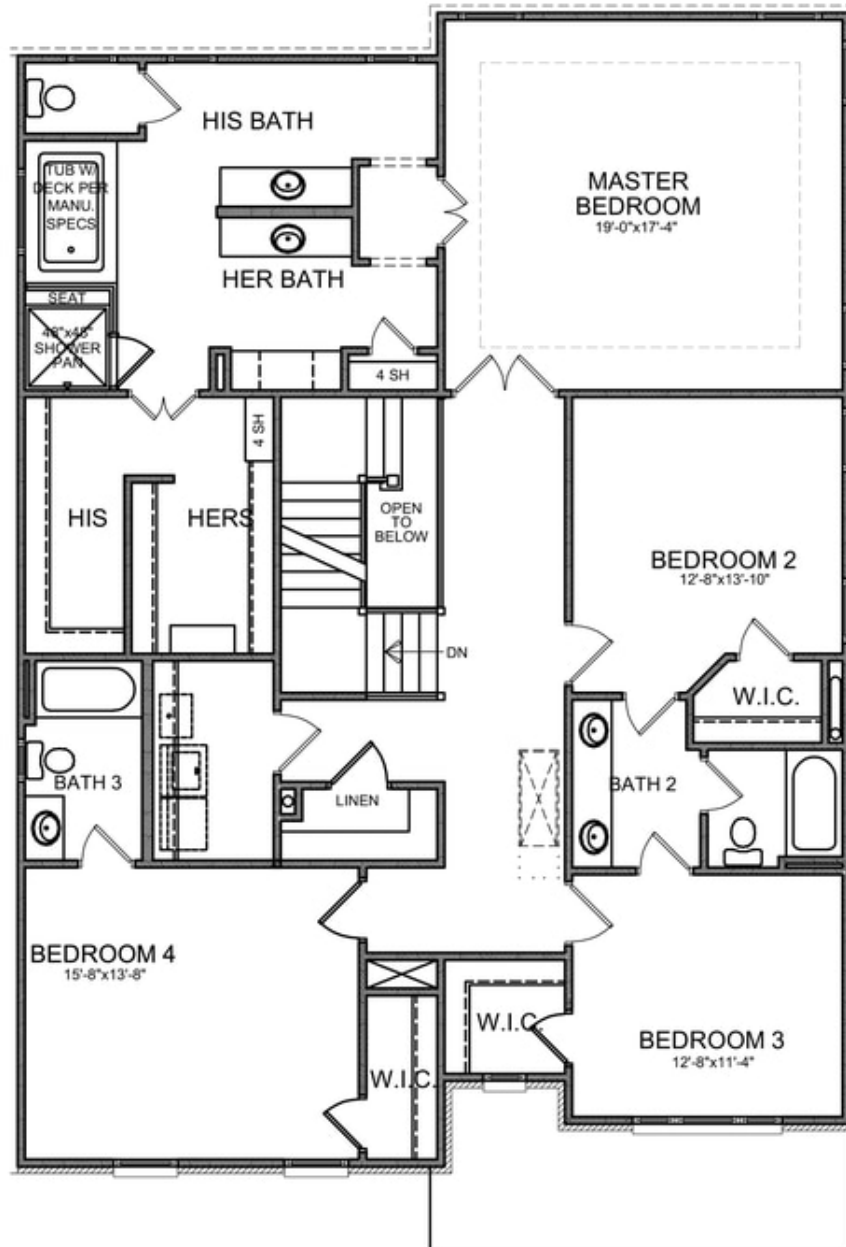
**Want to Know More
About This Home?**

CONTACT OUR COMMUNITY SALES MANAGER
Call Us @ (770) 521-2151



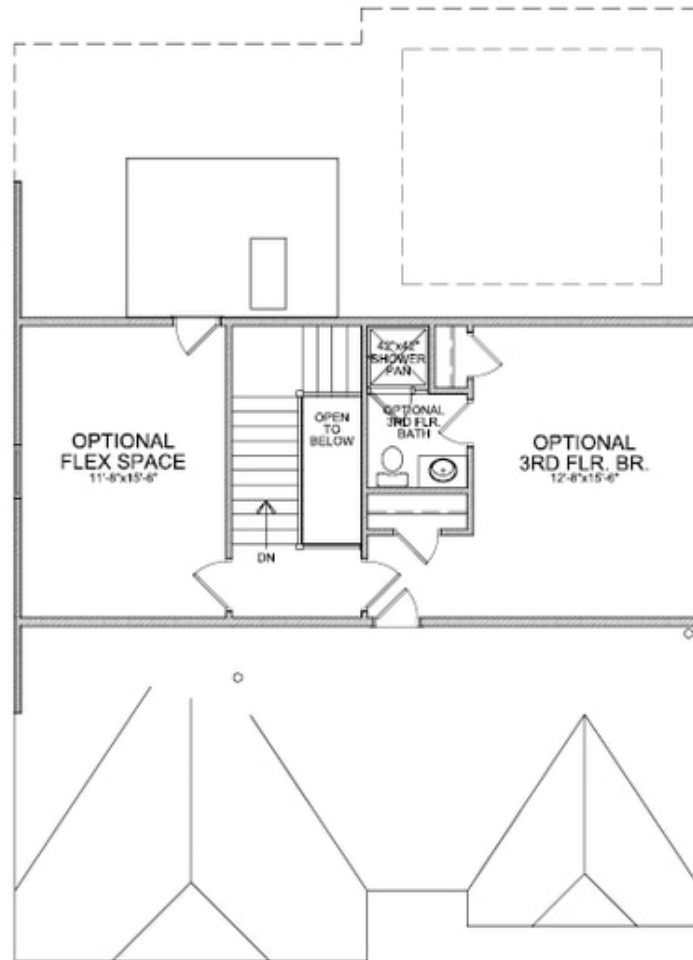
**Want to Know More
 About This Home?**

CONTACT OUR COMMUNITY SALES MANAGER
 Call Us @ (770) 521-2151



**Want to Know More
About This Home?**

CONTACT OUR COMMUNITY SALES MANAGER
Call Us @ (770) 521-2151



OPT Third Floor

*Third Floor NOT available on Elevations B & E

**Want to Know More
About This Home?**

CONTACT OUR COMMUNITY SALES MANAGER
Call Us @ (770) 521-2151