



PRICED AT
\$715,390

 3671 Sq Ft

 5 Beds

 4.0 Baths

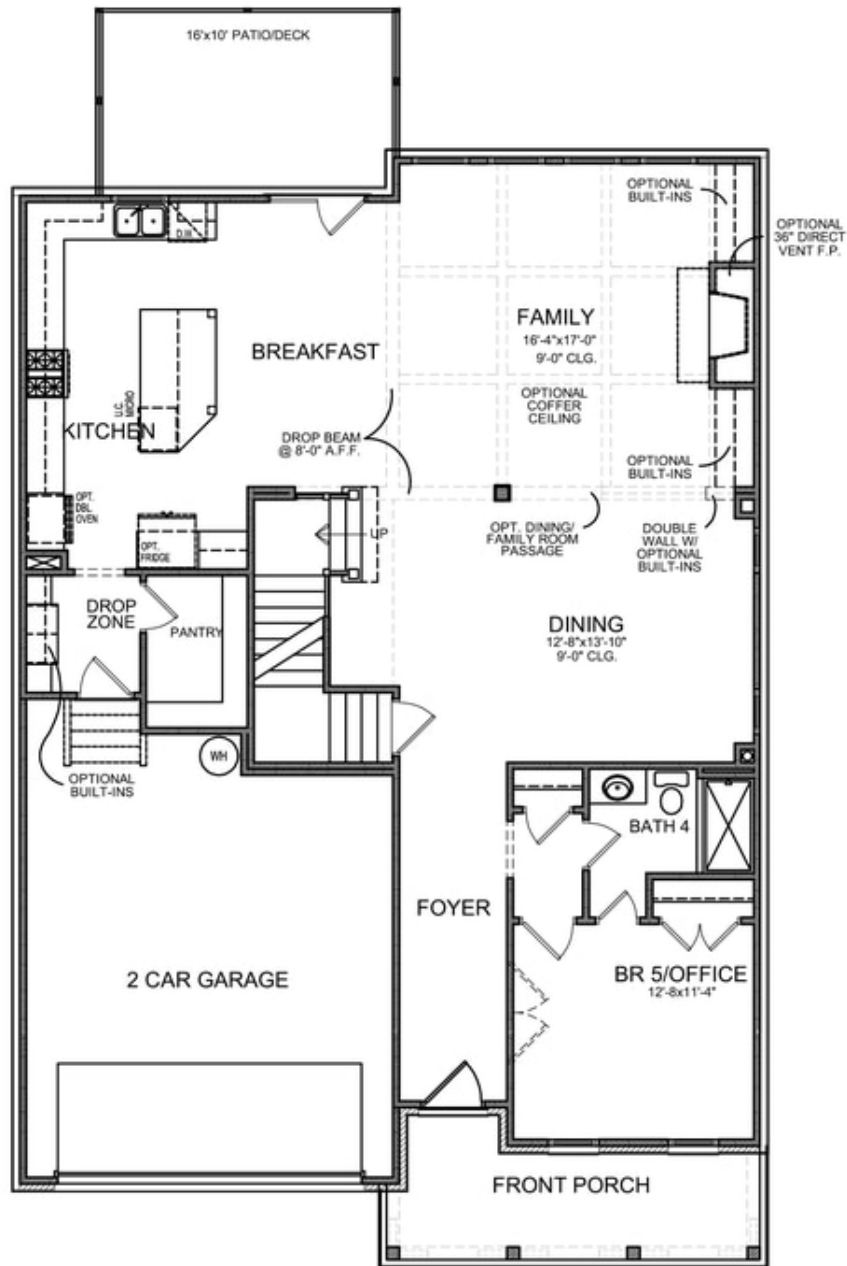
 2 Car Garage

 3.0 Story

Montgomery G (Home Site 287) - PRESALE BASEMENT HOME by The Providence Group. Sought after layout with light filled Chef's Kitchen that opens to Family room with cozy Fireplace and formal Dining. Light filled sunroom off kitchen leads to large deck. Guest/Office en-suite on Main. Spacious Master w/Spa-like Bath with walk-in Shower, Soaking Tub & divided Walk-in closet. Oversized Guest Bed w/en-suite & two more Beds w/jack & jill bath upstairs all w/WIC. Large unfinished basement for future expansion space. \$5,000 closing costs with preferred lender. HOA Maintained Lawns and trash. 1-2-10 year Warranty. New Denmark High School Cluster!! Gated nhood w/13 Acre Park w/Walking Trail, Clubhouse, Pool, Tennis, Playground & HOA Maintained Lawns. Best of all, this location has low Forsyth taxes while still in Alpharetta!

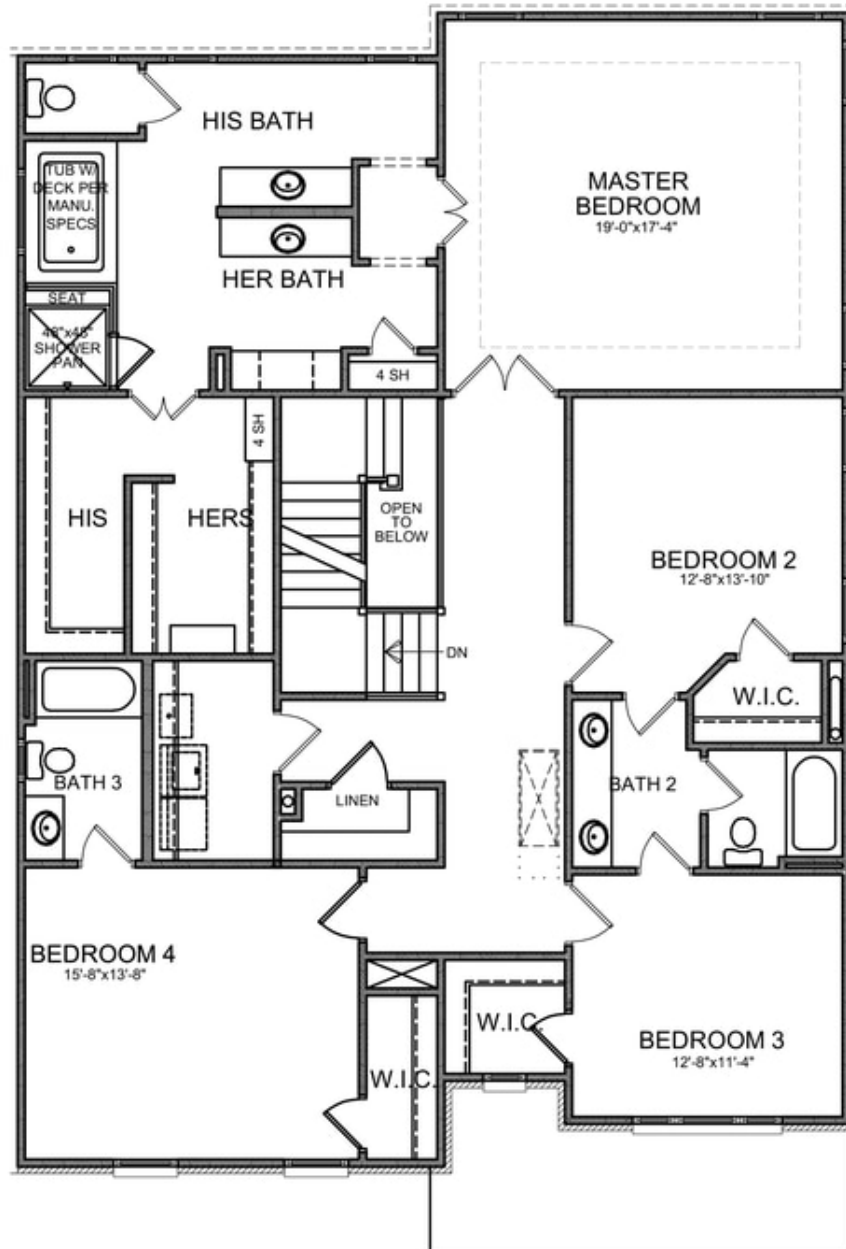
**Want to Know More
About This Home?**

CONTACT OUR COMMUNITY SALES MANAGER
Call Us @ (770) 521-2151



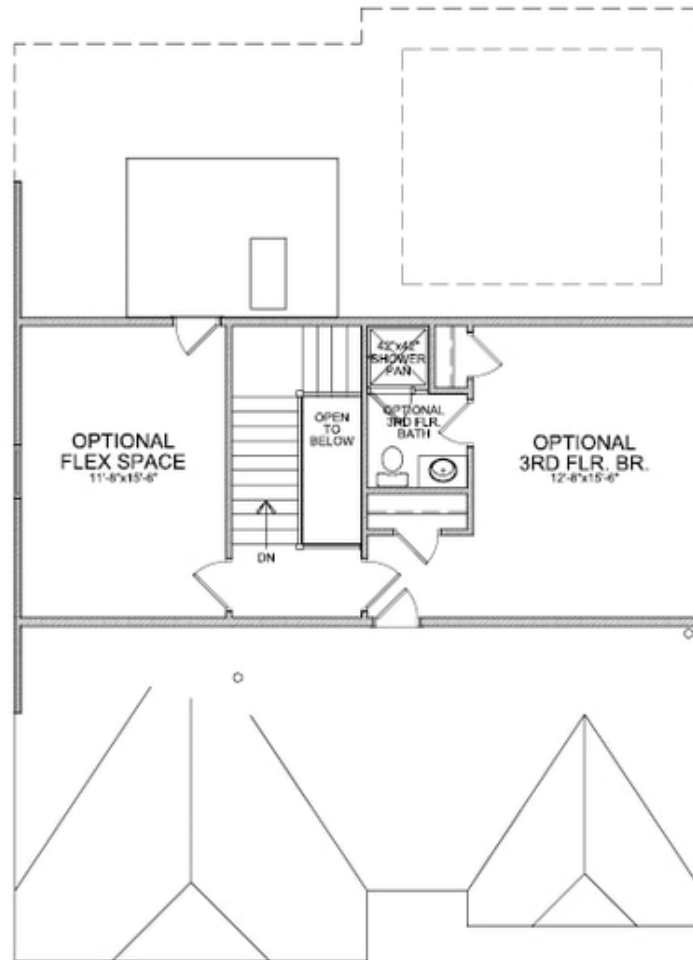
**Want to Know More
 About This Home?**

CONTACT OUR COMMUNITY SALES MANAGER
 Call Us @ (770) 521-2151



**Want to Know More
 About This Home?**

CONTACT OUR COMMUNITY SALES MANAGER
 Call Us @ (770) 521-2151



OPT Third Floor

*Third Floor NOT available on Elevations B & E

**Want to Know More
About This Home?**

CONTACT OUR COMMUNITY SALES MANAGER
Call Us @ (770) 521-2151