




PRICED AT  
**\$658,100**

 2856 Sq Ft

 4 Beds

 4.0 Baths

 2 Car Garage

 2.0 Story

Bennett B (Lot 227) - PRESALE HOME by The Providence Group! Hurry to be able to personalize with your own structural and design selections! Spacious two-story design with Open main level layout boasting Gourmet Kitchen with Island overlooking Dining & Family Room as well as Guest Bedroom and Full Bath. Owner's Suite & Private Bath with Dual Vanities, soaking tub and separate shower and Over Size Walk-In Closet. Three additional Bedrooms with shared bath & Laundry on Upper as well. Sought after Denmark High School Cluster! Fantastic gated community with 13 Acre Central Park with Walking Trail, Clubhouse, Pool, Tennis, Playgrounds and HOA Maintained Lawns. Best of all, this well-situated location means you can take advantage of low Forsyth taxes while enjoying a fantastic Alpharetta lifestyle! Less than two miles to the New Halcyon! and 4 miles from Alpharetta's thriving Downtown or the beckoning streets of Avalon. \$5,000 closing costs with use of Green Brick Mortgage for buyer's financing. 1-2-10 year Warranty.

**Want to Know More  
About This Home?**

CONTACT OUR COMMUNITY SALES MANAGER  
Call Us @ (770) 521-2151



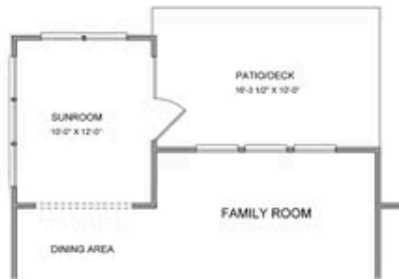
Want to Know More  
About This Home?

CONTACT OUR COMMUNITY SALES MANAGER  
Call Us @ (770) 521-2151

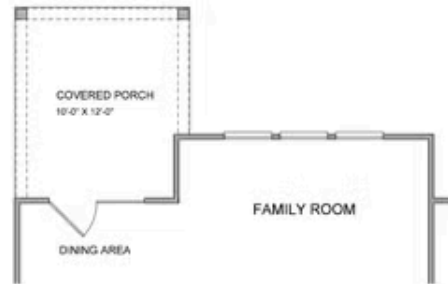


**Want to Know More  
About This Home?**

CONTACT OUR COMMUNITY SALES MANAGER  
Call Us @ (770) 521-2151



*Opt. Sunroom*



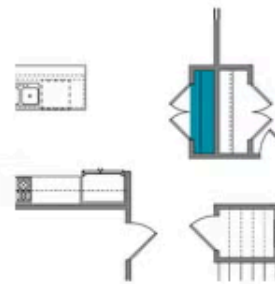
*Opt. Covered Porch*



*Opt. Fireplace*



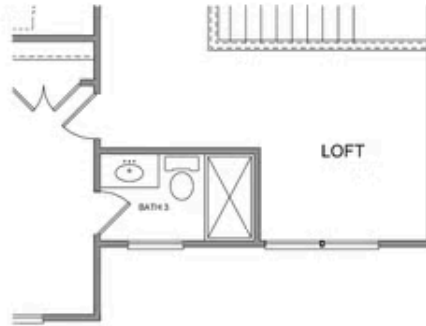
*Opt. Rear Fireplace*



*Opt. Pantry*

Want to Know More  
About This Home?

CONTACT OUR COMMUNITY SALES MANAGER  
Call Us @ (770) 521-2151



Opt. 3rd Bath



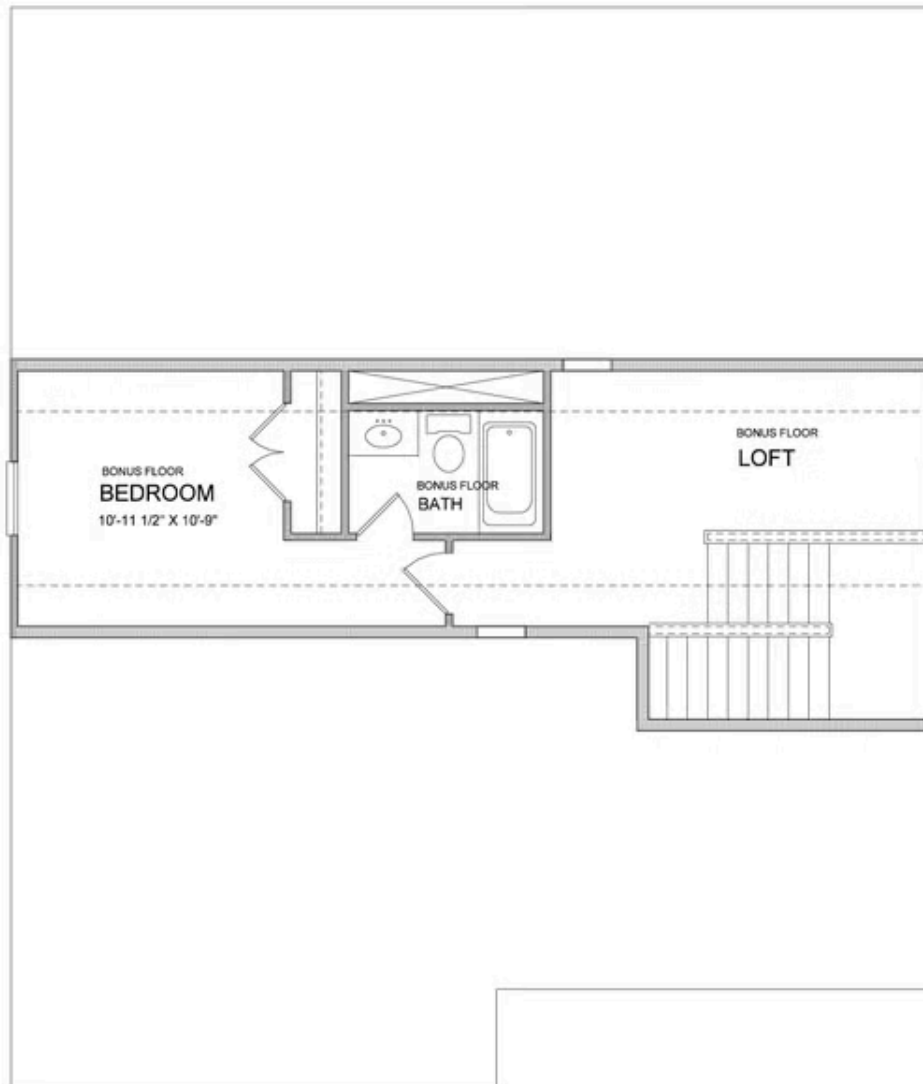
Opt. Owner's Sitting Room



Opt. Owner's Walk-in Shower

Want to Know More  
About This Home?

CONTACT OUR COMMUNITY SALES MANAGER  
Call Us @ (770) 521-2151



Want to Know More  
About This Home?

CONTACT OUR COMMUNITY SALES MANAGER  
Call Us @ (770) 521-2151