



PRICED AT
\$872,000

 **3636 Sq Ft**

 **5 Beds**

 **4.0 Baths**

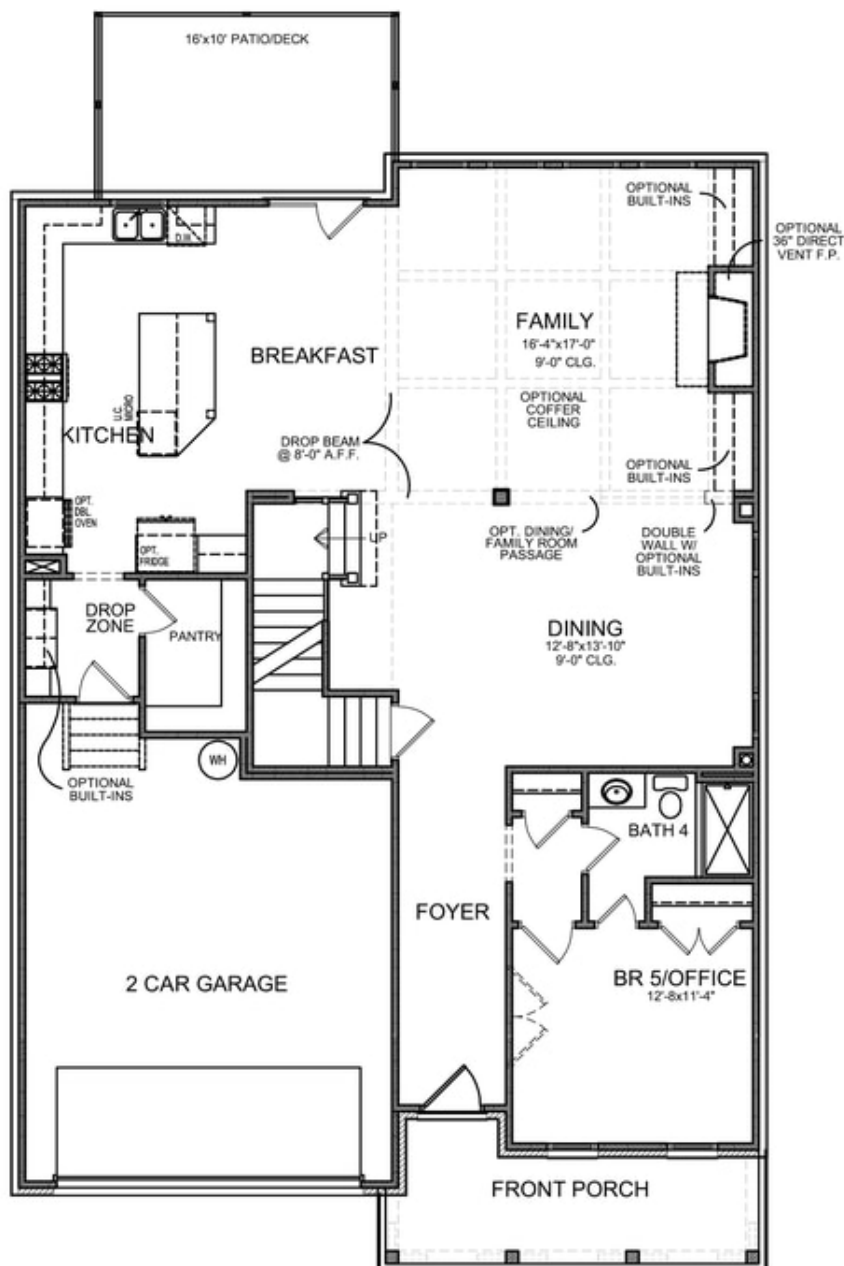
 **2 Car Garage**

 **3.0 Story**

Montgomery D (Home Site 220) - PRESALE/ TO-BE BUILT SLAB HOME with estimated completion: Winter 2022. Sought after layout with light filled Chef's Extended Kitchen that opens to Family room with cozy Fireplace and formal Dining. Bed/Bath on main with full walk-in shower. 10' ceiling on main and walk-in pantry. Spacious Master w/Spa-like Bath with walk-in Shower, Soaking Tub & divided Walk-in closet. Oversized Guest Bed w/en-suite & two more Beds w/jack & jill bath upstairs all with walk-in closets. Spacious .25 acre private back yard. \$5,000 closing costs with preferred lender. HOA Maintained Lawns and trash. 1-2-8 year Warranty. New Denmark High School Cluster!! Gated neighborhood w/13 Acre Park w/Walking Trail, Clubhouse, Pool, Tennis, Playground & HOA Maintained Lawns. Best of all, this location has low Forsyth taxes while still in Alpharetta! Highest and Best offers are due on 2/13/2022 @ 6PM

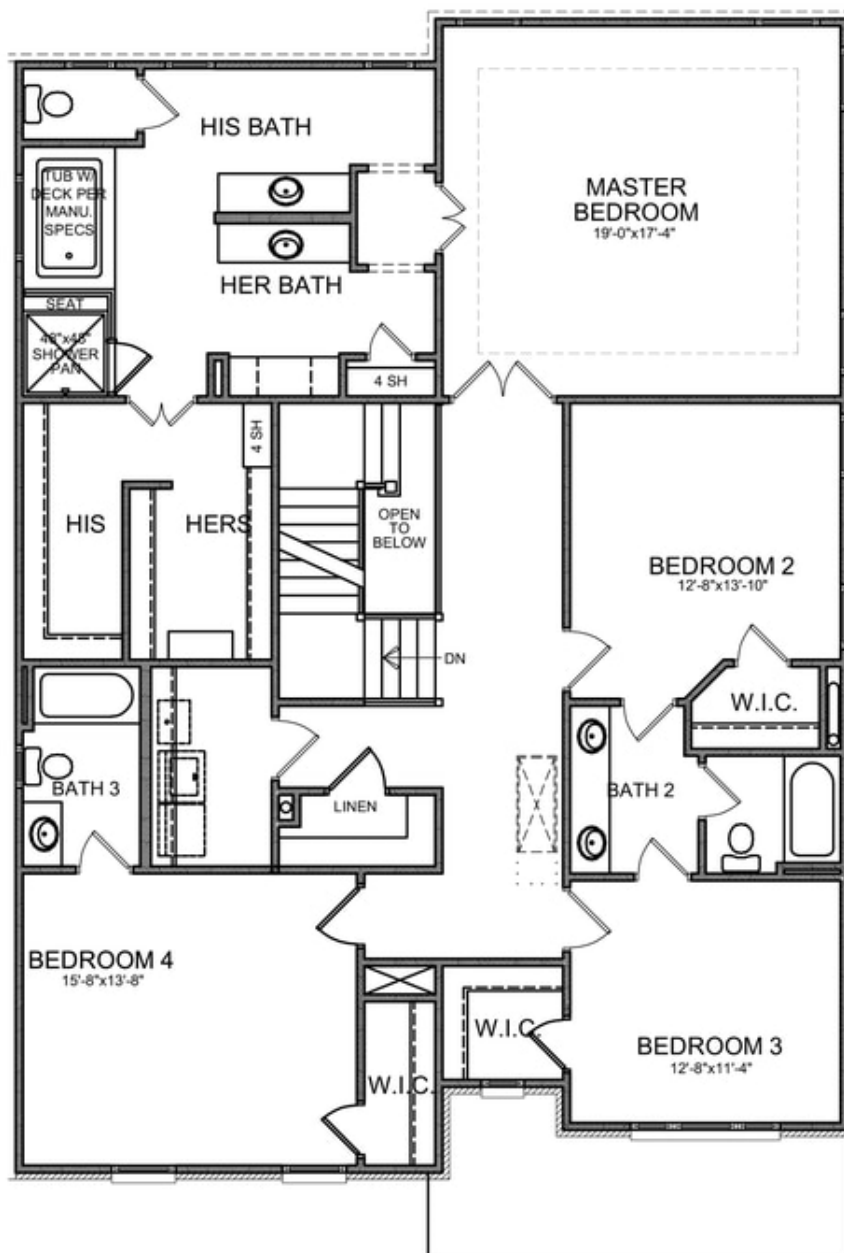
**Want to Know More
About This Home?**

CONTACT OUR COMMUNITY SALES MANAGER
Call Us @ (770) 521-2151



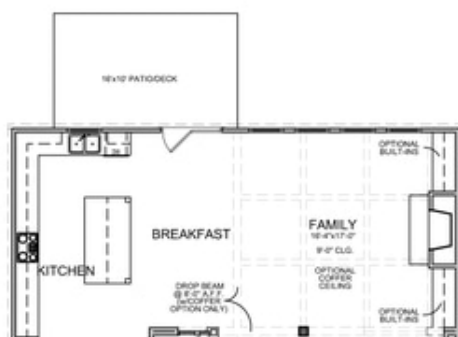
**Want to Know More
About This Home?**

CONTACT OUR COMMUNITY SALES MANAGER
Call Us @ (770) 521-2151



**Want to Know More
About This Home?**

CONTACT OUR COMMUNITY SALES MANAGER
Call Us @ (770) 521-2151



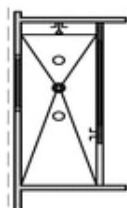
OPT Extended Kitchen



OPT Extended Porch & Awning



OPT Covered Porch



OPT Owner's Walk-In Shower

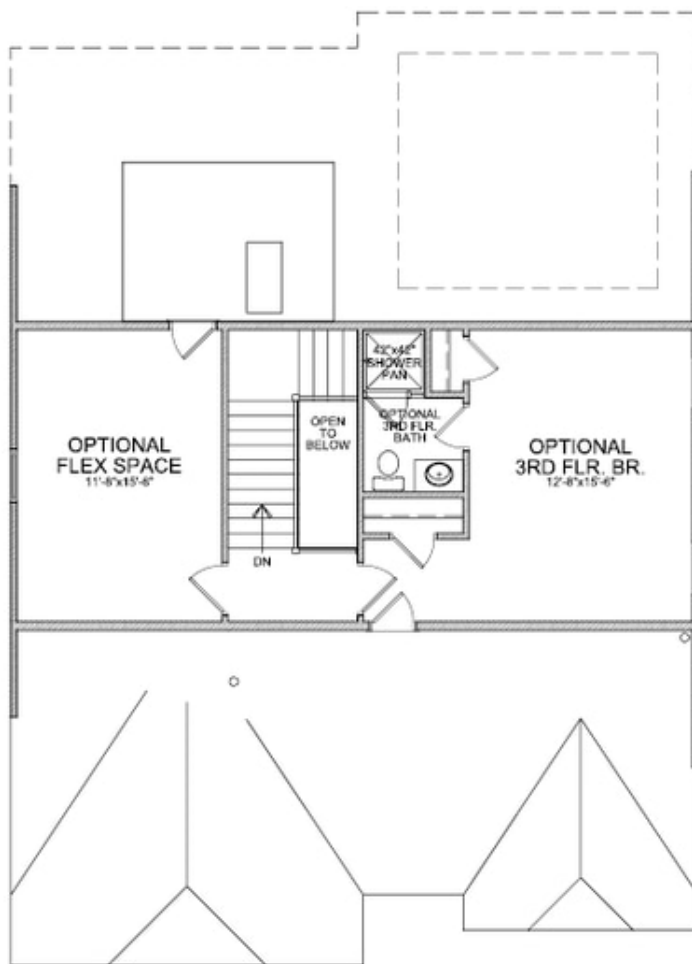


OPT Sunroom -&- OPT Patio/Deck

OPT Fireplace on Sunroom

Want to Know More
About This Home?

CONTACT OUR COMMUNITY SALES MANAGER
Call Us @ (770) 521-2151



OPT Third Floor

*Third Floor NOT available on Elevations B & E

**Want to Know More
About This Home?**

CONTACT OUR COMMUNITY SALES MANAGER
Call Us @ (770) 521-2151