



PRICED AT
\$687,205

 2479 Sq Ft

 5 Beds

 3.0 Baths

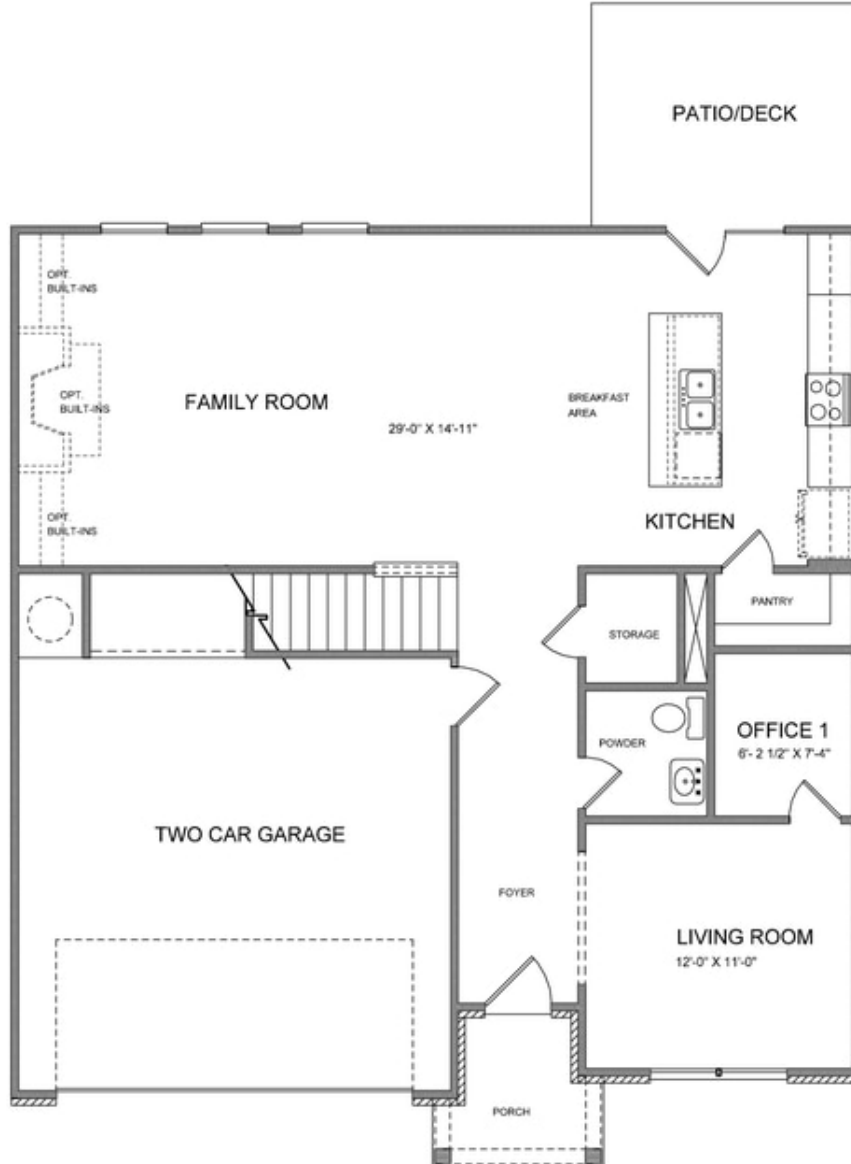
 2 Car Garage

 2.0 Story

Wesley A (Lot 223) - Sought after Model-layout! Hurry to be able to select your design selections. Spacious two-story design with open main level layout featuring Gourmet Kitchen with Island overlooking Dining & Family Room with cozy fireplace as well as Guest en-suite on Main. Owner's Suite with Spa-like Bath & Over Size Walk-In Closet upstairs. Three additional light filled Bedrooms with shared bath & Laundry on Upper as well. Private backyard. Expected completion: Fall 2022 Sought after Denmark High School Cluster! Fantastic gated community with 13 Acre Central Park with Walking Trail, Clubhouse, Pool, Tennis, Playgrounds and HOA Maintained Lawns. Best of all, this well-situated location means you can take advantage of low Forsyth taxes while enjoying a fantastic Alpharetta lifestyle! Less than two miles to the New Halcyon! and 4 miles from Alpharetta's thriving Downtown or the beckoning streets of Avalon. \$5,000 closing costs with use of Green Brick Mortgage for buyer's financing. 1-2-8 year Builder Warranty.

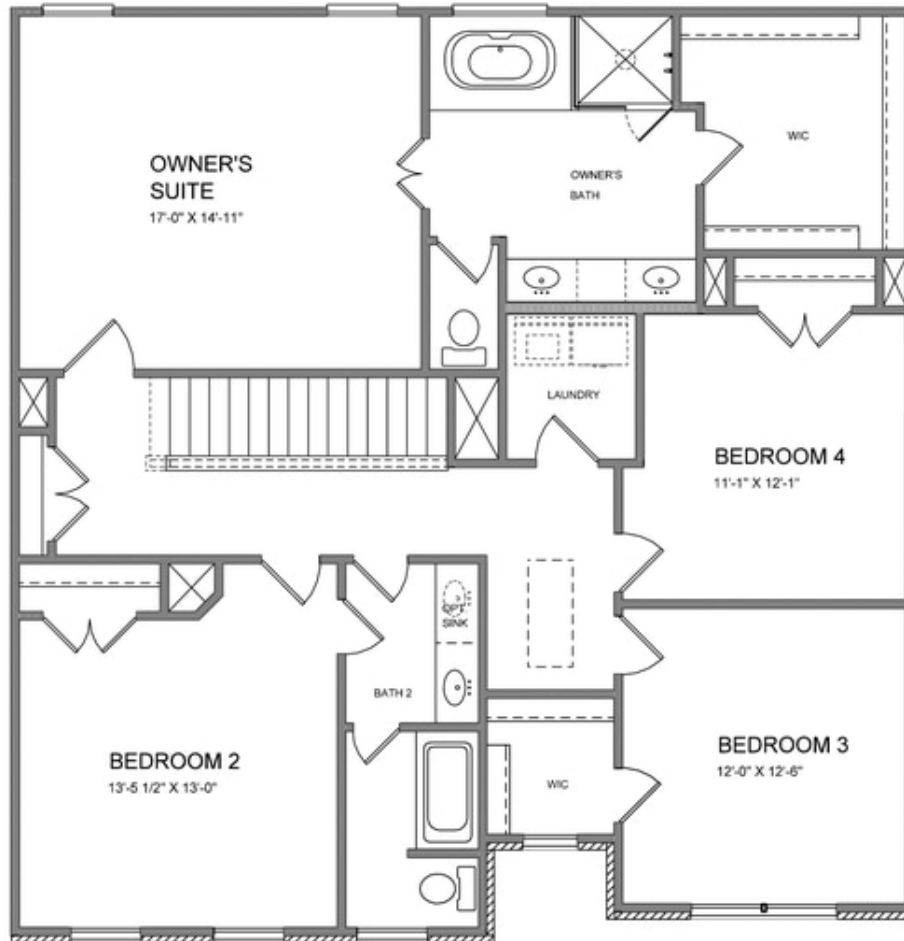
**Want to Know More
About This Home?**

CONTACT OUR COMMUNITY SALES MANAGER
Call Us @ (770) 521-2151



**Want to Know More
About This Home?**

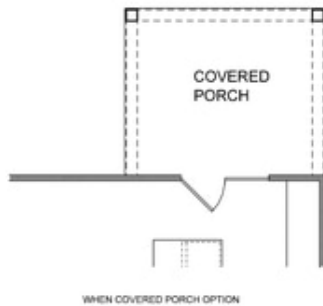
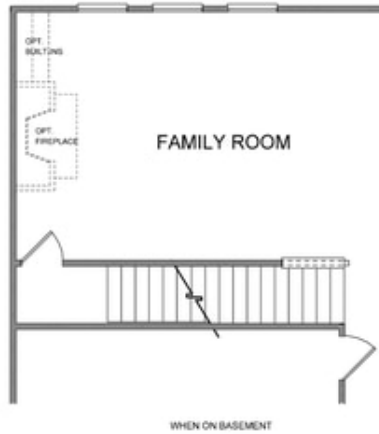
CONTACT OUR COMMUNITY SALES MANAGER
Call Us @ (770) 521-2151



**Want to Know More
About This Home?**

CONTACT OUR COMMUNITY SALES MANAGER
Call Us @ (770) 521-2151

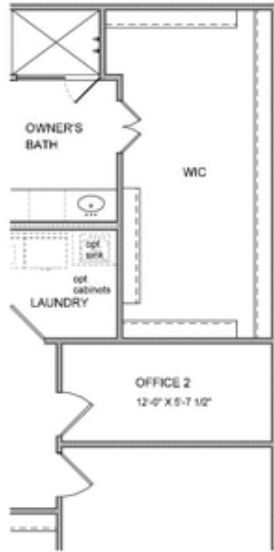
1st Floor Options



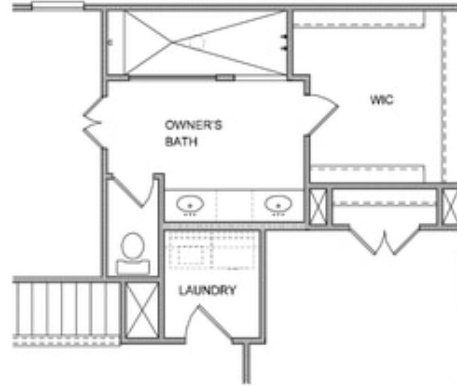
**Want to Know More
About This Home?**

CONTACT OUR COMMUNITY SALES MANAGER
Call Us @ (770) 521-2151

2nd Floor Options



OPT OFFICE 2



OPT WALK-IN SHOWER



OPT BATH 3
* Elevation B ONLY

Want to Know More
About This Home?

CONTACT OUR COMMUNITY SALES MANAGER
Call Us @ (770) 521-2151