



PRICED AT
\$770,000

 2532 Sq Ft

 5 Beds

 3.0 Baths

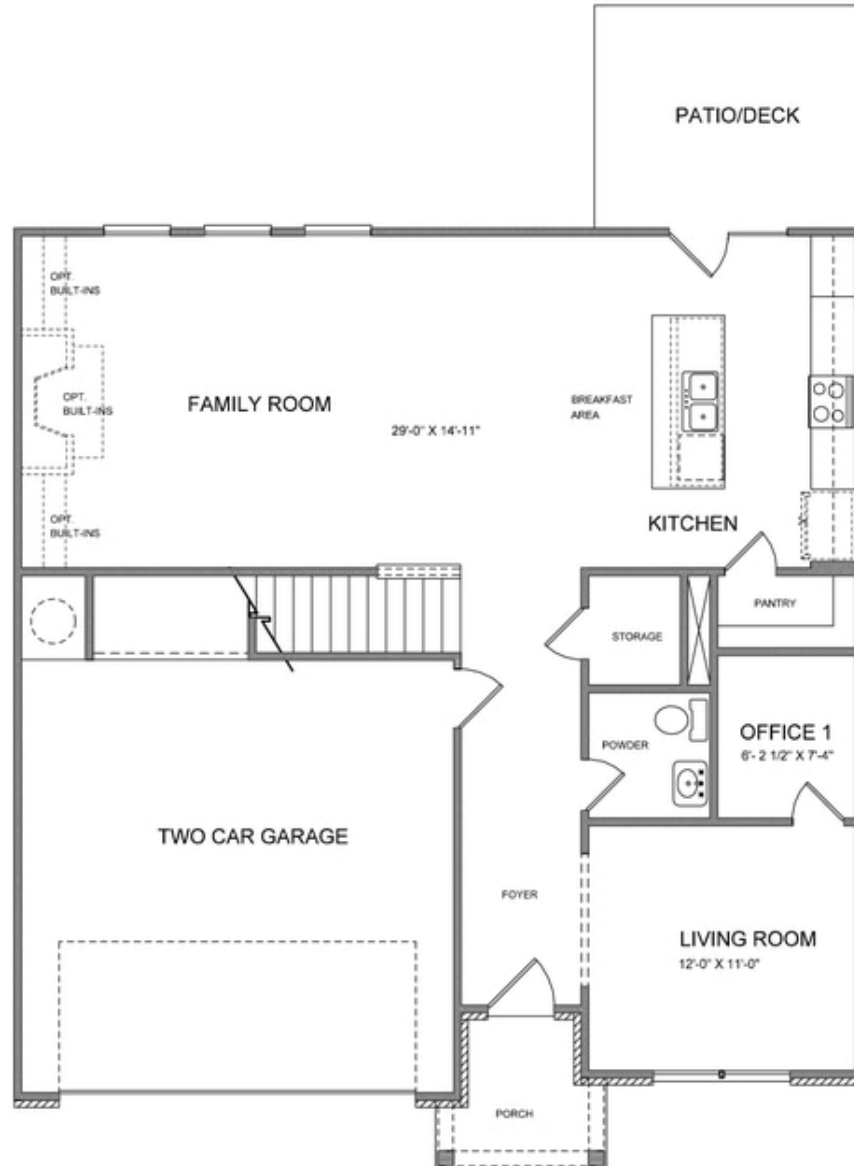
 2 Car Garage

 2.0 Story

THE WAIT IS OVER! Wesley B Model Home is now available for purchase at Central Park at Deerfield! Spacious two-story design with open main level layout featuring Gourmet Kitchen with Island overlooking dining area, walk-in pantry and plenty of cabinets leads to private backyard. Family Room with cozy gas fireplace & floating built in shelves. Guest en-suite on Main with large walk-in closet that can be used as additional office space. Owner's Suite with Spa-like Bath & Over Size Walk-In Closet upstairs featuring shiplap, soaking tub, walk-in shower and double vanities. Three additional light filled Bedrooms with shared bath & Laundry on Upper as well. Private wooded backyard. Move-in: September - October 2022. Sought after Denmark High School Cluster! Fantastic gated community with 13 Acre Central Park with Walking Trail, Clubhouse, Pool, Tennis, Playgrounds and HOA Maintained Lawns. Best of all, this well-situated location means you can take advantage of low Forsyth taxes while enjoying a fantastic Alpharetta lifestyle! Less than two miles to the New Halcyon! and 4 miles from Alpharetta's thriving Downtown or the beckoning streets of Avalon. \$5,000 closing costs with use of Green Brick Mortgage for buyer's financing. 1-2-8 year Builder Warranty. The Providence Group will ...

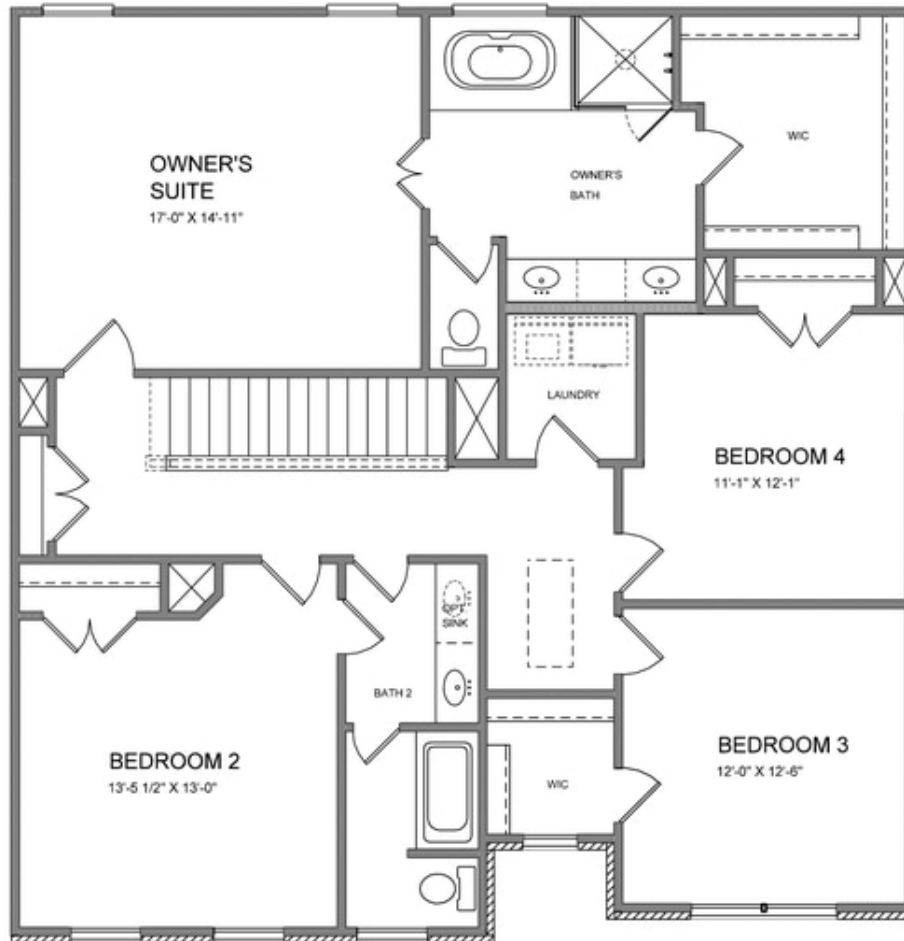
**Want to Know More
About This Home?**

CONTACT OUR COMMUNITY SALES MANAGER
Call Us @ (770) 521-2151



**Want to Know More
About This Home?**

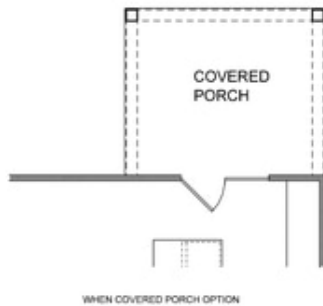
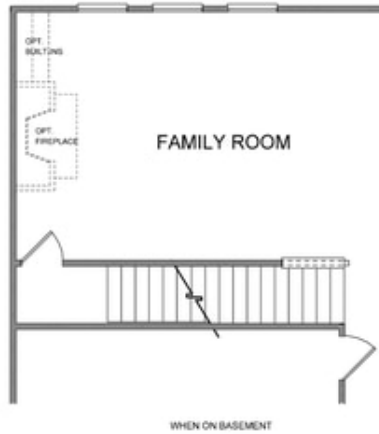
CONTACT OUR COMMUNITY SALES MANAGER
Call Us @ (770) 521-2151



**Want to Know More
About This Home?**

CONTACT OUR COMMUNITY SALES MANAGER
Call Us @ (770) 521-2151

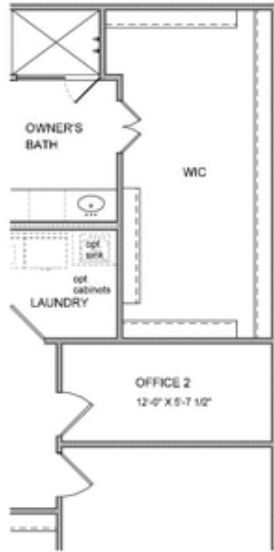
1st Floor Options



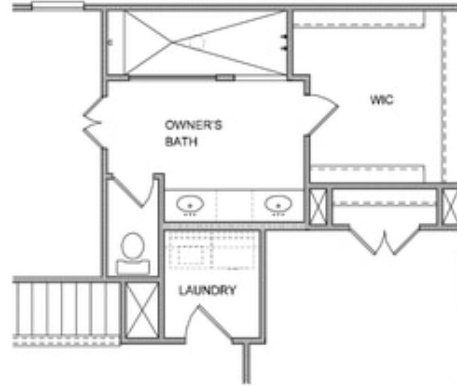
**Want to Know More
About This Home?**

CONTACT OUR COMMUNITY SALES MANAGER
Call Us @ (770) 521-2151

2nd Floor Options



OPT OFFICE 2



OPT WALK-IN SHOWER



OPT BATH 3
 * Elevation B ONLY

**Want to Know More
 About This Home?**

CONTACT OUR COMMUNITY SALES MANAGER
 Call Us @ (770) 521-2151