



PRICED AT
\$799,900

 2852 Sq Ft

 4 Beds

 4.0 Baths

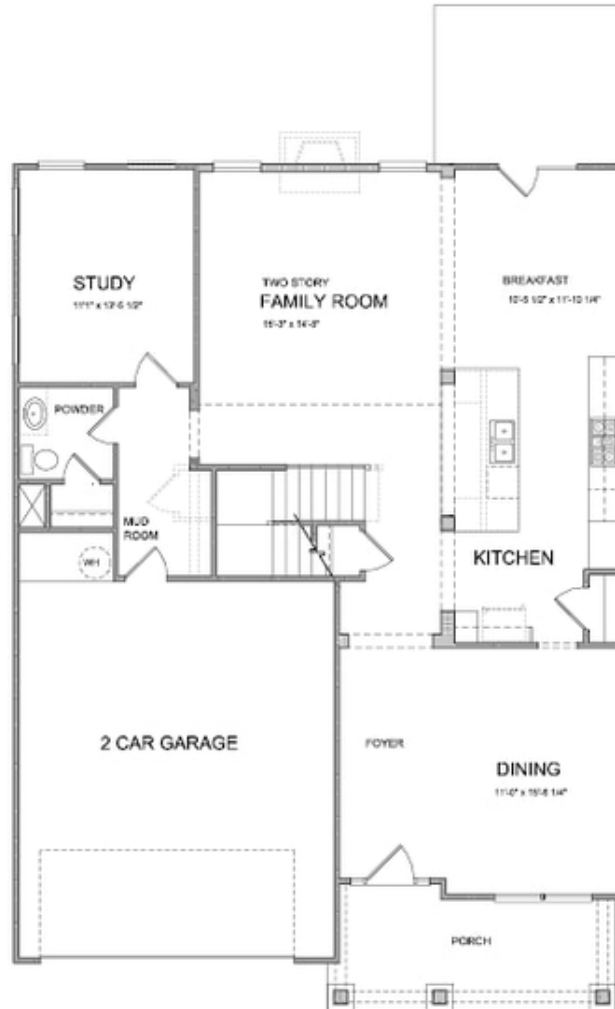
 2 Car Garage

 3.0 Story

4.875% 30-YEAR FIXED LOAN!!! LIMITED FINANCING PROGRAM WITH PREFERRED LENDER ONLY! DON'T MISS INSTANT EQUITY WHEN PURCHASING THIS VERY LAST BRAND NEW CONSTRUCTION HOME @ CENTRAL PARK AT DEERFIELD! Homesite 202 featuring sought after CALHOUN FLOOR PLAN with private Back Yard, Covered Extended Patio; Open Living concept includes 2-Story Family Room with Gas Fireplace & white painted brick surround. Two-tone Chef's Kitchen with oversize Island, Stainless Steel Farm Sink, Stainless Steel Appliances, Quartz counters & separate Breakfast Area. Bedroom en-suite on Main featuring walk-in shower is great for extended guest stays or work from home Office. Formal Dining room leading into the Kitchen, Gleaming floors throughout the main level, hallway and stairs. Spacious Owner's Suite with His & Her walk-in closets, Spa-like Bath featuring soaking tub & Walk-in shower, Plus two additional Bedrooms and two Bathrooms + Loft finishes the Second Floor. Spacious .12 acre private level back yard. HOA dues include Lawn maintenance (front and back yard), Trash/Recycle pick-up as well as ALL AMAZING COMMUNITY AMENITIES: Gated neighborhood with 13 Acre Park w/Walking Trail, Clubhouse, Pool, Tennis, Playground. Best of all, this location has low Forsyth taxes while enjoying Alpharetta lifestyle! The Providence Group partners with several Preferred Lenders ...

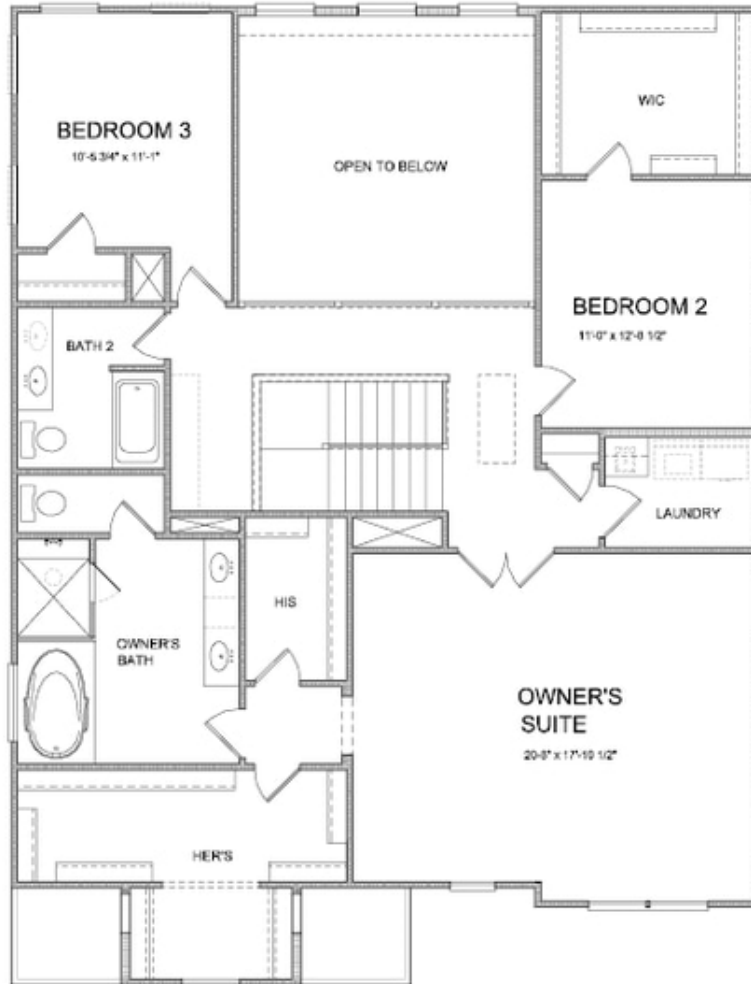
**Want to Know More
About This Home?**

CONTACT OUR COMMUNITY SALES MANAGER
Call Us @ (770) 521-2151



**Want to Know More
About This Home?**

CONTACT OUR COMMUNITY SALES MANAGER
Call Us @ (770) 521-2151



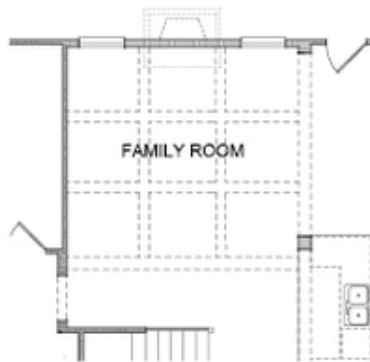
**Want to Know More
About This Home?**

CONTACT OUR COMMUNITY SALES MANAGER
Call Us @ (770) 521-2151



**Want to Know More
About This Home?**

CONTACT OUR COMMUNITY SALES MANAGER
Call Us @ (770) 521-2151



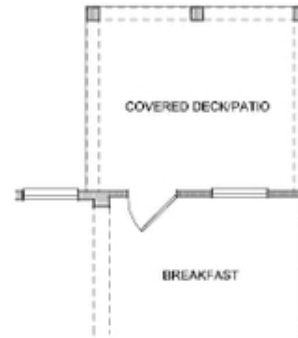
*Opt. Coffered Ceilings
 w/ Opt. Media Room or Bedroom 5 above*



*Opt. Bedroom 4 w/ Full Bath
 as Study & Power Room*



Opt. Sunroom



Opt. Covered Deck/Patio

**Want to Know More
 About This Home?**

CONTACT OUR COMMUNITY SALES MANAGER
 Call Us @ (770) 521-2151



Opt. Full Bath 3
 on Bedroom 2



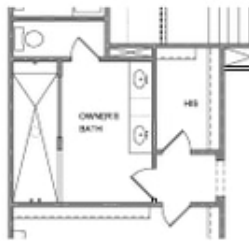
Opt. In-Law Suite on
 Bedroom 3



Opt. Bedroom 5
 w/ Open Ceiling on Family Room



Opt. Bedroom 5 w/ Full Bath
 w/ Open Ceiling on Family Room



Opt. Walk-In Shower



Opt. Media Room
 w/ Open Ceiling on Family Room

**Want to Know More
 About This Home?**

CONTACT OUR COMMUNITY SALES MANAGER
 Call Us @ (770) 521-2151