



PRICED AT  
**\$799,900**

 2852 Sq Ft

 4 Beds

 4.0 Baths

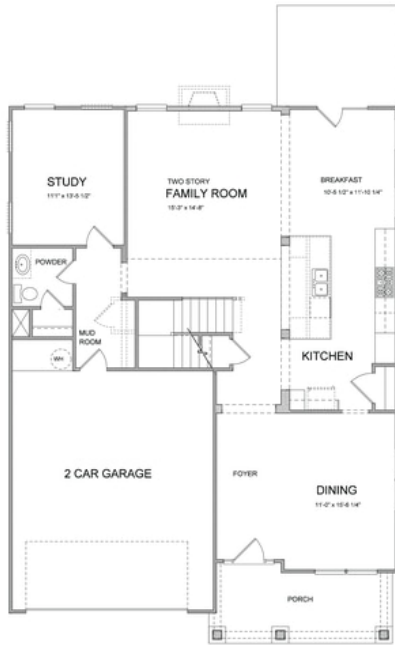
 2 Car Garage

 3.0 Story

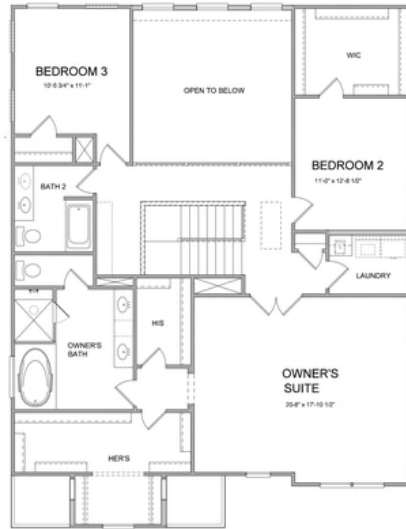
**4.875% 30-YEAR FIXED LOAN!!! LIMITED FINANCING PROGRAM WITH PREFERRED LENDER ONLY! DON'T MISS INSTANT EQUITY WHEN PURCHASING THIS VERY LAST BRAND NEW CONSTRUCTION HOME @ CENTRAL PARK AT DEERFIELD! Homesite 202 featuring sought after CALHOUN FLOOR PLAN with private Back Yard, Covered Extended Patio; Open Living concept includes 2-Story Family Room with Gas Fireplace & white painted brick surround. Two-tone Chef's Kitchen with oversize Island, Stainless Steel Farm Sink, Stainless Steel Appliances, Quartz counters & separate Breakfast Area. Bedroom en-suite on Main featuring walk-in shower is great for extended guest stays or work from home Office. Formal Dining room leading into the Kitchen, Gleaming floors throughout the main level, hallway and stairs. Spacious Owner's Suite with His & Her walk-in closets, Spa-like Bath featuring soaking tub & Walk-in shower, Plus two additional Bedrooms and two Bathrooms + Loft finishes the Second Floor. Spacious .12 acre private level back yard. HOA dues include Lawn maintenance (front and back yard), Trash/Recycle pick-up as well as ALL AMAZING COMMUNITY AMENITIES: Gated neighborhood with 13 Acre Park w/Walking Trail, Clubhouse, Pool, Tennis, Playground. Best of all, this location has low Forsyth taxes while enjoying Alpharetta lifestyle! The Providence Group partners with several Preferred Lenders ...**

**Want to Know More  
About This Home?**

CONTACT OUR NEW HOME NAVIGATOR  
Call Us @ (770) 521-2151



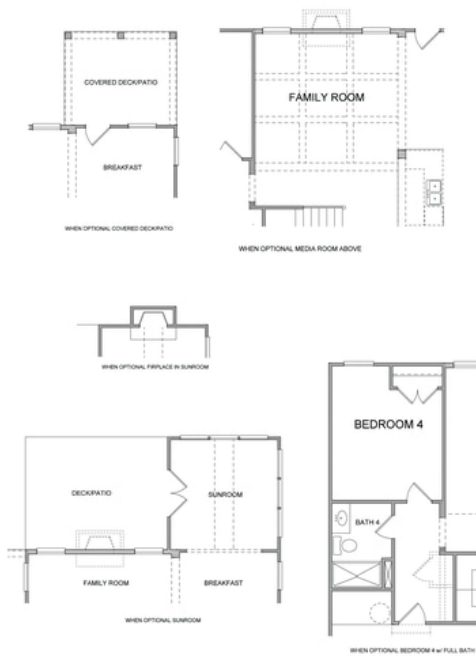
**First Floor**



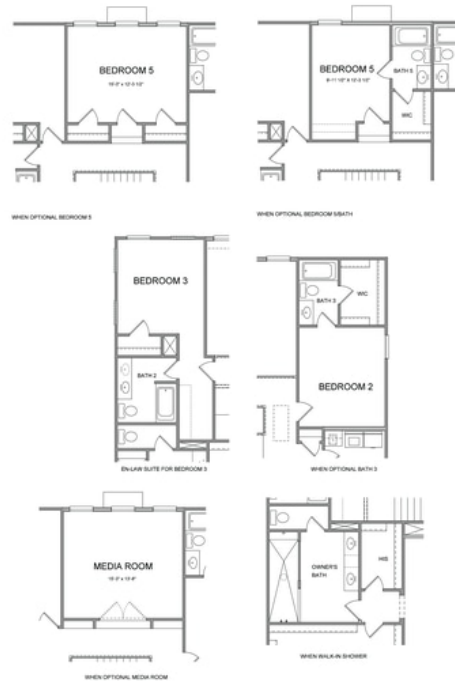
**Second Floor**

**Want to Know More  
About This Home?**

CONTACT OUR NEW HOME NAVIGATOR  
Call Us @ (770) 521-2151



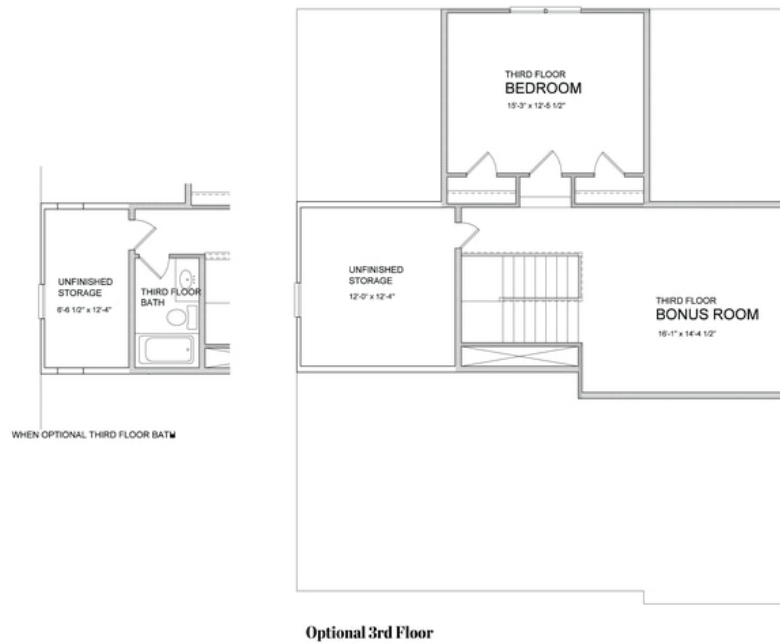
**First Floor Options**



**Second Floor Options**

**Want to Know More  
 About This Home?**

CONTACT OUR NEW HOME NAVIGATOR  
 Call Us @ (770) 521-2151



**Want to Know More  
About This Home?**

CONTACT OUR NEW HOME NAVIGATOR  
Call Us @ (770) 521-2151