



PRICED AT  
**\$684,940**

 **3472 Sq Ft**

 **5 Beds**

 **4.0 Baths**

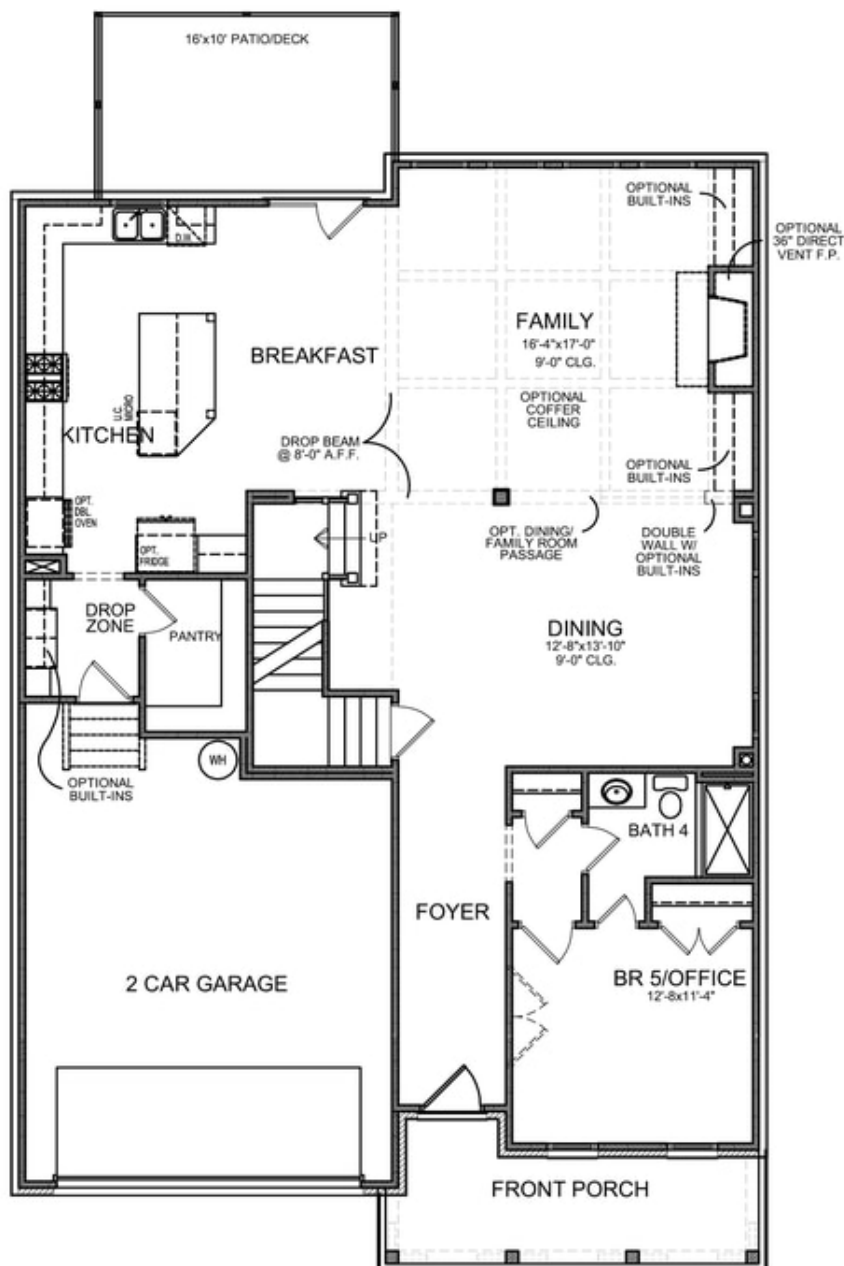
 **2 Car Garage**

 **3.0 Story**

**Montgomery E (Home Site 205) - PRESALE BASEMENT HOME by The Providence Group. Sought after layout with light filled Chef's Kitchen that opens to Family room with cozy Fireplace and formal Dining. Guest/Office en-suite on Main. Spacious Master w/Spa-like Bath with walk-in Shower, Soaking Tub & divided Walk-in closet. Oversized Guest Bed w/en-suite & two more Beds w/jack & jill bath upstairs all w/WIC. Large unfinished basement for future expansion space. \$5,000 closing costs with preferred lender. HOA Maintained Lawns and trash. 1-2-10 year Warranty. New Denmark High School Cluster!! Gated nhood w/13 Acre Park w/Walking Trail, Clubhouse, Pool, Tennis, Playground & HOA Maintained Lawns. Best of all, this location has low Forsyth taxes while still in Alpharetta!**

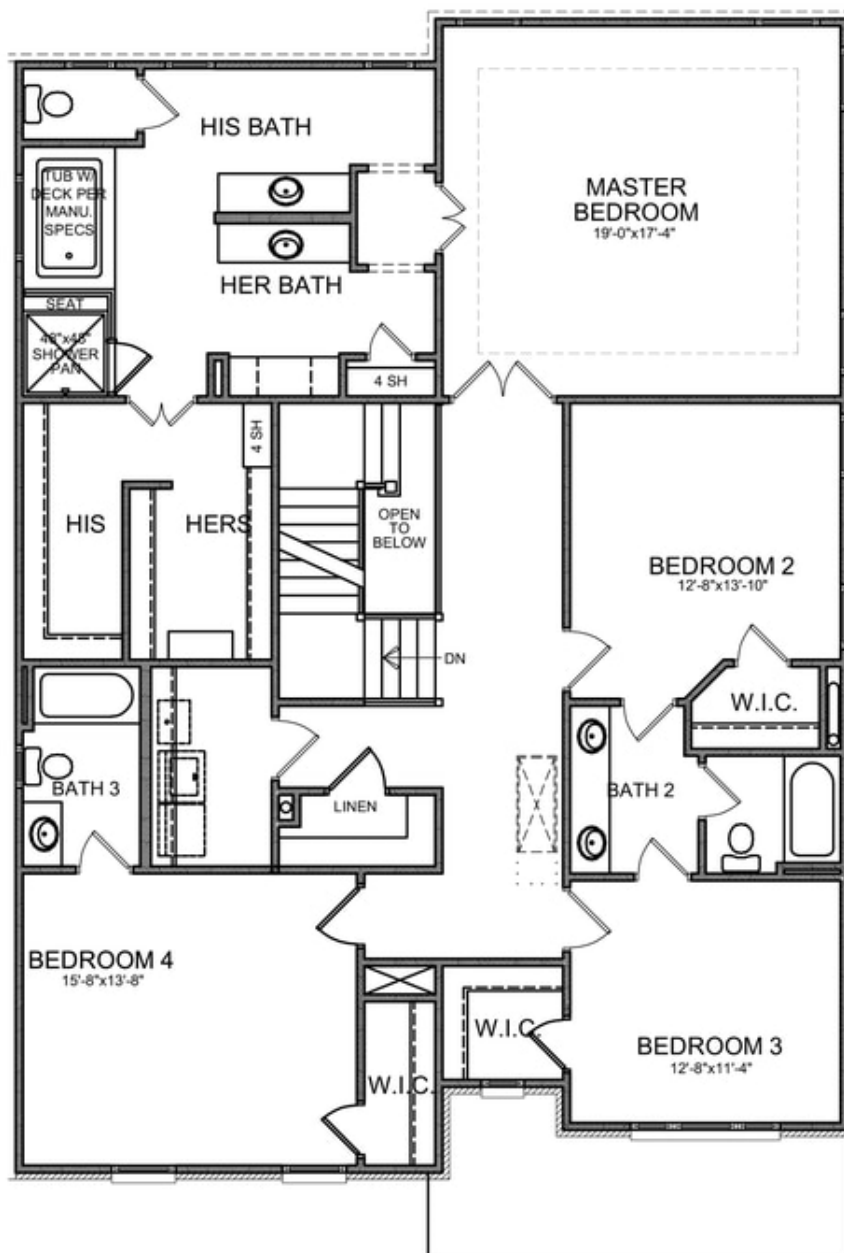
**Want to Know More  
About This Home?**

CONTACT OUR NEW HOME NAVIGATOR  
Call Us @ (770) 521-2151



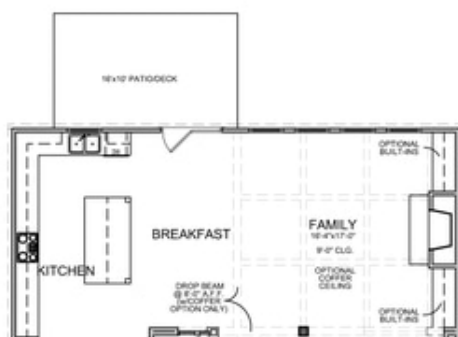
Want to Know More  
About This Home?

CONTACT OUR NEW HOME NAVIGATOR  
Call Us @ (770) 521-2151



**Want to Know More  
About This Home?**

**CONTACT OUR NEW HOME NAVIGATOR**  
**Call Us @ (770) 521-2151**



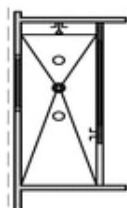
OPT Extended Kitchen



OPT Extended Porch & Awning



OPT Covered Porch



OPT Owner's Walk-In Shower

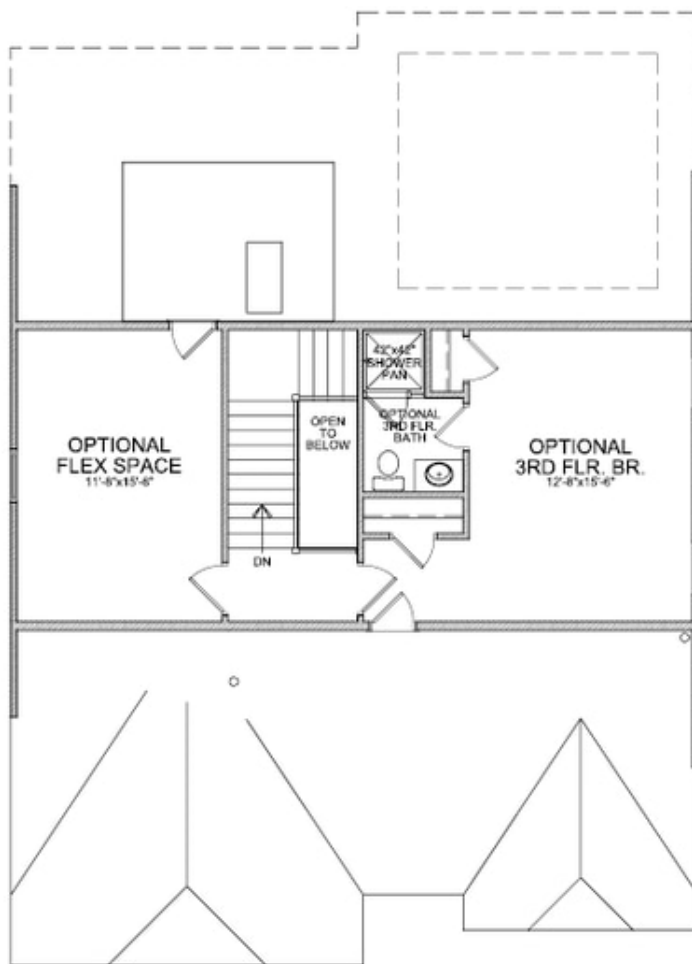


OPT Sunroom -&- OPT Patio/Deck

OPT Fireplace on Sunroom

Want to Know More  
About This Home?

CONTACT OUR NEW HOME NAVIGATOR  
Call Us @ (770) 521-2151



OPT Third Floor

\*Third Floor NOT available on Elevations B & E

**Want to Know More  
About This Home?**

CONTACT OUR NEW HOME NAVIGATOR  
Call Us @ (770) 521-2151