



PRICED AT
\$641,180

 2734 Sq Ft

 5 Beds

 4.0 Baths

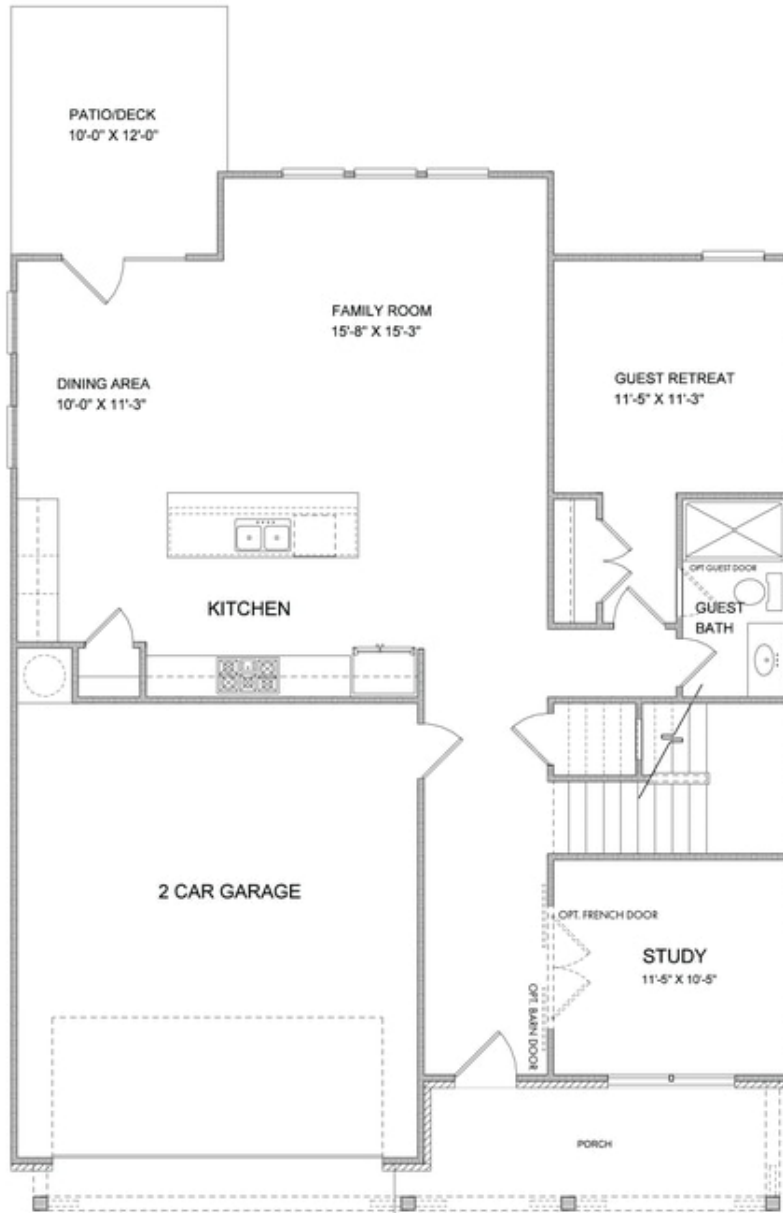
 2 Car Garage

 2.0 Story

Bennett C (Home Site 207) - PRESALE BASEMENT HOME by The Providence Group. Open living space with addtl Study perfect for home office on main along with Guest En-Suite. Kitchen to feature tons of cabinets with large island & view to Family & Dining. Large Owner's Suite with Spa-like Bath, 2 more beds on second floor share bath & third bed has private En-Suite. Large unfinished basement for future expansion space. \$5,000 closing costs with preferred lender. HOA Maintained Lawns and trash. 1-2-10 year Warranty. New Denmark High School Cluster!! Gated nhood w/13 Acre Park w/Walking Trail, Clubhouse, Pool, Tennis, Playground & HOA Maintained Lawns. Best of all, this location has low Forsyth taxes while still in Alpharetta!

**Want to Know More
About This Home?**

CONTACT OUR COMMUNITY SALES MANAGER
Call Us @ (770) 521-2151



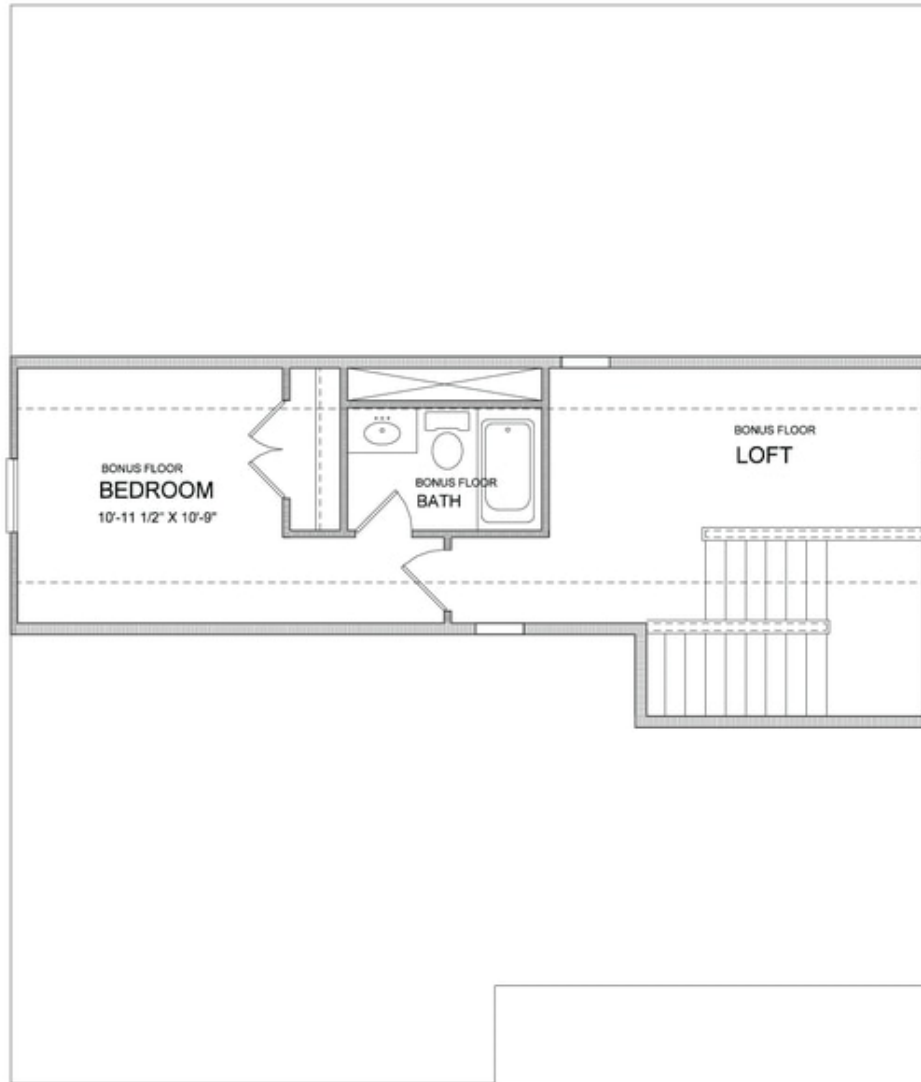
**Want to Know More
About This Home?**

CONTACT OUR COMMUNITY SALES MANAGER
Call Us @ (770) 521-2151



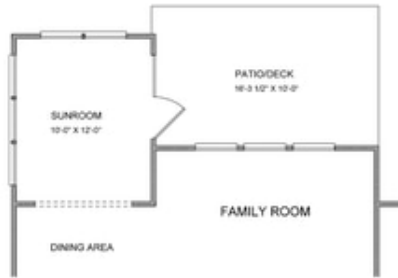
**Want to Know More
About This Home?**

CONTACT OUR COMMUNITY SALES MANAGER
Call Us @ (770) 521-2151

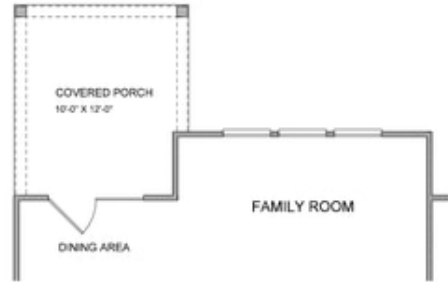


**Want to Know More
About This Home?**

CONTACT OUR COMMUNITY SALES MANAGER
Call Us @ (770) 521-2151



Opt. Sunroom



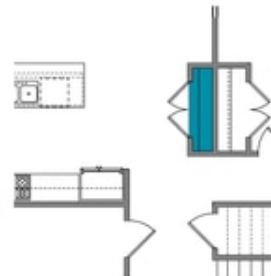
Opt. Covered Porch



Opt. Fireplace



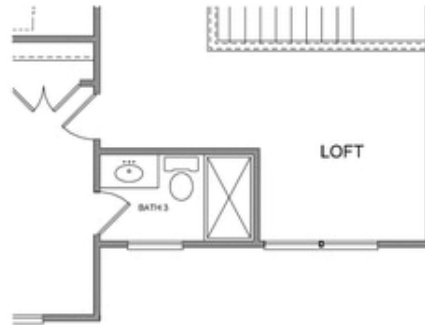
Opt. Rear Fireplace



Opt. Pantry

Want to Know More
About This Home?

CONTACT OUR COMMUNITY SALES MANAGER
Call Us @ (770) 521-2151



Opt. 3rd Bath



Opt. Owner's Sitting Room



Opt. Owner's Walk-in Shower

Want to Know More
About This Home?

CONTACT OUR COMMUNITY SALES MANAGER
Call Us @ (770) 521-2151