



PRICED AT
\$672,145

 2734 Sq Ft

 5 Beds

 3.0 Baths

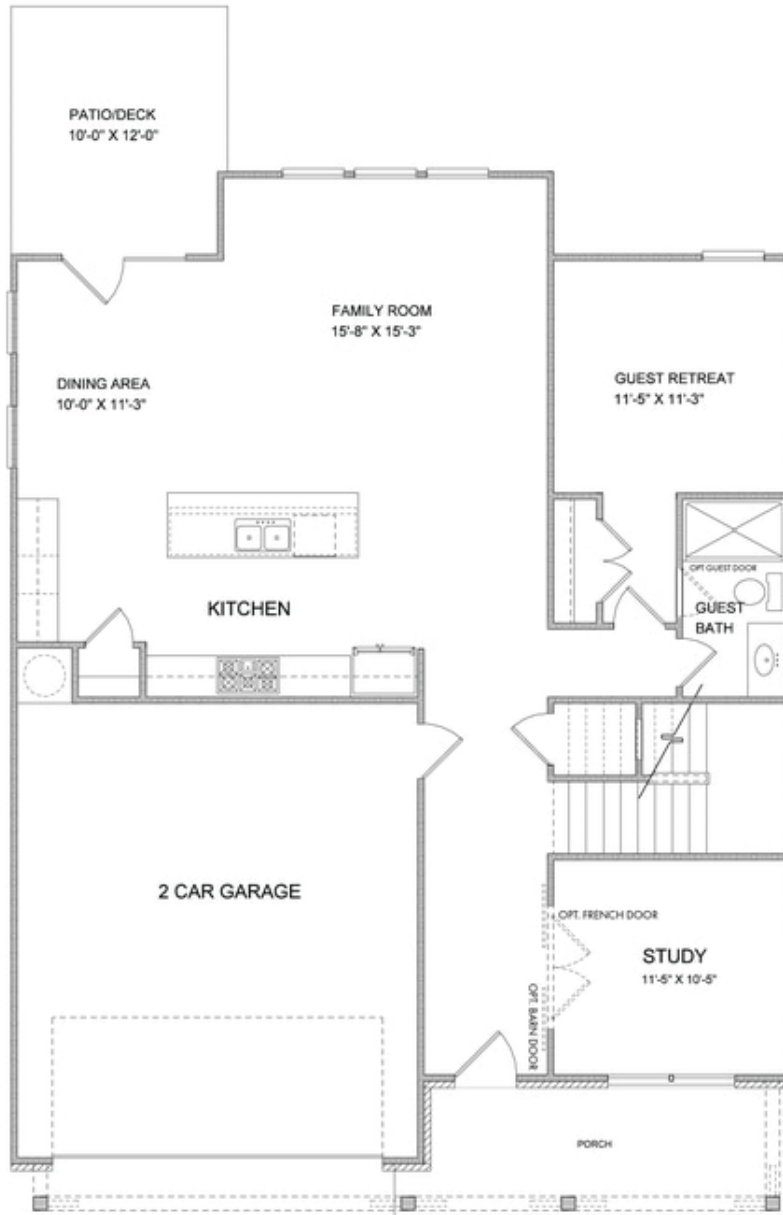
 2 Car Garage

 2.0 Story

Bennett A (Home Site 209) - PRESALE BASEMENT HOME by The Providence Group. **OTHER FLOORPLANS ALSO AVAILABLE!** Large unfinished basement for future expansion space. Just 4 miles from Alpharetta's thriving Downtown or the beckoning streets of Avalon. Less than 2 miles to the New Halcyon! Gated neighborhood w/13 Acre Central Park w/Walking Trails, Clubhouse, Pool, Tennis, Playgrounds & HOA Maintained Lawns. Top-Notch Forsyth Co Schools. Best of all, this well-situated location means you can take advantage of low Forsyth taxes while enjoying a fantastic Alpharetta lifestyle! \$5,000 closing costs with preferred lender. HOA Maintained Lawns and trash. 1-2-10 year Warranty. New Denmark High School Cluster!!

**Want to Know More
About This Home?**

CONTACT OUR COMMUNITY SALES MANAGER
Call Us @ (770) 521-2151



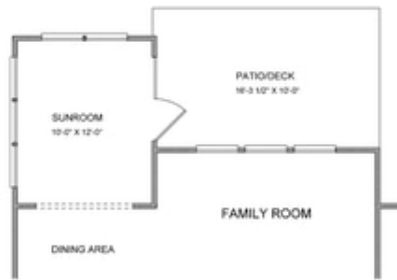
**Want to Know More
About This Home?**

CONTACT OUR COMMUNITY SALES MANAGER
Call Us @ (770) 521-2151

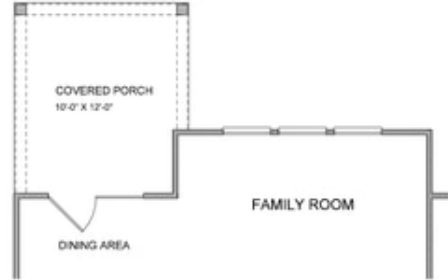


**Want to Know More
About This Home?**

CONTACT OUR COMMUNITY SALES MANAGER
Call Us @ (770) 521-2151



Opt. Sunroom



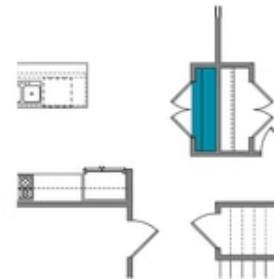
Opt. Covered Porch



Opt. Fireplace



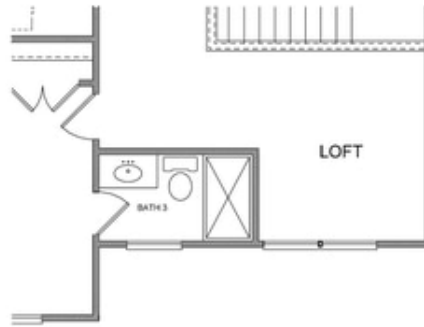
Opt. Rear Fireplace



Opt. Pantry

**Want to Know More
About This Home?**

CONTACT OUR COMMUNITY SALES MANAGER
Call Us @ (770) 521-2151



Opt. 3rd Bath



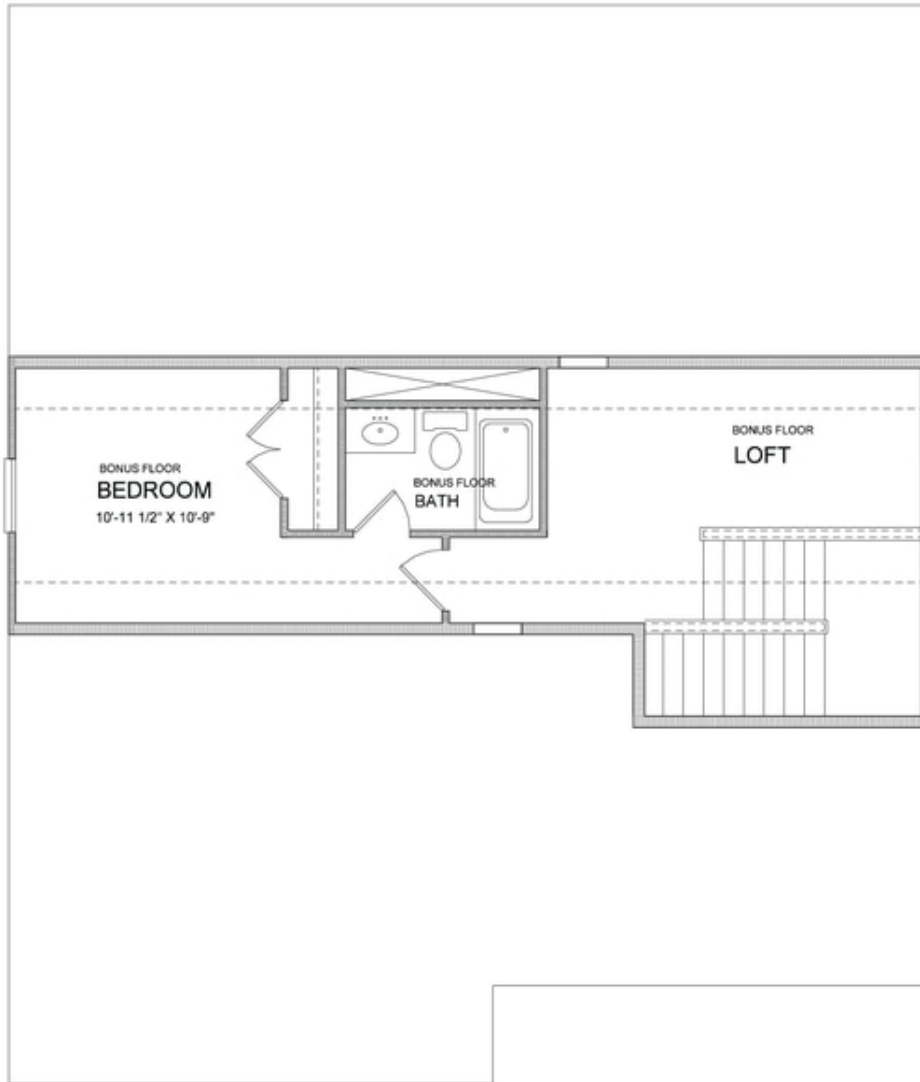
Opt. Owner's Sitting Room



Opt. Owner's Walk-in Shower

Want to Know More
About This Home?

CONTACT OUR COMMUNITY SALES MANAGER
Call Us @ (770) 521-2151



**Want to Know More
About This Home?**

CONTACT OUR COMMUNITY SALES MANAGER
Call Us @ (770) 521-2151