



PRICED FROM
\$602,900

 2,734 - 3,333 Sq Ft

 5 - 6 Beds

 3 - 5 Baths

 2 Car Garage

- Gourmet Kitchen with Island overlooking Dining and Family Room
- Owner's Suite and Private Bath with Dual Vanities and Over Sized Walk-In Closet on Upper Level
- Secondary Bedrooms and Laundry on Upper Level
- Two Car Garage

[Read More Online](#)

Available Elevations



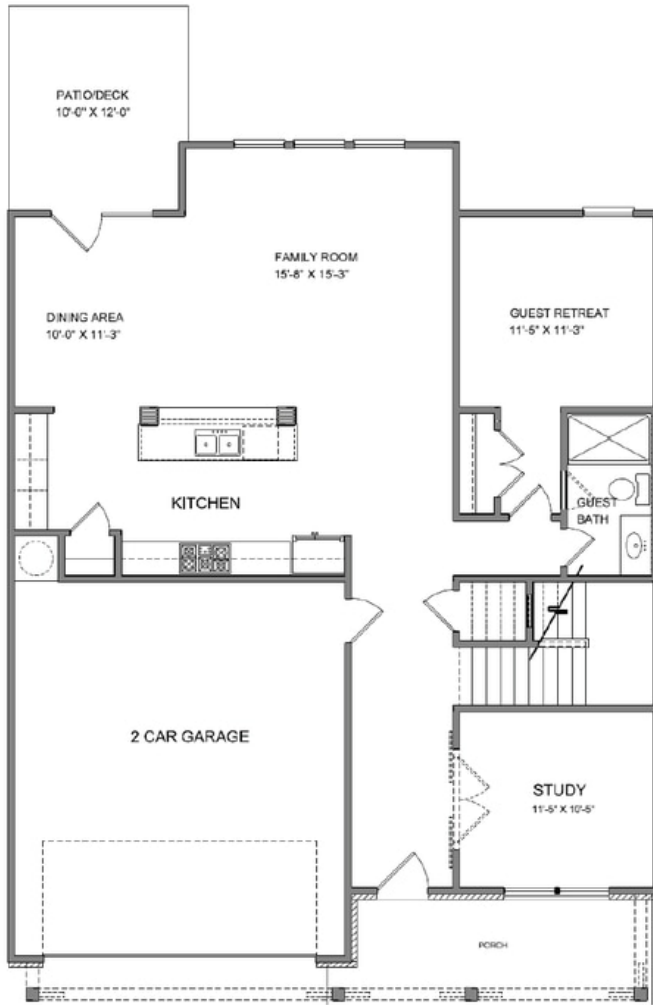
Elevation A



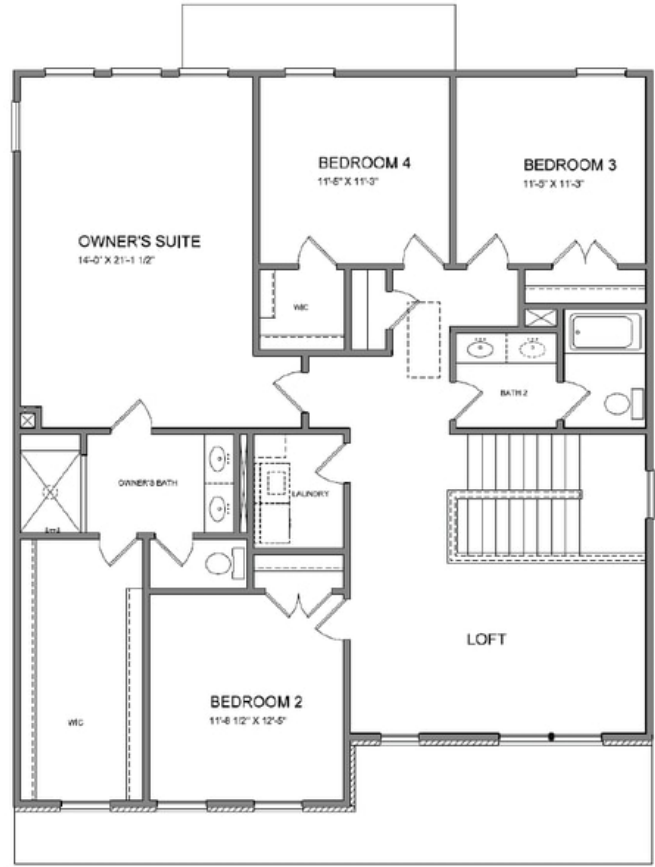
Elevation B



Elevation C



First Floor



Second Floor

**Want to Know More
 About This Home?**

CONTACT OUR NEW HOME NAVIGATOR
 Call Us @ (770) 521-2151